

PRODUCT DATASHEET

HCI-TC 70 W/930 WDL PB Shoplight

POWERBALL HCI-TC Shoplight | Metal halide lamps with ceramic technology for enclosed luminaires



AREAS OF APPLICATION

- Shop interiors, shop windows
- Museums, exhibitions
- Accent lighting
- Decorative lighting
- Approved only for use in enclosed luminaires
- Outdoor applications only in suitable luminaires

PRODUCT BENEFITS

- Excellent color rendering
- Excellent rendering of red tones
- Very good color stability
- High efficiency
- UV values significantly below the maximum permitted thresholds to IEC 61167 thanks to UV filter

PRODUCT FEATURES

- POWERBALL ceramic technology
- Light color: warm white (930 WDL)
- Average lifetime: 15,000 h (operation with ECG with 70...400 Hz square-wave current)
- Average lifetime: 12,000 h (with magnetic control gear)
- Color rendering index $R_a \geq 93$



TECHNICAL DATA

Electrical data

| | |
|-------------------------------|-----------------------------|
| Nominal wattage | 70.00 W |
| Rated wattage | 73.00 W |
| Lamp current | 0.97 A |
| PFC capacitor at 50 Hz | 12 µF ¹⁾ |
| Ignition voltage | 3.6 / 5.0 kVp ²⁾ |

¹⁾ At rated voltage and $\cos \varphi \geq 0.9$

²⁾ Minimum; for superimposed ignition with square wave electronic ballast 3.0 kVp are sufficient / Maximum; this limit is for safety reasons

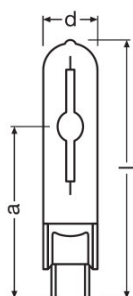
Photometrical data

| | |
|---------------------------------|-----------------------|
| Luminous flux | 6800 lm ¹⁾ |
| Luminous efficacy | 93 lm/W ²⁾ |
| Color rendering index Ra | 94 |
| Color temperature | 3000 K |
| Light color | 2900 |
| Rated LLMF at 2,000 h | 0.82 |
| Rated LLMF at 4,000 h | 0.79 |
| Rated LLMF at 6,000 h | 0.78 |
| Rated LLMF at 8,000 h | 0.74 |
| Rated LLMF at 12,000 h | 0.60 |
| UV protection | Yes |
| Color temperature | 2920 K |

¹⁾ In operation with electronic control gear with 70...400 Hz square-wave current. Operation with magnetic ballast can be less efficient

²⁾ In operation with low frequency square wave electronic ballast, 70...400 Hz. Operation with electromagnetic ballast may be less efficient.

Dimensions & weight



| | |
|----------------------------------|---------|
| Diameter | 15.0 mm |
| Length | 81.0 mm |
| Light center length (LCL) | 52.0 mm |

| | |
|-----------------------|--------|
| Product weight | 9.00 g |
|-----------------------|--------|

Temperatures & operating conditions

| | |
|---|--------|
| Maximum permitted outer bulb temperature | 550 °C |
| Maximum permitted pinch temperature | 350 °C |

Lifespan

| | |
|---|-----------------------|
| Rated lamp survival factor at 2,000 h | 0.99 |
| Rated lamp survival factor at 4,000 h | 0.98 |
| Rated lamp survival factor at 6,000 h | 0.97 |
| Rated lamp survival factor at 8,000 h | 0.96 |
| Rated lamp survival factor at 12,000 h | 0.80 |
| Lifespan B50 | 15000 h ¹⁾ |
| Operation mode LLMF/LSF | ECG |

¹⁾ At ECG

Additional product data

| | |
|------------------------------------|----------------------|
| Base (standard designation) | G8.5 |
| System guarantee level | 3 (2/5) |
| Mercury content | 8.3 mg ¹⁾ |

¹⁾ Maximum

Capabilities

| | |
|------------------------------------|-------------------|
| Dimmable | Yes ¹⁾ |
| Burning position | Any |
| Enclosed luminaire required | Yes |

¹⁾ In combination with POWERTRONIC PTo

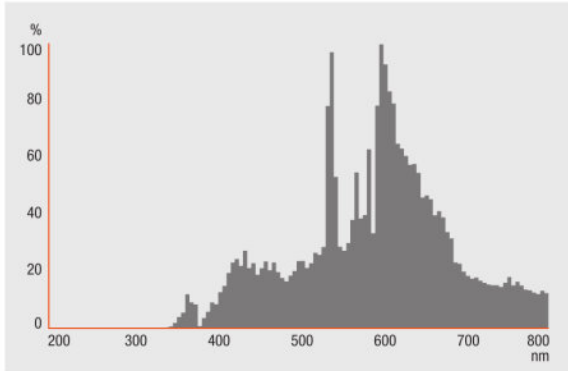
Certificates & standards

| | |
|--------------------------------|--------------|
| Energy efficiency class | A+ |
| Energy efficiency class | A+ |
| Energy consumption | 81 kWh/1000h |

Country-specific categorizations

| | |
|--------------|------------------------------|
| ILCOS | MT/UB-70/930-H/SL-G8.5-17/85 |
|--------------|------------------------------|

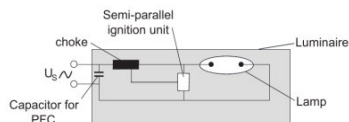
Light Distribution



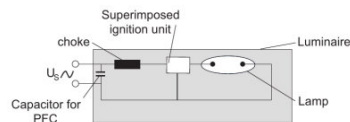
Spectral power distribution

SYSTEM GUARANTEE

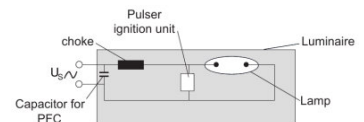
- When operated with OSRAM POWERTRONIC control gear, an extended system guarantee is granted for these lamps



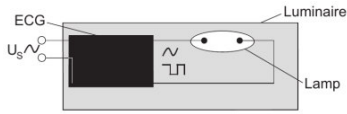
Circuit diagram



Circuit diagram



Circuit diagram



Circuit diagram

LOGISTICAL DATA

| Product code | Product description | Packaging unit (Pieces/Unit) | Dimensions (length x width x height) | Volume | Gross weight |
|---------------|-------------------------------------|------------------------------|--------------------------------------|----------------------|--------------|
| 4008321681812 | HCI-TC 70 W/930 WDL PB Shoplight | Shipping carton box 12 | 180 mm x 127 mm x 140 mm | 3.20 dm ³ | 363.00 g |

The mentioned product code describes the smallest quantity unit which can be ordered. One shipping unit can contain one or more single products. When placing an order, for the quantity please enter single or multiples of a shipping unit.

REFERENCES / LINKS

For more information on the system guarantee and the terms and conditions of the guarantee visit
 ▶ www.ledvance.com/system-guarantee

DISCLAIMER

Subject to change without notice. Errors and omission excepted. Always make sure to use the most recent release.