



product details

**QTi DALI 2x28/54 DIM**

Product description: QTi DALI 2x28/54 DIM  
 Product code: 4050300870502  
 Quantity: Unpacked (UNV) contains 1 Piece (PCE)

You can find this product in the eCatalog:

[http://catalog.myosram.com?~language=EN&~country=COM&it\\_p=4050300870502](http://catalog.myosram.com?~language=EN&~country=COM&it_p=4050300870502)

Applications	
Control	By DALI or Touch DIM/Touch DIM Sensor
Suitable f. fixtures with prot. class	Class I
Dimming interface	DALI   Touch DIM   Touch DIM Sensor
Dimming range	1...100 % <sup>1)</sup>
Dimmable	Yes
Overload protection	Yes
Overtemperature protection	Yes

Categorizations	
SEG number	7980269

Certificates & Standards	
Approval marks - approval	VDE   ENEC 10   VDE-EMC
EEL - Energy Label	A1 BAT
Standards	acc. to EN 61347-2-3   acc. to EN 60929   acc. to EN 55015:2006 + A1:2007   acc. to EN 61000-3-2   acc. to EN 61547
Type of protection	IP20

General Description	
Design / version	ECG DALI

Logistical Data	
Product weight	370 g
Relative humidity	5...85 % <sup>2)</sup>
Temperature range at storage	-40...85 °C

Technical - Electrical Data	
Inrush current	45 A
Nominal wattage + Power loss	0
Nominal voltage	220-240 V
Mains frequency	50...60 Hz
DC voltage	154...276 V
Operating frequency	44...120 kHz
Max. no. of ECGs on circuit breaker 10 A	8
Max. no. of ECGs on circuit breaker 16 A	13
Maximum current at DIM interface	2.0 mA <sup>3)</sup>
TH full width at half maximum	204 µs
Type of current	AC/DC

Technical - Geometries	
Length	423.00 mm
Width	30.00 mm
Height	21.00 mm



21.09.2011

Subject to change without notice. Errors and omission excepted.

© 2011 OSRAM AG

Page 1 of 3



Technical - Geometries	
Mounting hole spacing, length	415 mm
Wire preparation length, input side	8.0...9.0 mm <sup>4)</sup>
Wire preparation length, output side	8.0...9.0 mm <sup>5)</sup>

Technical - Light Technical Data	
Rated starting time	optimized preheat start within 0.6 s

Technical - Temperatures	
Ambient temperature range	+10...+50 °C
Operating temperature	70 °C
Max. housing temperature in case of fault	110 °C

Packaging units				
Product code	Packaging type and content	Dimensions in h x w x l	Gross weight	Volume
4050300870502	Unpacked contains 1 Piece	32,000 mm x 22,000 mm x 433,000 mm	370,000 g (0,000 g)	0,314 Cubic dec.
4050300870519	Shipping carton box contains 20 Piece	170,000 mm x 96,000 mm x 435,000 mm	7,642,000 g (0,000 g)	7,099 Cubic dec.

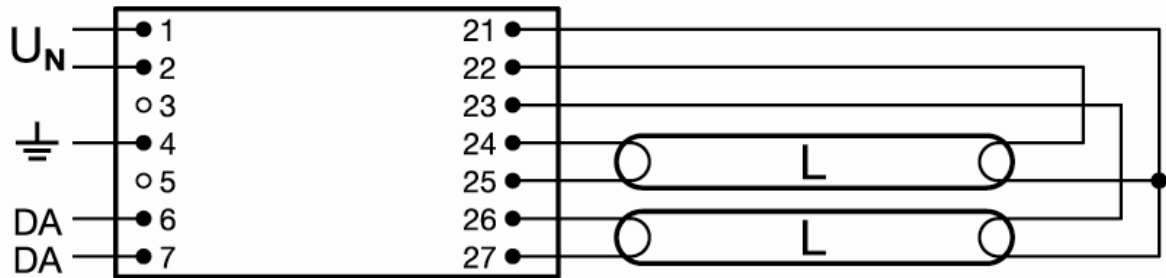
#### General

- Supply voltage: 220 - 240 V
- Line frequency: 0, 50 - 60 Hz
- Line voltage: 198 - 264 V
- Suitable for use in emergency lighting systems as per EN 50172/DIN VDE 0108-100
- Configurable emergency power characteristics; light value can be set between 100 % and 1 % luminous flux without a control signal
- Same luminous flux with direct and alternating current
- The battery voltage may drop to 154 V. Ignition must take place above 198 V
- Digitally controlled preheating
- Perfect lamp starting for applications with motion sensors, lamp start within 0.6 s
- Optimum preheating in any dimmer setting
  - Dimming range: 1 to 100 % luminous flux
  - Dimming of amalgam lamps without flickering or reduced lifespan of lamps and ECG in the full dimming range from 1 to 100 %
  - Very high energy efficiency thanks to cut-off technology (cut-off above 80 % luminous flux) and very low connected load at rated luminous flux
  - Life of 100,000 hours and more
  - Automatic safety shutdown of lamps in the event of a defect or at end of life (EoL T.2)
  - Automatic restart of replacement lamps
  - Suitable for luminaires of protection class I
  - Effective overtemperature protection of the dimmable ECG thanks to intelligent thermal management at high  $t_c$  temperatures
  - Very low standby consumption:
- QTi DALI 1x, 2x: 0.2 W - Luminaires with up to 2 ECGs comply with the Minergie standard.
- QTi DALI 3x, 4x: < 0.5 W - Luminaire with one ECG complies with the Minergie standard
- <ul><li>Maximum dimming rate for dynamic RGB colored light applications 5 ms from 1 % to 100 % thanks to optimized control of electrode preheating</li></ul>
- <li>Energy Efficiency Index EEI=A1</li>
- <li>Approval marks: ENEC 10 VDE Sign EMV Sign</li>
- <li>Additional features: Cut off Sign EOL Sign</li>
- <li>Safety: to EN 61347-2-3</li>
- <li>Lamp operation: to EN 60929</li>
- <li>RI suppression: to EN 55015:2006+A1:2007/CISPR 15, EN 55022</li>
- <li>Line harmonics: to EN 61000-3-2</li>
- <li>Immunity: to EN 61547</li>
- </li></ul>
- <B>DALI product features</B>
- <ul><li>Control via the DALI interface</li>
- <li>Compliance with the DALI standard to IEC 60929 and IEC 62386</li>
- <li>For all OSRAM ECGs the control input of the DALI interface is protected against overvoltage and polarity reversal</li>
- <li>Touch DIM and Touch DIM Sensor function: Manual dimming (Touch DIM) without any controller and with standard switches, incl. memory function (double click) and soft start</li>
- </li></ul>

- 1) luminous flux
- 2) Maximum 56 days/year at 85 %
- 3) acc. to DALI-Standard
- 4) Combi wiring
- 5) Combi wiring



### Lamp wiring | Lampenverdrahtung



Wires 24, 25 and 26, 27 max. 1m length | Leitungen 24, 25 und 26, 27 max. 1m Länge