

PRODUCT DATASHEET

L 8 W/827

LUMILUX T5 Short | Tubular fluorescent lamps 16 mm, short, with G5 base



AREAS OF APPLICATION

- Shops
- Supermarkets and department stores
- Public buildings

PRODUCT BENEFITS

- Ideal for cost-effective creative illumination and decoration
- Very good luminous flux maintenance throughout the life of the lamp
- Slim and compact

PRODUCT FEATURES

- Good color rendering group: 1B (R_a : 80...89)
- Average lifetime: up to 10,000 h (with QUICKTRONIC ECG)



TECHNICAL DATA

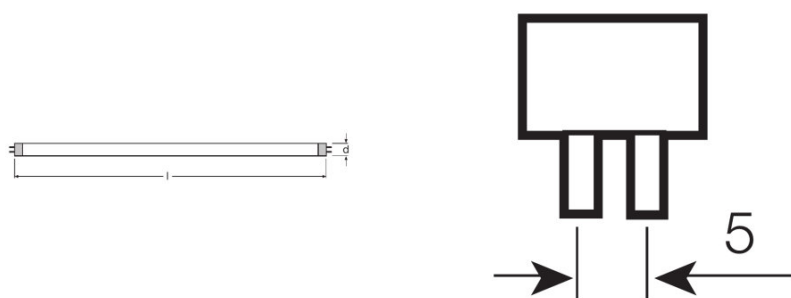
Electrical data

Nominal wattage	8.00 W
Rated lamp efficacy (HF data 25 °C)	Under clarification by authority and standardization body
Rated wattage	7.10 W

Photometrical data

Rated lamp efficacy (standard condition)	61 lm/W
Color rendering index Ra	≥80
Rated luminous flux	430 lm
Luminous flux at 25 °C	430 lm
Light color	2700
Rated color temperature	2700 K
Nominal luminous flux	430 lm
Light color (designation)	LUMILUX INTERNA
Rated LLMF at 2,000 h	0.80
Rated LLMF at 4,000 h	0.74
Rated LLMF at 6,000 h	0.71
Rated LLMF at 8,000 h	0.69
Color temperature	2700 K
Luminous flux	430 lm
Color rendering index Ra	≥80

Dimensions & weight



Tube diameter	16 mm
Length	288.3 mm
Length with base excl. base pins/connection	288.00 mm
Diameter	16.0 mm
Maximum diameter	16.0 mm

Temperatures & operating conditions

Rated ambient temp.w.max.luminous flux	35.0 °C
---	---------

Lifespan

Lifespan	10000 h ¹⁾
Rated lamp survival factor at 2,000 h	0.99
Rated lamp survival factor at 4,000 h	0.99
Rated lamp survival factor at 6,000 h	0.95
Rated lamp survival factor at 8,000 h	0.81
Operation mode LLMF/LSF	HF
Rated lamp life time	10000 h
Nominal lamp life time	10000 h

¹⁾ With CCG/LLCG

Additional product data

Base (standard designation)	G5
Mercury content	2.5 mg
Show WEEE picto	Yes

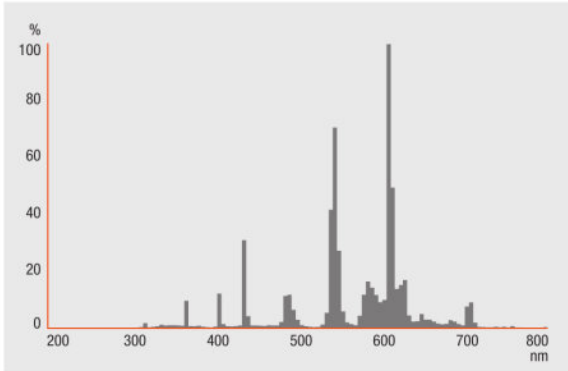
Capabilities

Suitable for indoor	Yes
----------------------------	-----

Certificates & standards

Energy efficiency class	A
Energy efficiency class	A
Energy consumption	8 kWh/1000h

Light Distribution



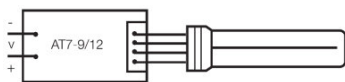
Spectral power distribution

SYSTEM GUARANTEE

- OSRAM System+ Guarantee in combination with OSRAM ECGs

SAFETY ADVICE

In case of lamp breakage: www.ledvance.com/brokenlamp



Die Zuleitungen 3 und 4 sollen so kurz wie möglich sein

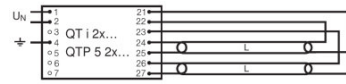
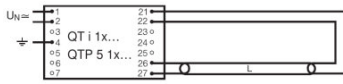


Die Zuleitungen 3 und 4 sollen so kurz wie möglich sein

Circuit diagram

Circuit diagram

Circuit diagram



Circuit diagram

Circuit diagram

LOGISTICAL DATA

Product code	Product description	Packaging unit (Pieces/Unit)	Dimensions (length x width x height)	Volume	Gross weight
4050300008943	L 8 W/827	Shipping carton box 25	320 mm x 93 mm x 105 mm	3.12 dm ³	973.10 g
4050300336961	L 8 W/827	Shipping carton box 10	313 mm x 51 mm x 105 mm	1.68 dm ³	460.00 g

The mentioned product code describes the smallest quantity unit which can be ordered. One shipping unit can contain one or more single products. When placing an order, for the quantity please enter single or multiples of a shipping unit.

DISCLAIMER

Subject to change without notice. Errors and omission excepted. Always make sure to use the most recent release.