

# PRODUCT DATASHEET

## HWL 250 W 240 V E40

HWL | Mercury mixed-light lamps for open and enclosed luminaires



---

### AREAS OF APPLICATION

- Factory and hall lighting with low-cost installations
- Upgrading light fittings with high-wattage incandescent lamps
- Factories and workshops
- Pedestrian zones, public squares
- Suitable for use in open and enclosed luminaires
- Outdoor applications only in suitable luminaires

---

### PRODUCT BENEFITS

- HWL lamps can be used instead of incandescent lamps because they do not need either control gear or igniters

## TECHNICAL DATA

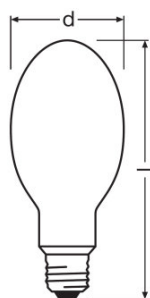
### Electrical data

Nominal wattage	250.00 W
Rated wattage	258.80 W
Lamp current	1.2 A
Nominal voltage	240 V

### Photometrical data

Rated lamp efficacy (standard condition)	21 lm/W
Rated luminous flux	5400 lm
Color rendering index Ra	57
Color temperature	3500 K
Rated LLMF at 2,000 h	0.97
Rated LLMF at 4,000 h	0.95
Rated LLMF at 6,000 h	0.93
Luminous flux	5600 lm

### Dimensions & weight



Diameter	91.0 mm
Length	226.0 mm
Product weight	191.00 g

### Temperatures & operating conditions

Maximum permitted outer bulb temperature	350 °C
Maximum permitted base edge temperature	250 °C

### Lifespan

Rated lamp survival factor at 2,000 h	0.99
Rated lamp survival factor at 4,000 h	0.98

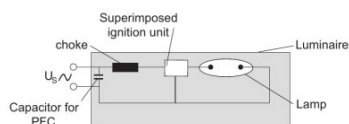
Rated lamp survival factor at 6,000 h	0.97
Rated lamp survival factor at 8,000 h	0.97
Operation mode LLMF/LSF	50 Hz

Additional product data

Base (standard designation)	E40
Design / version	Coated
Mercury content	14.4 mg

Capabilities

Burning position	hs45
Enclosed luminaire required	No



Circuit diagram

LOGISTICAL DATA

Product code	Product description	Packaging unit (Pieces/Unit)	Dimensions (length x width x height)	Volume	Gross weight
4008321001856	HWL 250 W 240 V E40	Shipping carton box 12	390 mm x 292 mm x 267 mm	30.41 dm <sup>3</sup>	3304.00 g

The mentioned product code describes the smallest quantity unit which can be ordered. One shipping unit can contain one or more single products. When placing an order, for the quantity please enter single or multiples of a shipping unit.

DISCLAIMER

Subject to change without notice. Errors and omission excepted. Always make sure to use the most recent release.