

EVERYDAY NEEDS

Jack Chain



| Features | | | |
|--------------------------------|-----------------------|------------|----------------|
| • Galvanised chain in a bucket | | | |
| Specifications | | | |
| Part No. | Description | Length (m) | Chain Dia (mm) |
| WATJCB* | Single link | 30 | 2.5 |
| WATJCLB | Double link (SA only) | 30 | 2.0 |
| WATJCB3 | Single link | 30 | 3.5 |

Commercial Clock



| Features | | |
|-------------------------------------|------------------|-------------|
| • Batteries not included with clock | | |
| Specifications | | |
| Part No. | Description | Size (inch) |
| WATCL101* | Commercial clock | 9 |
| WATCL8400 | Commercial clock | 12 |

Wall Plugs



| Features | | | |
|-------------------------------------|-----------|--------|---------|
| • Strong screw retention wall plugs | | | |
| Specifications | | | |
| Part No. | Size (mm) | Colour | Box Qty |
| WATP25G* | 7 x 25 | Green | 500 |
| WATP32G | 7 x 32 | Green | 500 |
| WATP38G | 7 x 38 | Green | 500 |
| WATP50G | 7 x 50 | Green | 250 |
| WATP25R | 6 x 25 | Red | 500 |
| WATP38R | 6 x 38 | Red | 500 |
| WATP50R | 6 x 50 | Red | 250 |
| WATP25W | 5 x 25 | White | 500 |
| WATP38W | 5 x 38 | White | 500 |

Fluorescent Starters



| Features | | | | |
|--|----------------------|-------|---------|------------|
| • 220–240V fluorescent starters | | | | |
| • Meets safety specification BS3772 | | | | |
| • Office of Energy for use in Australia—Approval Number N13754 | | | | |
| Specifications | | | | |
| Part No. | Description | Watts | Box Qty | Carton Qty |
| WATFS2 | Fluorescent starters | 10–20 | 25 | 250 |
| WATFSU | Fluorescent starters | 4–80 | 25 | 250 |

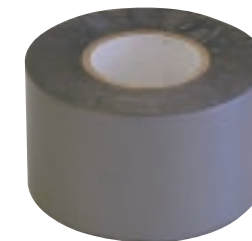
EVERYDAY NEEDS - TAPES

Caution Tape



| Features | | |
|---|-------------------------------|--------|
| • Printed "CAUTION – Temporary Construction Wiring" | | |
| Specifications | | |
| Part No. | Description | Colour |
| WATCTAPE | Caution tape, 38mm x 50m roll | Yellow |

PVC Sealing and Joining Tape



| Features | | |
|---|--|--------|
| • PVC tape suitable for joining flexible duct | | |
| Specifications | | |
| Part No. | Description | Colour |
| WATPVCDT | Sealing and joining tape 0.13mm x 48mm x 30m roll | Grey |

Double Sided Tape



| Features | | | |
|-------------------------|-------------------|------------|------------|
| • Multipurpose tape | | | |
| • Double sided adhesive | | | |
| Specifications | | | |
| Part No. | Description | Width (mm) | Length (m) |
| WATDST12 | Double sided tape | 12 | 10 |
| WATDST18 | Double sided tape | 18 | 10 |
| WATDST24 | Double sided tape | 24 | 10 |

Underground Marking Tape



| Features | | | |
|--|--------|------------|------------|
| • PVC underground identification tape, 2 kinds available: | | | |
| • Printed "CAUTION – ELECTRICAL CABLE BELOW" (orange) | | | |
| • Printed "CAUTION – BURIED COMMUNICATIONS BELOW" (white) with wire tracer | | | |
| Specifications | | | |
| Part No. | Colour | Width (mm) | Length (m) |
| WATPVCUMT | Orange | 150 | 500 |
| WATUGMTW250 | White | 150 | 250 |
| WATUMT100* | Orange | 150 | 100 |

PVC Electrical Insulating Tape



| Features | | | | |
|-------------------------------------|--------------|----------------|------------|------------|
| • Temperature range –10°C to 80°C | | | | |
| • Rainbow Pack comes in pack of 10* | | | | |
| Specifications | | | | |
| Part No. | Colour | Thickness (mm) | Width (mm) | Length (m) |
| WATPVCYL#1 | Green/Yellow | 0.15 | 18 | 20 |
| WATPVCOLT | Orange | 0.15 | 18 | 20 |
| WATPVCRLT#2 | Red | 0.15 | 18 | 20 |
| WATPVCWLT#3 | White | 0.15 | 18 | 20 |
| WATPVCBLLT | Blue | 0.15 | 18 | 20 |
| WATPVCBLALT#4 | Black | 0.15 | 18 | 20 |
| WATPVCBRLT | Brown | 0.15 | 18 | 20 |
| WATPVCGLT | Grey | 0.15 | 18 | 20 |
| WATPVCRP* | Rainbow Pack | 0.15 | 18 | 20 |