

Fire and Acoustic Rated Acrylic Construction Sealant

Australian Made Product

BLAZE BRAKE™

BLAZE BRAKE is fire and acoustic rated for sealing residential and office partitions and concrete block BLAZE BRAKE is a water clean-up, 1-part, flexible Acrylic construction sealant, which does not dry out or crack.

It is suggested if application is strictly adhered to manufactures instructions it is believed to have a design life of 10 years from date of manufacture.

Recommended Uses

- Sealing gaps around pipes, cables, ducts and services, which penetrate fire-rated walls and floors
- Sealing joints and penetrations in acoustic partitions and walls
- Sealing joints in precast and tilt-up construction
- To prevent the spread of fire and smoke through walls and floors
- Refer to Blazebrake fire test certificates for approved fire applications



Suitable For Use On

- Concrete
- CSR Hebel® Aerated Autoclaved Concrete
- Concrete Block
- Plasterboard
- Fibre cement



Features And Benefits

- **Fire rated** according to AS1530.4 2005, BS476: Part 20:1987 and AS4072-1.1-1992
- **Acoustic Rated**
- **Flexible and crack resistant** – joint movement $\pm 15\%$
- **User Friendly**
 - o Easy to dispense in cold weather
 - o Low odour
 - o Easy tooling
 - o Water clean up
 - o Sag Resistant
- **OH&S Friendly**
 - o Not HAZARDOUS – no isocyanates, no heavy metals, no solvents, no asbestos
 - o Low VOC
 - o Paintable with acrylic coatings and oil-based coatings after 24 hours at 20°C.

Typical Properties

Colour:	Grey
Chemical Type:	Acrylic co-polymer
Service Temperature:	-20°C to + 90°C
Specific Gravity (Density):	Wet 1.6 Kg / L Dry 1.8 Kg / Lq
Application Temperature:	+5°C to + 35°C
Tool Working Time:	15 minutes at 25°C
Max. Joint Movement:	$\pm 15\%$
Max. Joint Width:	50mm
Full Cure:	7 days at 25°C
Acoustic Rating:	Rw 56
VOC:	17 g / L
Fire Rating:	Up to 4 hours*

Note: *Fire Rating Certificates Available on Request
Refer to BRANZ Fire Test Certificates 439, 440 and 441

Continued >



Transport & Storage

BLAZEBRAKE is not flammable for transport and storage.

Precautions

- Not for temporary or permanent immersion in water. Prolonged contact with water may result in loss of adhesion.
- Not recommended for exterior applications – use Ramset™ FyreBrake™ Polyurethane Sealant
- Do not use in horizontal joints in decks, patios, driveways or terrace joints where standing water, traffic, high abrasion or physical abuse is encountered
- May not dry in totally confined or air free spaces
- Do not use on surfaces with special protective or cosmetic coating such as mirrors, reflective glass or surfaces coated with Teflon, polyethylene or polypropylene
- Pre-test on absorptive natural stone surfaces such as marble, limestone or granite for staining and/or discolouration
- Do not use in contact with material containing bitumen.

Joint Design

Consult Joint Design Guide available from Ramset or the web. Unless otherwise specified, joint design must conform to the following joint width to joint depth relationships.

Joint Width	Joint Depth
6mm to 10mm	Equal to Joint Width
10mm to 20mm	10mm
20mm to 50mm	Equal to ½ x Joint Width

- Depth must not be less than 6 mm.
- Joint movement (strain) capacity of BLAZEBRAKE is ± 15% of nominal joint width. Anticipated joint movement must be less than the joint movement capacity.
- Lap shear joints should have a bead width equal to, or greater than twice the anticipated movement.
- For all applications requiring a high degree of dynamic movement the designed joint width should be at least seven times the total anticipated joint movement.
- Failure to observe these recommendations can result in tearing or splitting of the sealant.

BLAZEBRAKE
APPLICATION INSTRUCTIONS

Joint Preparation

Concrete must be at least 28 days old. Surfaces must be clean, dry, sound and free from laitance, dust, oil, grease, form release agents, surface coatings, adhesives or any agent, substance, material or contaminant that may interfere with the bond or may later affect the sealant.

Remove all dirt, dust, laitance and loose materials by vigorous wire brushing.

Joint faces must be sound, flat and free of surface irregularities. Concrete panel edges to be well-compacted concrete with Class 2 finish according to AS3610.

For any joint faces not meeting these requirements, form a fresh joint surface by saw cutting or refacing with a cement mortar.

For a neat finish, cover the face edges of the joint with masking tape before applying BLAZEBRAKE.

To avoid three-sided adhesion, install a bond breaker, such as Ramset Backer Rod in the joints prior to application of BLAZEBRAKE.

Priming not usually required.

If surface quality is in doubt, apply a bead of sealant and allow to dry, to test adhesion before committing to the whole job.

BLAZEBRAKE is suitable for use on CSR Hebel® AAC without primer.

Application

Ensure surface and sealant temperatures are greater than 5 C. Apply BLAZEBRAKE sealant in a continuous operation using positive pressure to properly fill and seal the joint. Tool the sealant to force it against the back-up material and onto the joint surfaces to promote adhesion. Use a tool with a convex profile to keep the sealant within the joint.

Wipe excess sealant from all surfaces with a damp cloth before it dries.

If masking tape is used, remove it before sealant skins.

Tooling Time: Complete tooling within 15 minutes of application.

Skimming Time: 30 Minutes @ 25°C

Curing: Drying depends on temperature, humidity and cross-section dimensions when installed Typically full cure is achieved within 7 days.

Pack Sizes And Order Numbers

300ml cartridge

BLBRGYC



600ml Satchet

BLBRGYS



Storage

Store between 5°C and 30°C. Shelf life is 1yr in original unopened container.

HEALTH AND SAFETY BLAZEBRAKE is water-based so fumes and odour are minimal. Avoid contact with the skin, eyes. Wear protective gloves when using. For more detailed information refer to the Material Safety Data Sheet.



Continued >

ESTIMATING CHART

Lineal Metres per 960 g (600 ml) Sachet (Approx)

Joint Depth	Nominal Joint Width (mm)							
	6	8	10	12	15	20	25	50
6 mm	16.6	--	--	--	--	--	--	--
8 mm	x	9.4	--	--	--	--	--	--
10 mm	x	x	6.0	5.0	4.0	3.0	--	--
12.5 mm	x	x	x	x	x	x	1.9	--
25 mm	x	x	x	x	x	x	x	0.5

Lineal Metres per 450 g (300 ml) Cartridge (Approx)

Joint Depth	Nominal Joint Width (mm)							
	6	8	10	12	15	20	25	50
6 mm	8.3	--	--	--	--	--	--	--
8 mm	x	4.7	--	--	--	--	--	--
10 mm	x	x	3.0	2.5	2.0	1.5	--	--
12.5 mm	x	x	x	x	x	x	1.0	--
25 mm	x	x	x	x	x	x	x	0.3

Coverage based on nominal dimensions

"--" Shallow joint. Risk of sealant tearing. Make joint deeper.

"x" Joint depth > width. Risk of sealant tearing. Adjust depth with backing rod.

Refer to the above Joint Design Section for correct joint design details.

[Continued >](#)

BLAZEBRAKE APPROVED FIRE RATING CONFIGURATIONS

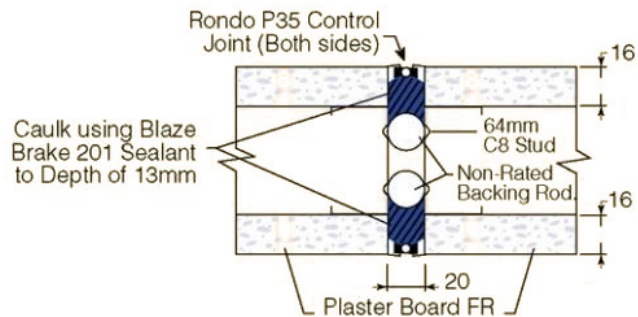
Before using BLAZEBRAKE for Fire Rated applications, refer to full fire test reports available from Ramset™ or www.ramset.co.nz and www.ramset.com.au



BLAZEBRAKE Approved Configurations for 1 hour Fire Rated Sealing of Joints and Penetrations in Fire Rated Plasterboard to AS1530.4 –1990 (Refer BRANZ Fire Test Certificate 439)

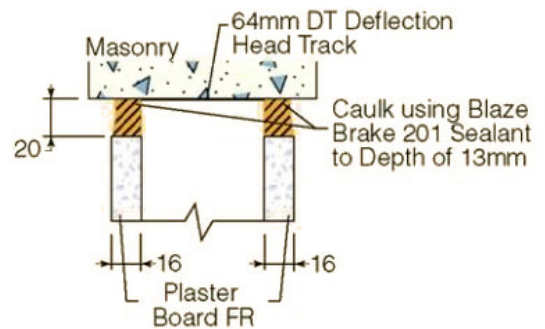
Config 1 - 1HR. Control Joint - Dry Wall

Fire Test Report:	FP3698
FRL:	-/60/60
Plasterboard Thickness:	16 mm
Sealant Thickness:	13 mm
Joint Width:	20 mm



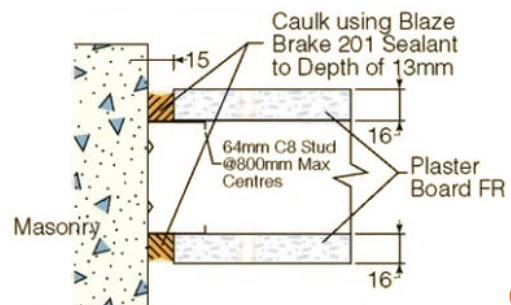
Config 2 - 1HR. Deflection Head - Dry Wall

Fire Test Report:	FP3698
FRL:	-/60/60
Plasterboard Thickness:	16 mm
Sealant Thickness:	13 mm
Joint Width:	20 mm



Config 3 - 1HR. Intersection With Masonry - Dry Wall

Fire Test Report:	FP3698
FRL:	-/60/60
Plasterboard Thickness:	16 mm
Sealant Thickness:	13 mm
Joint Width:	20 mm



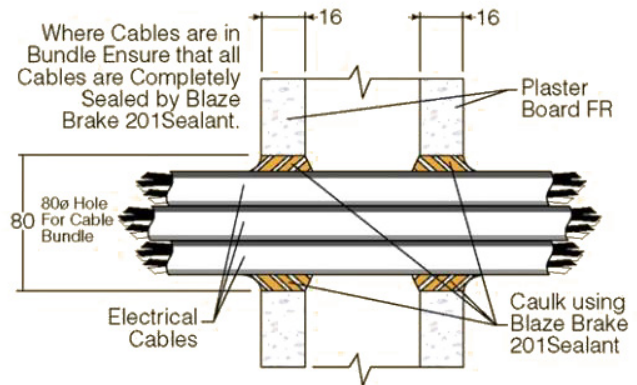
Continued >

Before using BLAZEBRAKE for Fire Rated applications, refer to full fire test reports available from Ramset™ or www.ramset.co.nz and www.ramset.com.au



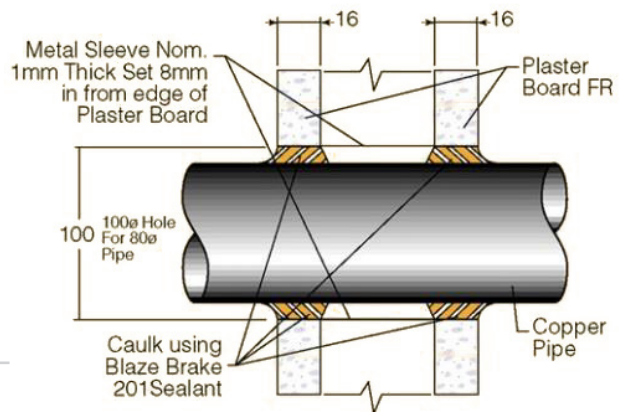
Config 4 - 1HR. Cable Penetration - Dry Wall

Fire Test Report:	FP3698
FRL:	-/60/60
Plasterboard Thickness:	16 mm
Sealant Thickness:	16 mm
Cable Bundle Diameter:	65 mm
Penetration Diameter:	80 mm



Config 5 - 1HR. Pipe Penetration - Dry Wall

Fire Test Report:	FP3698
FRL (No Radiation Screen):	-/60/0
FRL (Radiation Screen):	-/60/60
Plasterboard Thickness:	16 mm
Sealant Thickness:	16 mm
Pipe Outer Diameter:	76 mm
Penetration Diameter:	100 mm



To obtain -/60/60 FRL, fit 240 mm diameter x 450 mm long metal mesh radiation screen concentrically around copper pipe on non-fire side

Metal Sleeve: Minimum 0.6 mm galvanised steel sleeve 100 mm diameter x 80 mm long

Continued >

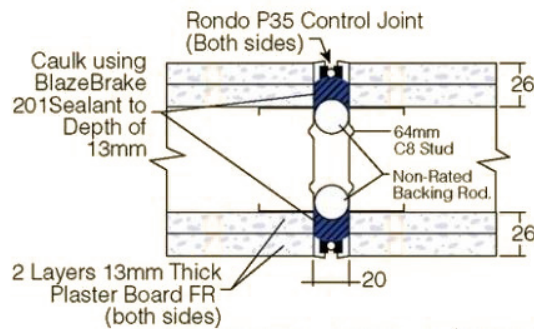
Before using BLAZEBRAKE for Fire Rated applications, refer to full fire test reports available from Ramset™ or www.ramset.co.nz and www.ramset.com.au



BLAZEBRAKE Approved Configurations for 2 hour Fire Rated Sealing of Joints and Penetrations in Fire Rated Plasterboard to AS1530.4 –1990 (Refer BRANZ Fire Test Certificate 440)

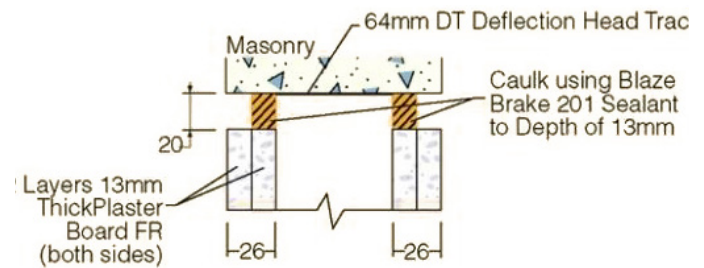
Config 1a - 2HR. Control Joint - Dry Wall

Fire Test Report:	FP3699
FRL:	-/120/90
Plasterboard Thickness:	26 mm
Sealant Thickness:	13 mm
Joint Width:	20 mm



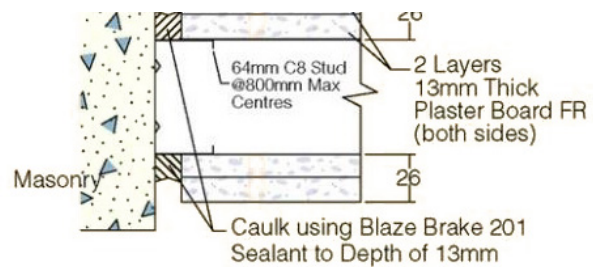
Config 2a - 2HR. Deflection Head - Dry Wall

Fire Test Report:	FP3699
FRL:	-/120/90
Plasterboard Thickness:	26 mm
Sealant Thickness:	13 mm
Joint Width:	20 mm



Config 3a - 2HR. Intersection With Masonry - Dry Wall

Fire Test Report:	FP3699
FRL:	-/120/90
Plasterboard Thickness:	26 mm
Sealant Thickness:	13 mm
Joint Width:	20 mm



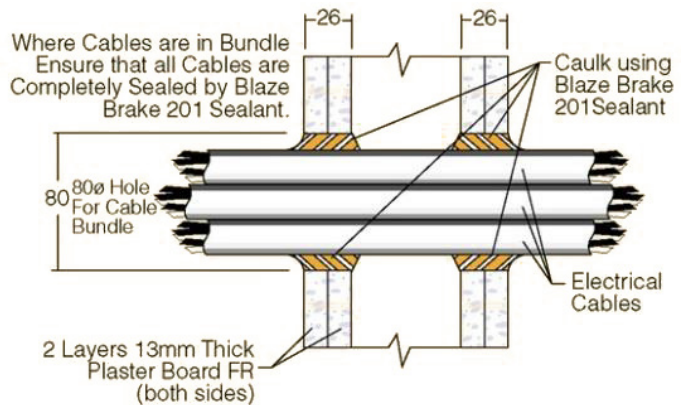
Continued >

Before using BLAZEBRAKE for Fire Rated applications, refer to full fire test reports available from Ramset™ or www.ramset.co.nz and www.ramset.com.au



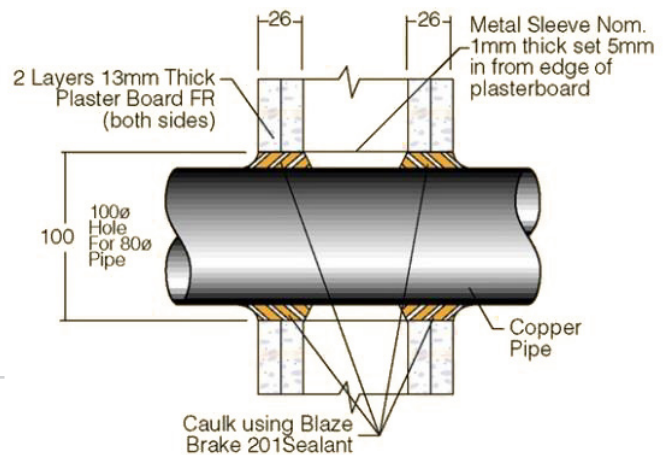
Config 4a - 2HR. Cable Penetration - Dry Wall

Fire Test Report:	FP3699
FRL:	-/120/60
Plasterboard Thickness:	26 mm
Sealant Thickness:	26 mm
Cable Bundle Diameter:	65 mm
Penetration Diameter:	80 mm



Config 5a - 2HR. Pipe Penetration - Dry Wall

Fire Test Report:	FP3699
FRL (No Radiation Screen):	-/120/0
FRL (Radiation Screen):	-/120/120
Plasterboard Thickness:	26 mm
Sealant Thickness:	26 mm
Pipe Outer Diameter:	80 mm
Penetration Diameter:	100 mm



To obtain -/120/120 FRL, fit 240 mm diameter x 450 mm long metal mesh radiation screen concentrically around copper pipe on non-fire side

Metal Sleeve: Minimum 0.6 mm galvanised steel sleeve 100 mm diameter x 80 mm long

Continued >

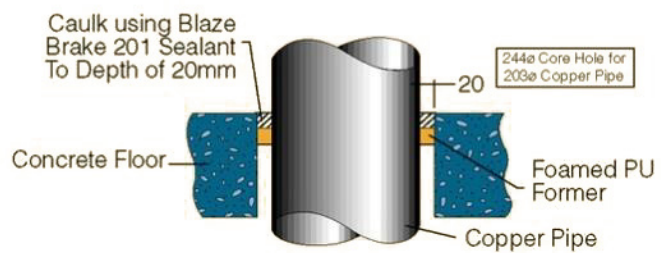
Before using BLAZEBRAKE for Fire Rated applications, refer to full fire test reports available from Ramset™ or www.ramset.co.nz and www.ramset.com.au



BLAZEBRAKE Approved Configurations for Fire Rated Sealing of Joints and Penetrations in Concrete Floors to AS 1530.4 – 1990 (Refer BRANZ Fire Test Certificate 441)

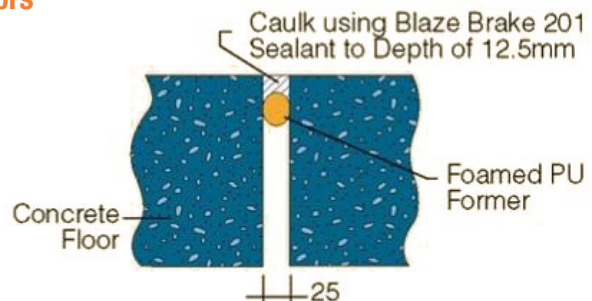
Config 1_1 - 2HR. Pipe Penetration - Concrete Floors

Fire Test Report:	FP3701
FRL: (No Radiation Screen)	-/120/0
Concrete Thickness:	180 mm
Sealant Thickness:	20 mm
Pipe Outer Diameter:	203 mm
Penetration Diameter:	203 mm



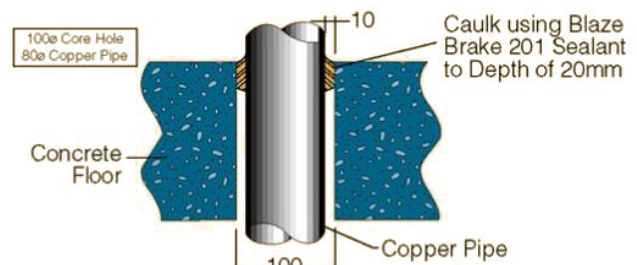
Config 2_1 - 4HR. Control Joint - Concrete Floors

Fire Test Report:	FP3701
FRL:	-/240/240
Concrete Thickness:	170 mm
Sealant Thickness:	12.5 mm
Joint Width:	25 mm



Config 3_1 - 4HR. Pipe Penetration - Concrete Floors

Fire Test Report:	FP3700
FRL (No Radiation Screen):	-/240/30
FRL (With Radiation Screen):	-/240/240
Concrete Thickness:	170 mm
Sealant Thickness:	20 mm
Pipe Outer Diameter:	80 mm
Penetration Diameter:	100 mm



To obtain -/240/240 FRL, fit 240 mm diameter x 450 mm long metal mesh radiation screen concentrically around copper pipe on non-fire side

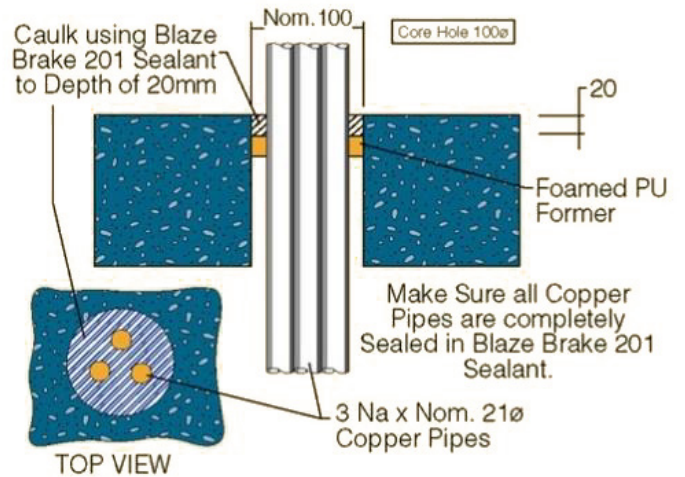
Continued >

Before using BLAZEBRAKE for Fire Rated applications, refer to full fire test reports available from Ramset™ or www.ramset.co.nz and www.ramset.com.au



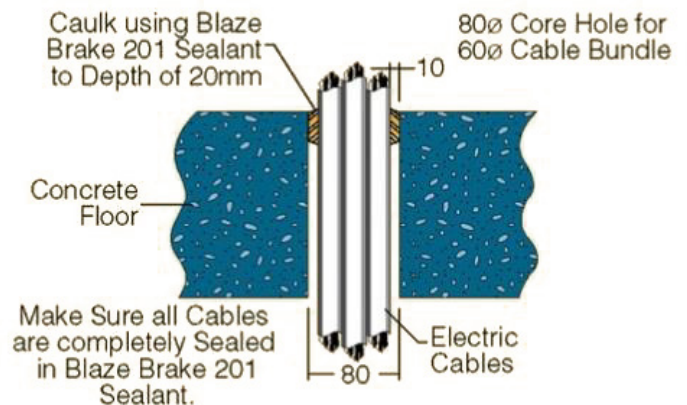
Config 4_1 - 4HR. Cable Penetration - Concrete Floors

Fire Test Report:	FP3701
FRL (No Radiation Screen):	-/240/0
Concrete Thickness:	180 mm
Sealant Thickness:	20 mm
Pipe Outer Diameter:	21 mm x 3
Penetration Diameter:	100 mm



Config 5_1 - 4HR. Pipe Penetration - Concrete Floors

Fire Test Report:	FP3700
FRL	-/240/120
Concrete Thickness	170 mm
Sealant Thickness	20 mm
Cable Bundle Diameter	60 - 65 mm
Penetration Diameter	80 mm



Continued >

Before using BLAZEBRAKE for Fire Rated applications, refer to full fire test reports available from Ramset™ or www.ramset.co.nz and www.ramset.com.au



BLAZEBRAKE Approved Configurations for Fire Rated Sealing of Pipe Penetrations in Concrete Floors to AS 1530.4 – 1990 (Refer BRANZ Fire Assessment Report FAR3318)

Concrete Depth: 170 mm

Pipe Specimen Nominal Diameter	FRL	Radiation Guard	Sealant Width x Depth	Backing Rod
Copper 20 mm	-/240/240	Yes	10 x 20 mm	No
Copper 20 mm	-/240/30	No	10 x 20 mm	No
Copper 25 mm	-/240/240	Yes	10 x 20 mm	No
Copper 25 mm	-/240/30	No	10 x 20 mm	No
Copper 32 mm	-/240/240	Yes	10 x 20 mm	No
Copper 32 mm	-/240/30	No	10 x 20 mm	No
Copper 40 mm	-/240/240	Yes	10 x 20 mm	No
Copper 40 mm	-/240/30	No	10 x 20 mm	No
Copper 50 mm	-/240/240	Yes	10 x 20 mm	No
Copper 50 mm	-/240/30	No	10 x 20 mm	No
Copper 65 mm	-/240/240	Yes	10 x 20 mm	No
Copper 65 mm	-/240/30	No	10 x 20 mm	No
Copper 100 mm	-/120/0	No	20 x 20 mm	Yes
Stainless Steel 316 200 mm x < 2.2 mm wall thickness	-/120/0	No	20 x 20 mm	Yes

Radiation guard:

Metal mesh radiation screen concentrically around copper pipe on non-fire side. Diameter at least 3 times pipe diameter and at least 450 mm long.

To the extent permitted by statute, ITW Australia Pty Limited, its servants and its agents will not be liable (whether in negligence or other tort, by contract or under statute) in respect of any loss or damage (including consequential loss or damage) arising by any reason of or in connection with the provision of the information or by purported reliance on it.

customer service

Ramset™ Australia

Sales, Orders and Enquiries

Tel: 1300 780 063

Fax: 1300 780 064

Email: enquiry@ramset.com.au

Web: www.ramset.com.au

Ramset™ New Zealand

Sales, Orders and Enquiries

Tel: 0800 RAMSET (726738)

Fax: 09 444 2864

Email: info@ramsetreid.co.nz

Web: www.ramset.co.nz

australian trade centres

Victoria

5/71 Victoria Crescent,
Abbotsford 3067

1 Ramset Drive,
Chirnside Park 3116

New South Wales

71 Carnarvon Street,
Silverwater 2128

3/8 Channel Road,
Mayfield West 2304

Queensland

53 Doggett Street,
Newstead 4006

Western Australia

525 Abernethy Road,
Kewdale 6105

South Australia

115 Sir Donald Bradman Drive,
Hilton 5033

new zealand trade centres

Auckland - Glenfield

23-29 Poland Rd
p 09 447 1296
f 09 447 1297
e albany@ramsetreid.co.nz

Auckland - Penrose

35 Station Rd
p 09 579 3072
f 09 579 1701
e auckland@ramsetreid.co.nz

Auckland - Henderson

123 Central Park Drive
p 09 838 9865
f 09 837 3014
e henderson@ramsetreid.co.nz

Auckland - East Tamaki

Unit 1, 333 East Tamaki Road
p 09 272 4701
f 09 272 4703
e easttamaki@ramsetreid.co.nz

Whangarei

Territory Manager
p 09 438 2010
f 09 438 9188
e whangarei@ramsetreid.co.nz

Hamilton

15 Somerset St
p 07 847 9047
f 07 847 9980
e hamilton@ramsetreid.co.nz

Tauranga - Mt Maunganui

Unit 1, 15 Portside Drive
p 07 572 0520
f 07 572 0530
e tauranga@ramsetreid.co.nz

Rotorua

Waterford Park Estate
50 Old Taupo Rd
p 07 348 0190
f 07 348 9200
e rotorua@ramsetreid.co.nz

New Plymouth

Territory Manager
p 06 759 8984
f 06 759 8983
e newplymouth@ramsetreid.co.nz

Palmerston North

903 Tremaine Avenue
p 06 357 6745
f 06 357 6775
e palmerstonnorth@ramsetreid.co.nz

Napier - Onekawa

124 Taradale Road
p 06 843 0067
f 06 843 0043
e napier@ramsetreid.co.nz

Lower Hutt

46 Victoria St
p 04 569 7247
f 04 566 8752
e lowerhutt@ramsetreid.co.nz

Wellington

147 Taranaki St
p 04 384 4138
f 04 385 0868
e wellington@ramsetreid.co.nz

Nelson

Territory Manager
p 03 548 2664
f 03 548 3559
e nelson@ramsetreid.co.nz

Christchurch - City

120 Montreal St
p 03 341 8710
f 03 341 8730
e christchurch@ramsetreid.co.nz

Christchurch - Hornby

Unit 2/37 Foremans Rd
p 03 349 4749
f 03 349 4750
e hornby@ramsetreid.co.nz

Dunedin

5 Melbourne St
p 03 455 1134
f 03 456 1388
e dunedin@ramsetreid.co.nz

Invercargill

Territory Manager
p 03 218 9241
f 03 214 7787
e invercargill@ramsetreid.co.nz

Queenstown

200A Glenda Dr
p 03 442 8073
f 03 442 8074
e queenstown@ramsetreid.co.nz

ramsetreid™ 1 Ramset Drive, Chirnside Park 3116

Information in this document is correct at the time of printing. Readers should contact ramsetreid™ or consult ramsetreid™ detailed technical information to ensure product is suitable for intended use prior to purchase. ITW Australia Pty Ltd ABN 63 004 235 063 trading as ramsetreid™

© copyright 2019. ™ Trademarks of Cetram Pty. Ltd. Used under license by ramsetreid™

