

# House service cut outs fuse links



## Product description

Eaton's Bussmann® series house service cut-out fuse links are specifically designed for utility and residential applications.

**Catalogue symbol KR85 fuse links**

- (amp rating)KR85

**Technical data**

- Rated voltage: 415 V a.c.
- Rated current: 5 to 100 A
- Breaking capacity: 33 kA
- Class of operation: gG

**Standards/Approvals**

- ASTA certified
- IEC 60269-3
- EN 60269-3
- BS88-3 Fuse system C (previously known as BS 1361)

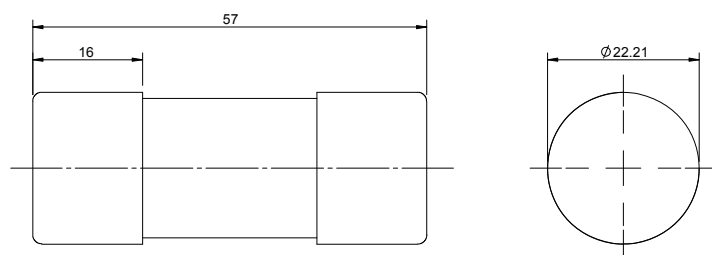
**Packaging**

- MOQ: 20

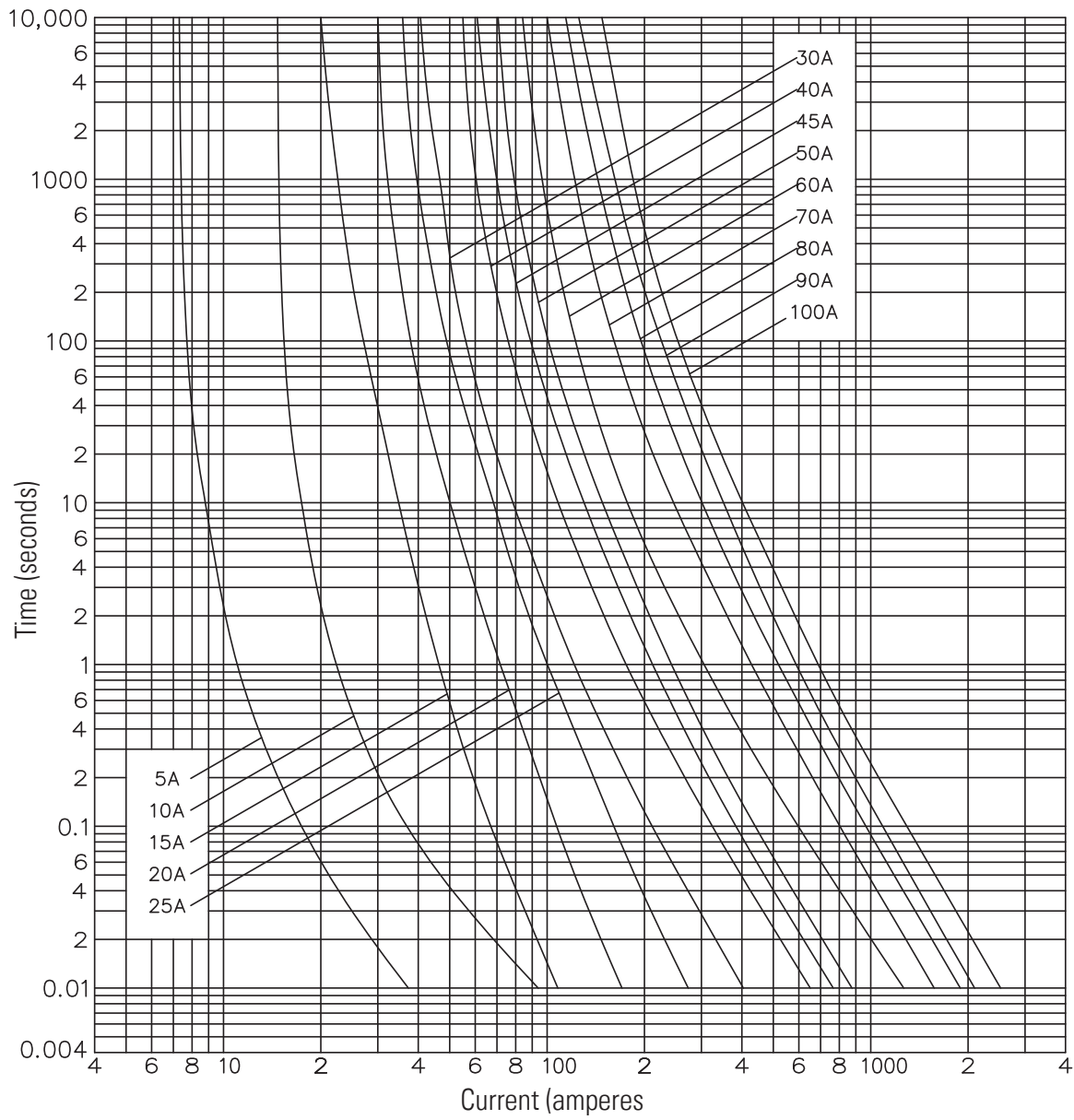
**Table 1. Technical Data**

Catalogue number	Rated current (Amps)	Rated voltage (V a.c.)	I <sup>2</sup> t (Amp <sup>2</sup> seconds)			Nom watts loss
			Pre-arcing	Total at 240 V a.c.	Total at 415 V a.c.	
5KR85	5	415	8.4	15	23.5	2.5
10KR85	10	415	84	150	235	3.3
15KR85	15	415	53	90	130	2.9
20KR85	20	415	215	360	510	2.6
25KR85	25	415	480	815	1150	2.8
30KR85	30	415	1000	2700	5700	3
40KR85	40	415	2500	6800	14000	3.8
45KR85	45	415	3600	9880	20500	3.8
50KR85	50	415	4720	13000	27000	4.2
60KR85	60	415	9100	25000	52000	4.3
70KR85	70	415	17000	29000	40500	4.8
80KR85	80	415	24500	41500	58500	5.4
90KR85	90	415	33000	56500	79500	5.7
100KR85	100	415	43500	73500	105000	6.1

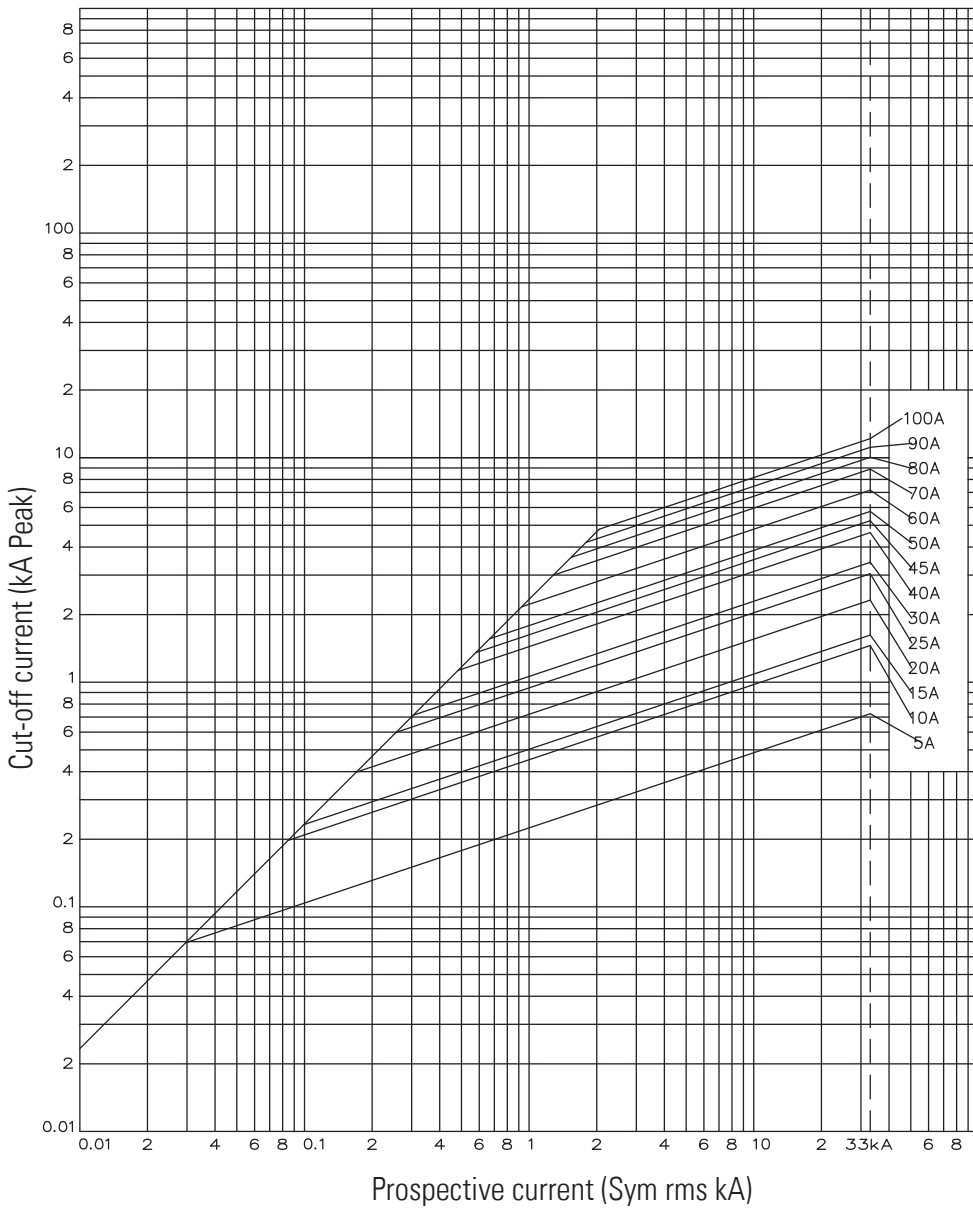
**Dimensions - mm**



Time-current curve characteristics - KR85



**Cut-off current curve - KR85**



## House service cut outs fuse links

### Catalogue symbol LR85 fuse links

- (amp rating)LR85

### Technical data

- Rated voltage: 415 V a.c.
- Rated current: 30 to 100 A
- Breaking capacity: 33 kA
- Class of operation: gG

### Standards/Approvals

- ASTA certified
- IEC 60269-3
- EN 60269-3
- BS88-3 Fuse system C (previously known as BS 1361)

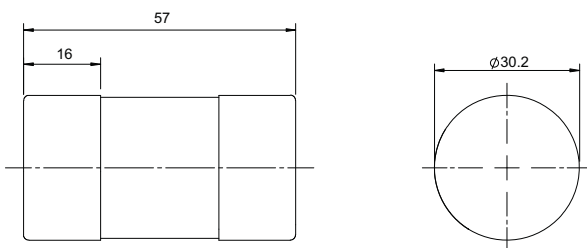
### Packaging

- MOQ: 20

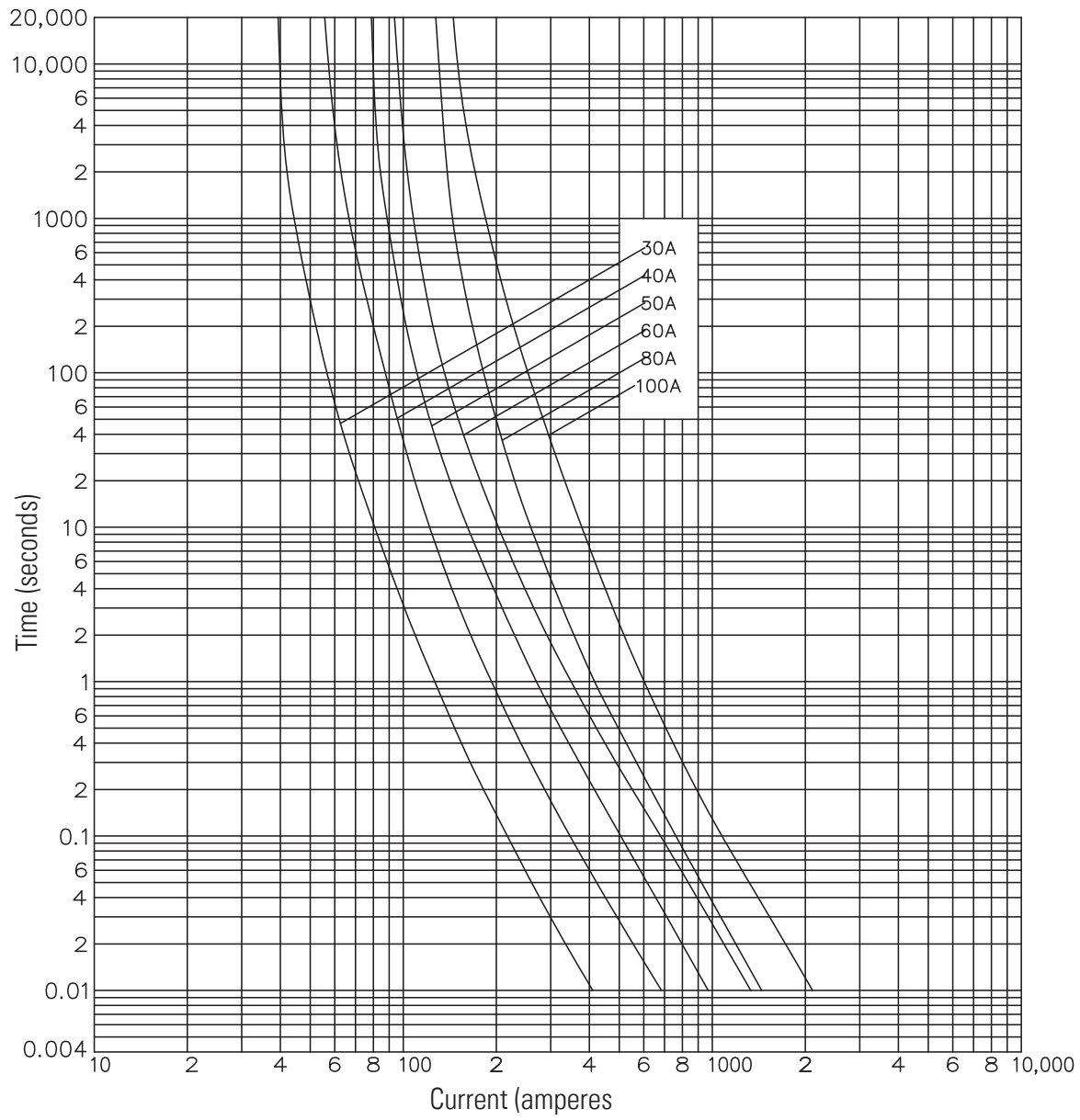
**Table 2. Technical Data**

Catalogue number	Rated current (Amps)	Rated voltage (V a.c.)	I <sup>2</sup> t (Amp <sup>2</sup> seconds)			Nom watts loss
			Pre-arcing	Total at 240 V a.c.	Total at 415 V a.c.	
30LR85	30	415	1200	2300	3600	3.4
40LR85	40	415	3680	6900	11,000	3.5
50LR85	50	415	6360	12,000	19,100	4.1
60LR85	60	415	12,700	24,000	38,100	4.5
80LR85	80	415	13,200	38,100	82,500	4.9
100LR85	100	415	26,900	57,300	99,500	5

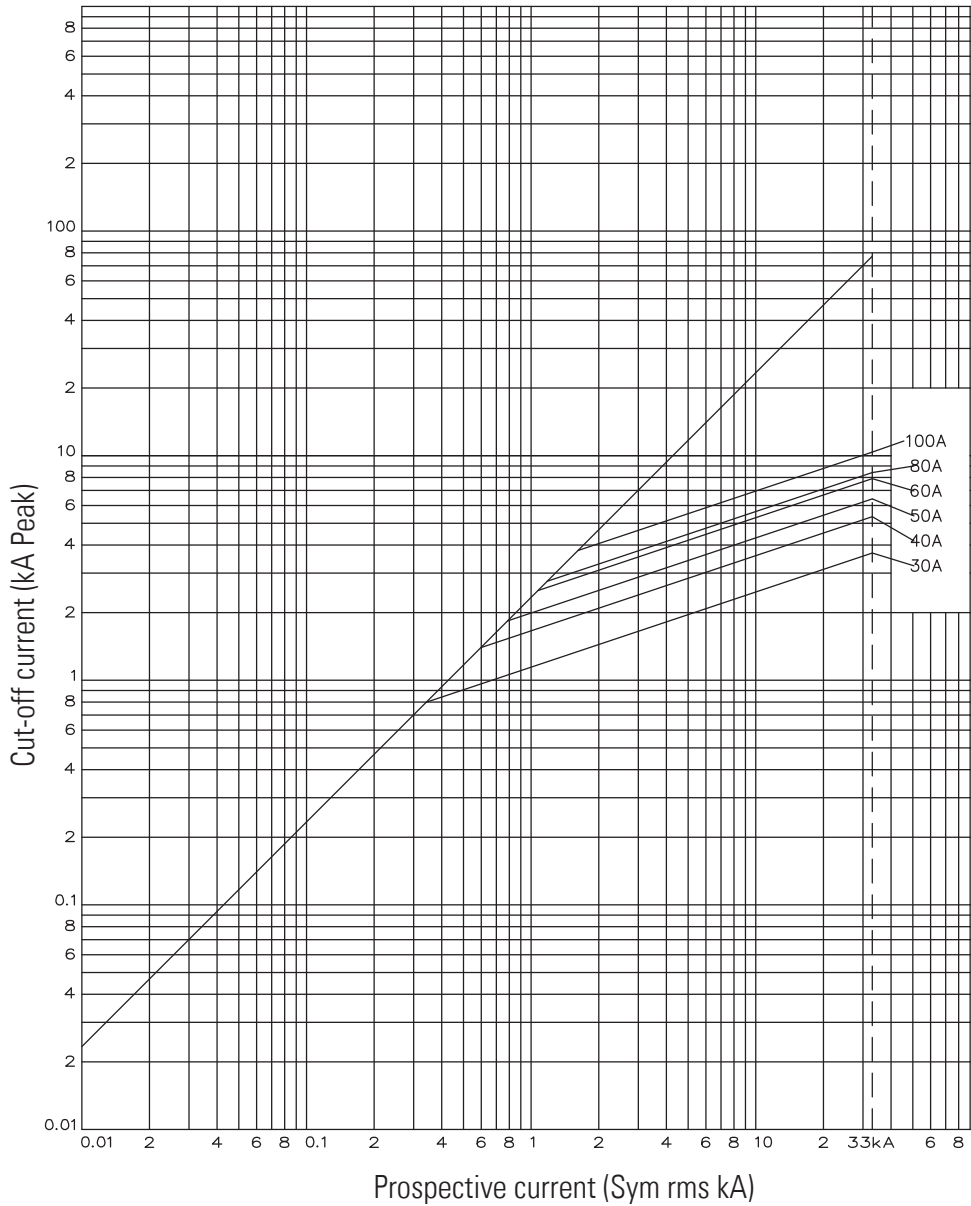
### Dimensions - mm



**Time-current curve characteristics - LR85**



**Cut-off current curve - LR85**



Changes to the products, to the information contained in this document, and to prices are reserved; so are errors and omissions. Only order confirmations and technical documentation by Eaton is binding. Photos and pictures also do not warrant a specific layout or functionality. Their use in whatever form is subject to prior approval by Eaton. The same applies to Trademarks (especially Eaton, Moeller, and Cutler-Hammer). The Terms and Conditions of Eaton apply, as referenced on Eaton Internet pages and Eaton order confirmations.

**Eaton Electrical Products Limited**  
 Unit 1, Hawker Business Park  
 Melton Road  
 Burton-on-the-Wolds  
 LE12 5TH, United Kingdom  
 www.eaton.com

© 2021 Eaton  
 All Rights Reserved  
 Publication No. 720114  
 September 2021



Eaton is a registered trademark.

All other trademarks are property of their respective owners.