

COMMERCIAL DIFFUSED & OPEN

The commercial range of Davis products are available in diffused and open models. The diffused range of Davis products utilise acrylic panels for light dispersion. The panels are either the lay-in type or supplied in a hinged frame. These panel options include prismatic types K12, K15 and opal.

This commercial range has models suitable for recessed installation in suspended 2 way T/Bar ceilings, including Air Handling applications and plaster ceilings. The range also incorporates models suitable for surface mounting direct to ceiling. All recessed luminaires are supplied standard with 25mm cable entry for hard wiring. Please check with your local sales office for the standard supplied in your area. Surface mounted luminaires are supplied with 25mm cable entry as standard.



Application Example

ARMSTRONG SERIES

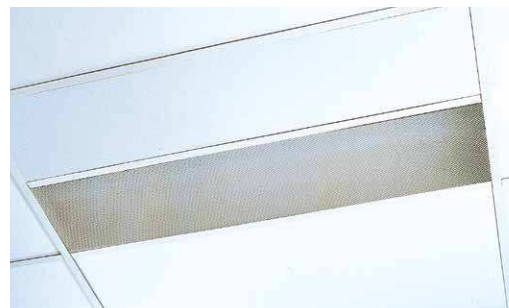
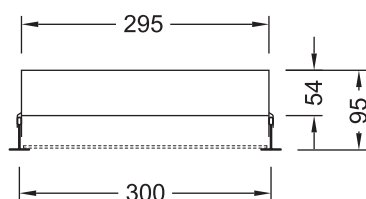
The Armstrong series of luminaires are designed for recessed mounting in exposed 2 way T/Bar ceilings. They are available in both diffused and open models.

Recessed Diffused T/Bar T8

Armstrong Budget Recessed T/Bar

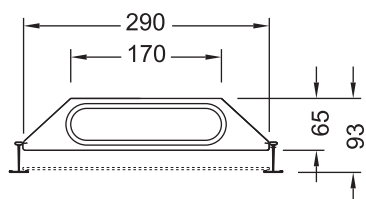
For recessed T/Bar ceilings. x designates diffuser type. K12, K15 or opal lay-in diffuser.

ARM118x	1/18w	600mm	(nom)
ARM136x	1/30w	1200mm	(nom)



For recessed T/Bar ceilings. x designates diffuser type. K12, K15 or opal lay-in diffuser.

ARM218x	2/18w	600mm	(nom)
ARM236x	2/36w	1200mm	(nom)



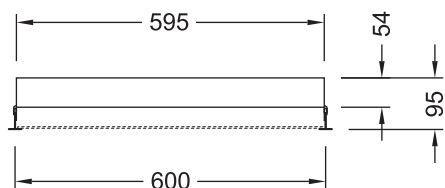


Recessed Diffused T/Bar T8

Armstrong Budget Recessed T/Bar

For recessed T/Bar ceilings. x designates diffuser type. K12, K15 or opal lay-in diffuser.

ARMW218x	2/18w	600mm	(nom)
ARMW318x	3/18w	600mm	(nom)
ARMW418x	4/18w	600mm	(nom)
ARMW236x	2/36w	1200mm	(nom)
ARMW336x	3/36w	1200mm	(nom)
ARMW436x	4/36w	1200mm	(nom)

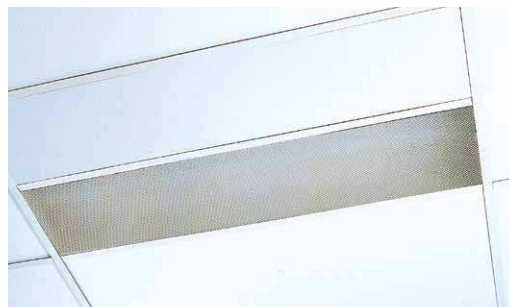
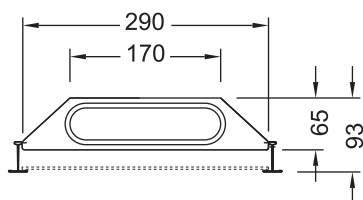


Recessed Diffused T/Bar T5

Armstrong Budget Recessed T/Bar

For recessed T/Bar ceilings. x designates diffuser type. K12, K15 or opal lay-in diffuser.

ARM214T5x	2/14w	600mm	(nom)
ARM224T5x	2/24w	600mm	(nom)
ARM228T5x	2/28w	1200mm	(nom)
ARM254T5x	2/54w	1200mm	(nom)



For recessed T/Bar ceilings. x designates diffuser type. K12, K15 or opal lay-in diffuser.

ARM114T5x	1/14w	600mm	(nom)
ARM128T5x	1/28w	1200mm	(nom)

