



# FSU & FNU system

galvanised steel pvc  
or nylon coated

## CONDUIT

### FSU

**Construction:** Galvanised steel, helically wound, flexible conduit with pvc coating. Colour black. Grey or orange on request.\*

**Typical Applications:** General factory wiring and connections to machines.

### FNU

**Construction:** Galvanised steel, helically wound, flexible conduit with elastomeric nylon coating. Colour black.

**Typical Applications:** Demanding applications requiring higher temperatures or solvent and abrasion resistance.

## FITTINGS

### M

**fixed external thread nickel plated brass**

Two part fitting comprising shell and body with external thread. This fitting can be inserted into a knockout and secured with a locknut.

### S

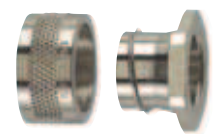
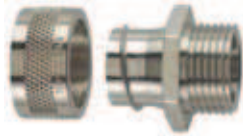
**swivel external thread nickel plated brass**

Two part fitting comprising shell and body. The external thread swivels about the main body. Can be used with threaded entries, or knockout secured with a locknut.

### P

**plain hole connector nickel plated brass**

Two part fitting comprising shell and body without thread. The body is fitted through the opposite side of the entry to the conduit and acts as a locking device also providing a smooth entry bush.



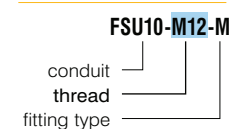
nominal size (mm)	FSU		FNU		outside dia (mm)	inside dia (mm)	min inside bend radius (mm)	metric thread part number	PG thread part number	metric thread part number	PG thread part number	hole size (mm)	part number
	part number	reel length (m)	part number	reel length (m)									
10	FSU10B <sup>+</sup>	25, 50			10.0	6.8	25	FSU10-M12-M	FSU10-PG7-M	FSU10-M12-S	FSU10-PG7-S	9	FSU10-P
12	FSU12B	25, 50			14.0	10.2	30	FSU12-M16-M	FSU12-PG9-M	FSU12-M16-S	FSU12-PG9-S	12	FSU12-P
16	FSU16B	10, 25, 50	FNU16B	25	17.0	13.0	40	FSU16-M16-M	FSU16-PG11-M	FSU16-M16-S	FSU16-PG11-S	16	FSU16-P
16								FSU16-M20-M		FSU16-M20-S	FSU16-PG13-S		
20	FSU20B	10, 25, 50	FNU20B	25	21.5	16.9	45	FSU20-M20-M	FSU20-PG16-M	FSU20-M20-S	FSU20-PG16-S	20	FSU20-P
25	FSU25B	10, 25, 50	FNU25B	25	26.0	21.1	55	FSU25-M25-M	FSU25-PG21-M	FSU25-M25-S	FSU25-PG21-S	25	FSU25-P
32	FSU32B	10, 25	FNU32B	10	34.0	28.1	60	FSU32-M32-M	FSU32-PG29-M	FSU32-M32-S	FSU32-PG29-S	32	FSU32-P
40	FSU40B	10, 25			44.5	37.6	80	FSU40-M40-M	FSU40-PG36-M	FSU40-M40-S	FSU40-PG36-S	40	FSU40-P
50	FSU50B	10, 25			55.0	48.4	90	FSU50-M50-M	FSU50-PG48-M	FSU50-M50-S	FSU50-PG42-S	51	FSU50-P
63	FSU63B	10			64.5	57.5	115	FSU63-M63-M		FSU63-M63-S		61	FSU63-P
75	FSU75B	10			79.0	70.0	150	FSU75-M75-M				75	FSU75-P

## ORDERING NOTES

- Add reel length eg: FSU20-25M for 25m reel
- FSU fittings used for FNU conduit
- \* Indicates parts made to order on request and may be subject to MOQ and lead time
- + Double interlock section

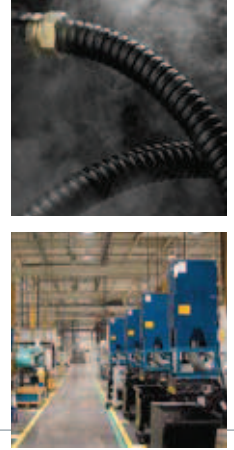
- **Available on request:**
  - low temperature (-40°C) version of FSU
  - longer lengths and bulk packaging
  - cut lengths and assemblies
  - other colours
  - stainless steel fittings (grade 316)
  - alternative threads
  - 45° elbows 16 to 32mm
  - UV resistant version of FSU

### How to read the fittings code



# properties

- High mechanical strength
- Highly flexible
- IP rating: IP54 with standard fittings,  
IP65 with type C compression fittings
- Temperature range -15°C to +70°C (FSU)  
-40°C to +120°C (FNU)
- FNU offers high abrasion resistance and solvent resistance
- Low Fire Hazard version available (see type LFHU on page 24)
- Nickel plated brass fittings



IP54	IP65	IP65	IP65	IP65	IP65
<b>F</b>	<b>C</b>	<b>C-S</b>	<b>C90</b>	<b>coupler</b>	<b>E</b>
<b>fixed internal thread nickel plated brass</b>	<b>external thread nickel plated brass</b>	<b>external thread nickel plated brass</b>	<b>external thread elbow nickel plated brass</b>	<b>nickel plated brass</b>	<b>insert nickel plated brass</b>
Two part fitting comprising shell and body with internal thread which can be used to couple two pieces of conduit together when used with a swivel fitting.	Multipart compression fitting including elastomeric seal. Can be used for knockouts or threaded entries as fitting rotates until tightened.	Multipart compression fitting including elastomeric seal. The external thread swivels about the main body even after tightening.	Multipart 90° compression fitting including elastomeric seal.	Multi part compression coupler including nylon seals to join 2 conduits.	Single part, machined insert to cap end of conduit.



metric thread part number	metric thread part number	PG thread part number	NPT thread part number	metric thread part number	metric thread part number	part number	part number	nominal size (mm)
	FSU10-M12-C						FSU10-E	10
	FSU12-M16-C	FSU12-PG9-C		FSU12-M16-C-S	FSU12-M16-C90		FSU12-E	12
FSU16-M16-F	FSU16-M16-C	FSU16-PG11-C	FSU16-050-C	FSU16-M16-C-S	FSU16-M16-C90		FSU16-E	16
FSU16-M20-F	FSU16-M20-C	FSU16-PG13-C		FSU16-M20-C-S	FSU16-M20-C90		FSU16-E	16
FSU20-M20-F	FSU20-M20-C	FSU20-PG16-C	FSU20-050-C	FSU20-M20-C-S	FSU20-M20-C90	FSU20-FSU20	FSU20-E	20
FSU25-M25-F	FSU25-M25-C	FSU25-PG21-C	FSU25-075-C	FSU25-M25-C-S	FSU25-M25-C90	FSU25-FSU25	FSU25-E	25
FSU32-M32-F	FSU32-M32-C	FSU32-PG29-C	FSU32-100-C	FSU32-M32-C-S	FSU32-M32-C90		FSU32-E	32
	FSU40-M40-C						FSU40-E	40
	FSU50-M50-C						FSU50-E	50
							FSU63-E	63
							FSU75-E	75

## STANDARDS

BS EN IEC 61386



## TECHNICAL DRAWING

