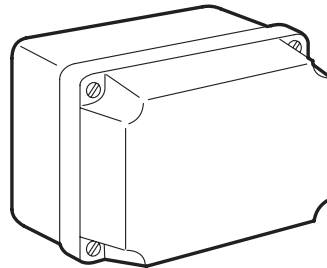


Deep plastic industrial equipment boxes

Catalogue number(s) : 0 921 22 - 0 922 84 - 0 350 43/54/58



1. GENERAL CHARACTERISTICS

Weatherproof deep industrial equipment boxes with smooth sides.
Opaque cover
1/4 turn fixing for 0 921 22 and 0 922 84 boxes, or 1/4 turn with hinges for the rest of the range.
Colour : Grey RAL 7035.

2. MATERIAL CHARACTERISTICS

	Box	Cover	Seal	1/4 turn shaft
0 921 22 0 922 84 0 350 43 0 350 54 0 350 58	ABS	ABS	Rubber	PA

1/4 turn spring and stop: stainless steel.
Good resistance to UV, corrosion, saline mist, oils and greases.

3. TECHNICAL CHARACTERISTICS

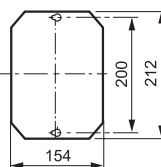
- Protection index : IP 55 IK 07 for 220 x 170 boxes
IP 55 IK 08 for the rest of the range.
- Glow wire flammability : 960°C according to NFC EN 60695-2-1
- Operating temperature : - 20°C to + 50°C.
- Box fixing possibilities :
 - Inside : 4 oblong holes at the back of the box
 - Outside cabling volume at the four corners with Ø 4 screws.
 - With Cat. No. 0 364 08 wall-mounting brackets for 310 x 240 boxes.
- Option of mounting equipment on rail or on plain plates at the back of the box.
- 1/4 turn opening/closing with a flat head screwdriver.
- Open/closed position indicator : I/O on 220 x 170 boxes

4. ACCESSORIES

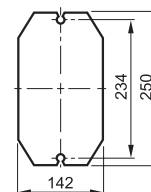
Metal mounting plates - 15/10 thick

- Boxes
- Cat. No. 0 350 90 220 x 170 mm
 - Cat. No. 0 350 92 265 x 174 mm
 - Cat. No. 0 350 93 310 x 240 mm
 - Cat. No. 0 350 94 359 x 265 mm

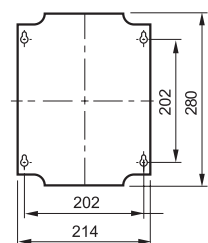
Cat. No. 0 350 90



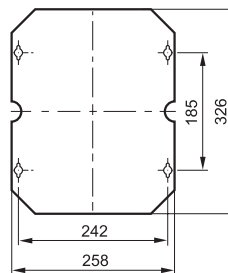
Cat. No. 0 350 92



Cat. No. 0 350 93

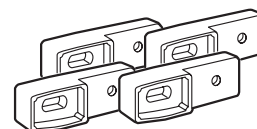


Cat. No. 0 350 94



Wall-mounting brackets

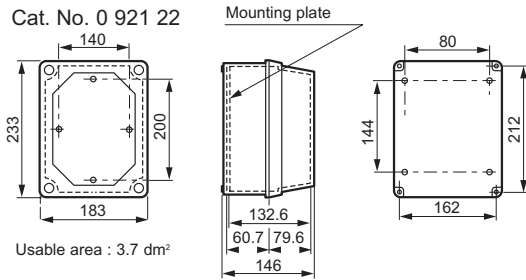
Cat. No. 0 364 08 Set of 4 brackets for 310 x 240 boxes



5. OVERALL DIMENSIONS

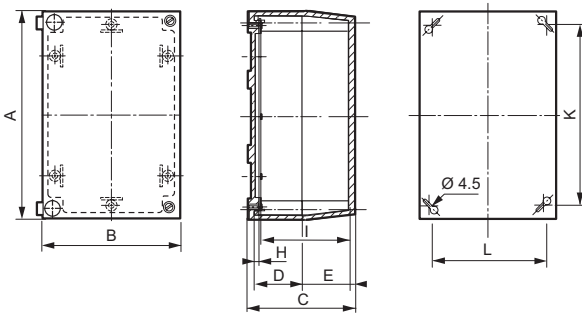
Boxes

Cat. No. 0 921 22



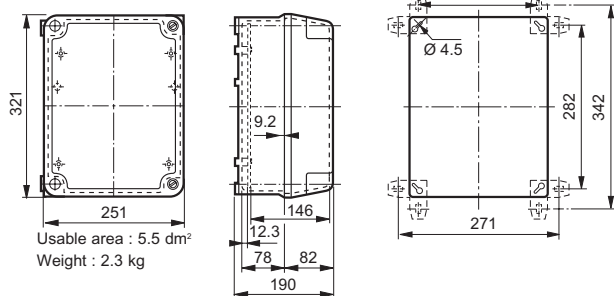
Usable area : 3.7 dm²

Cat. No. 0 350 43/58



Boxes Cat. No.	Dimensions								Area (dm ²)	Weight (kg)	
	A (mm)	B (mm)	C (mm)	D (mm)	E (mm)	H (mm)	I (mm)	Box fixing K (mm)			L (mm)
0 350 43	273	182	165	62	92	3.8	148.5	246	155	3.5	1.08
0 350 58	367	273	165	62	92	3.8	148.5	340	246	9.0	1.80

Cat. No. 0 350 54 and Cat. No. 0 955 84



Usable area : 5.5 dm²
Weight : 2.3 kg