



## Universal DD - Zinc Coated Steel Double Door Enclosures - IP55

### **Index**

[Dimension Sheet](#)

[Catalogue Information](#)

[Leaflet](#)

### **Web Links**

[Universal DD Information Page](#)

[Ask a question / Send us an enquiry](#)

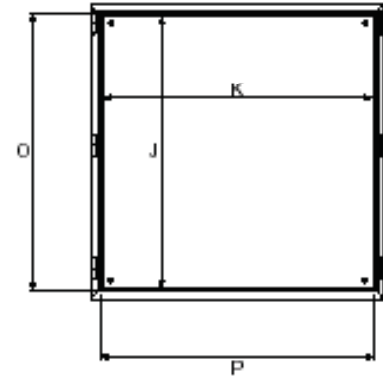
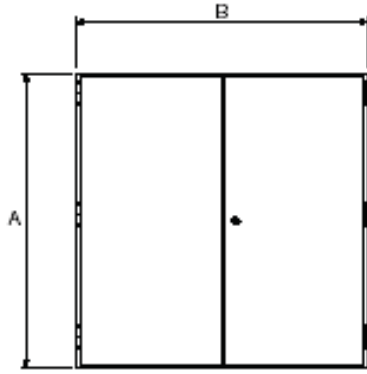
[Information about B&R](#)

[Local Sales Team Phone Numbers](#)

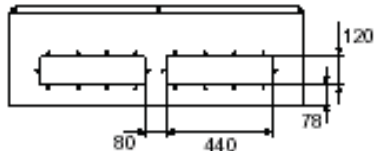


DIMENSION SHEET

# UNIVERSAL DD



DIMENSI



| Catalogue Number | External Dimensions |      |     |     | Internal Depth |     | Mounting Pan |      | Opening Size |      | No of Locks |
|------------------|---------------------|------|-----|-----|----------------|-----|--------------|------|--------------|------|-------------|
|                  | A                   | B    | C   | D   | E              | F   | J            | K    | O            | P    | NG          |
| DD10103          | 1000                | 1000 | 300 | 274 | 297            | 230 | 940          | 915  | 945          | 920  | 1           |
| DD12103          | 1200                | 1000 | 300 | 274 | 297            | 230 | 1140         | 915  | 1145         | 920  | 1           |
| DD12124          | 1200                | 1200 | 400 | 374 | 397            | 330 | 1140         | 1115 | 1145         | 1120 | 2           |
| DD16104          | 1600                | 1000 | 400 | 374 | 397            | 330 | 1350         | 915  | 1355         | 920  | 1           |
| DD16124          | 1600                | 1200 | 400 | 374 | 397            | 330 | 1350         | 1115 | 1355         | 1120 | 2           |
| DD18104          | 1800                | 1000 | 400 | 374 | 397            | 330 | 1740         | 915  | 1745         | 920  | 1           |
| DD18124          | 1800                | 1200 | 400 | 374 | 397            | 330 | 1740         | 1115 | 1745         | 1120 | 2           |
| DD20104          | 2000                | 1000 | 400 | 374 | 397            | 330 | 1940         | 915  | 1945         | 920  | 1           |
| DD20124          | 2000                | 1200 | 400 | 374 | 397            | 330 | 1940         | 1115 | 1945         | 1120 | 2           |
| DD18125          | 1800                | 1200 | 500 | 474 | 497            | 430 | 1740         | 1115 | 1745         | 1120 | 2           |
| DD20125          | 2000                | 1200 | 500 | 474 | 497            | 430 | 1940         | 1115 | 1945         | 1120 | 2           |

ION SHEET

DIMENSION SHEET



# Universal DD - Zinc Coated Steel

## Double Door Enclosure Range - IP55

brenclosures.com.au/ddzs.htm



### Universal DD Features

- Full access to install the mounting pan and maintain equipment
- Robust three point locking system
- Adjustable mounting pan with installation support rails
- Approvals
  - CE marked
  - Lloyds
- Materials
  - Body - zinc coated steel
  - Body thickness - 1.6mm
  - Gasket - polyurethane
- Surface finish - powdercoated
- Protection rating - IP55



The Universal DD is an IP55, double door, general purpose enclosure for industrial or demanding conditions. As it has no centre mullion, it

is extremely easy to access all equipment mounted on the included mounting pan.

### Inclusions

Steel mounting pan, gland plate (fitted internally or externally), 7 mm square turnbuckle lock (DD020) on units below 1600 mm high and lockable 'L' handles (DD050) on others, door rails, earth strap kit.

### Universal DD Selection Guide

| Catalogue No | Dimensions (mm) |       |       |               | Mounting Pan (mm) |       |     | No of Gland Plates | Weight (kg) |
|--------------|-----------------|-------|-------|---------------|-------------------|-------|-----|--------------------|-------------|
|              | Height          | Width | Depth | Usable Depth* | Height            | Width | Thk |                    |             |
| DD10103      | 1000            | 1000  | 300   | 250           | 940               | 915   | 2   | 1                  | 66.7        |
| DD12103      | 1200            | 1000  | 300   | 250           | 1140              | 915   | 2   | 1                  | 77.7        |
| DD16104      | 1600            | 1000  | 400   | 350           | 1540              | 915   | 2   | 1                  | 107.7       |
| DD18104      | 1800            | 1000  | 400   | 350           | 1740              | 915   | 2   | 1                  | 119.3       |
| DD20104      | 2000            | 1000  | 400   | 350           | 1940              | 915   | 2   | 1                  | 131.0       |
| DD12124      | 1200            | 1200  | 400   | 350           | 1140              | 1115  | 2   | 2                  | 98.0        |
| DD16124      | 1600            | 1200  | 400   | 350           | 1540              | 1115  | 2   | 2                  | 124.9       |
| DD18124      | 1800            | 1200  | 400   | 350           | 1740              | 1115  | 2   | 2                  | 138.4       |
| DD20124      | 2000            | 1200  | 400   | 350           | 1940              | 1115  | 2   | 2                  | 151.8       |
| DD18125      | 1800            | 1200  | 500   | 450           | 1740              | 1115  | 2   | 2                  | 147.4       |
| DD20125      | 2000            | 1200  | 500   | 450           | 1940              | 1115  | 2   | 2                  | 161.4       |

\* Mounting pan to underside of door

## Universal DD Accessories

| Product                          | Description                | Catalogue No | DD10103 | DD12103 | DD12124 | DD16104 | DD16124 | DD18104 | DD18124 | DD18125 | DD20104 | DD20124 | DD20125 |
|----------------------------------|----------------------------|--------------|---------|---------|---------|---------|---------|---------|---------|---------|---------|---------|---------|
|                                  |                            |              |         |         |         |         |         |         |         |         |         |         |         |
| Rainhood                         | 30 mm high                 | DDRH103      | •       | •       |         |         |         |         |         |         |         |         |         |
|                                  | 30 mm high                 | DDRH104      |         |         |         | •       |         | •       |         |         | •       |         |         |
|                                  | 30 mm high                 | DDRH124      |         |         | •       |         | •       |         | •       |         |         | •       |         |
|                                  | 30 mm high                 | DDRH125      |         |         |         |         |         |         |         | •       |         |         | •       |
| Plinth - galvanised channel iron | 75 x 1000 x 255 mm         | DDCIP103     | •       | •       |         |         |         |         |         |         |         |         |         |
|                                  | 75 x 1000 x 355 mm         | DDCIP104     |         |         |         | •       |         | •       |         |         | •       |         |         |
|                                  | 75 x 1200 x 355 mm         | DDCIP124     |         |         | •       |         | •       |         | •       |         |         | •       |         |
|                                  | 75 x 1200 x 455 mm         | DDCIP125     |         |         |         |         |         |         |         | •       |         |         | •       |
| Vent kit - external              | 130 x 130 mm               | IPVK         | •       | •       | •       | •       | •       | •       | •       | •       | •       | •       | •       |
| Eye bolt                         | 125kg per bolt (pack of 2) | LEB/12       | •       | •       | •       | •       | •       | •       | •       | •       | •       | •       | •       |
| Gland plate - split              | 2mm Zinc coated steel      | DDSGP        | •       | •       | •       | •       | •       | •       | •       | •       | •       | •       | •       |
| Light kit                        | 1000mm wide                | DDLTK10      | •       | •       |         | •       |         | •       |         |         | •       |         |         |
|                                  | 1200mm wide                | DDLTK12      |         |         | •       |         | •       |         | •       | •       |         | •       | •       |

## Universal DD Locks

| Product    | Description     | Catalogue No | Standard Lock/Insert          | Alternative insert | Keys             |                |                  |
|------------|-----------------|--------------|-------------------------------|--------------------|------------------|----------------|------------------|
|            |                 |              |                               |                    | Lockable handles | Plastic, 3-way | Aluminium, 3-way |
| Turnbuckle | chromed steel   | DD020*       | 7 mm square - steel*          | See below          |                  | SKU            | SKZ              |
|            | powdercoated    | DD020/PS     | 7 mm square - stainless steel | See below          |                  | SKU            | SKZ              |
|            | stainless steel | DD020/S      | 7 mm square - stainless steel | See below          |                  | SKU            | SKZ              |
| Wing knob  | lockable        | DD030        | Key code 92268                | –                  | SK3              |                |                  |
|            | non-lockable    | DD111        | –                             | –                  |                  |                |                  |
| T handle   | lockable        | DD040        | Key code 92268                | –                  | SK3              |                |                  |
| L handle   | lockable        | DD050        | Key code 92268                | –                  | SK3              |                |                  |
|            | padlockable     | DD052        | –                             | –                  |                  |                |                  |

## Locks Inserts for DD020 Locks

| To suit lock style       | Description                 | To suit turnbuckle lock | Standard Insert               | 3mm double bit pin |                 | 8mm square |                 | 8mm triangle |                 |
|--------------------------|-----------------------------|-------------------------|-------------------------------|--------------------|-----------------|------------|-----------------|--------------|-----------------|
|                          |                             |                         |                               | Steel              | Stainless Steel | Steel      | Stainless Steel | Steel        | Stainless Steel |
| Turnbuckle               | chromed steel               | DD020*                  | 7 mm square - steel*          | LKINS3P            |                 | LKINS8S    |                 | LKINS8T      |                 |
|                          | powdercoated with SS insert | DD020/PS                | 7 mm square - stainless steel | LKINS3P            | LKINS3P/S       | LKINS8S    | LKINS8S/S       | LKINS8T      | LKINS8T/S       |
|                          | stainless steel             | DD020/S                 | 7 mm square - stainless steel |                    | LKINS3P/S       |            | LKINS8S/S       |              | LKINS8T/S       |
| Key required - aluminium |                             |                         | SKZ                           | SKZ                | SKZ             | SK8        | SK8             | SKZ          | SKZ             |
| Key required - plastic   |                             |                         | SKU                           | SKU                | SKU             | –          | –               | SKU          | SKU             |

\* Standard

# Universal DD

## Double Door Enclosure Range - IP55



The Universal DD is an IP55, double door general purpose enclosure for industrial or demanding conditions. As it has no centre mullion, it is extremely easy to access all equipment mounted on the included mounting pan. Zincaneal® steel is used for the construction to ensure a long life even in the most arduous of conditions.

Typical installations are for industrial automation and process control applications.

### Size Range Summary

| Model  | DD10103 | DD12103 | DD16104 | DD18104 | DD20104 | DD12124 |
|--------|---------|---------|---------|---------|---------|---------|
| Height | 1000    | 1200    | 1600    | 1800    | 2000    | 1200    |
| Width  | 1000    | 1000    | 1000    | 1000    | 1000    | 1200    |
| Depth  | 300     | 300     | 400     | 400     | 400     | 400     |

| Model  | DD16124 | DD18124 | DD20124 | DD18125 | DD20125 |
|--------|---------|---------|---------|---------|---------|
| Height | 1600    | 1800    | 2000    | 1800    | 2000    |
| Width  | 1200    | 1200    | 1200    | 1200    | 1200    |
| Depth  | 400     | 400     | 400     | 500     | 500     |

### Inclusions

Gloss white mounting pan, gland plate (fitted internally or externally), 7 mm square turnbuckle lock (DD020) on units below 1600 mm high and lockable 'L' handles (DD050) on others, earth strap kit.

### Accessories Summary

Rainhood, channel iron plinth, vent kits, internal light kits, lifting bolts, split gland plates, climate control equipment and various lock options.

### Universal DD Features

- Protection rating of IP55 certified by NATA to ensure protection against dust and water intrusion
- Zincaneal® steel, corrosion resistant construction with a ripple powdercoated paint finish for extra durability in the harsh Australian climate
- Full access to install the mounting pan and maintain equipment
- Removable back allows access to the back of the mounting pan or back-to-back installations
- Robust three point locking system which includes stainless steel inserts
- Adjustable mounting pan made with special support rails intended to make installation changes efficiently
- Gutter system that helps extend the life of the gasket whilst preventing water from entering the enclosure
- Earthing strap supplied for additional safety
- Optional viewing window for monitoring equipment operation

### Approvals

CE marked  
Lloyds

### Materials

Body - Zincaneal® steel  
Body Thickness - 1.6mm  
Gasket - Polyurethane

Surface Finish - Powdercoat  
RAL7032

Protection Rating - IP55

### Guides

Material selection - page 290

### Also of interest

Smaller sizes - page 62  
Stainless Steel - page 98  
Higher IP rating - page 70

### Drawing

Page 268

## Universal DD Enclosures & Dimensions

| Model   | Dimensions (mm) |       |       | Mounting Pan (mm) |       |     | No. Gland Plates | Usable Depth* (mm) | Weight (kg) |
|---------|-----------------|-------|-------|-------------------|-------|-----|------------------|--------------------|-------------|
|         | Height          | Width | Depth | Height            | Width | Thk |                  |                    |             |
| DD10103 | 1000            | 1000  | 300   | 940               | 915   | 2   | 1                | 250                | 66.7        |
| DD12103 | 1200            | 1000  | 300   | 1140              | 915   | 2   | 1                | 250                | 77.7        |
| DD16104 | 1600            | 1000  | 400   | 1540              | 915   | 2   | 1                | 350                | 107.7       |
| DD18104 | 1800            | 1000  | 400   | 1740              | 915   | 2   | 1                | 350                | 119.3       |
| DD20104 | 2000            | 1000  | 400   | 1940              | 915   | 2   | 1                | 350                | 131.0       |
| DD12124 | 1200            | 1200  | 400   | 1140              | 1115  | 2   | 2                | 350                | 98.0        |
| DD16124 | 1600            | 1200  | 400   | 1540              | 1115  | 2   | 2                | 350                | 124.9       |
| DD18124 | 1800            | 1200  | 400   | 1740              | 1115  | 2   | 2                | 350                | 138.4       |
| DD20124 | 2000            | 1200  | 400   | 1940              | 1115  | 2   | 2                | 350                | 151.8       |
| DD18125 | 1800            | 1200  | 500   | 1740              | 1115  | 2   | 2                | 450                | 147.4       |
| DD20125 | 2000            | 1200  | 500   | 1940              | 1115  | 2   | 2                | 450                | 161.4       |

\* Mounting pan to underside of door



## Universal DD Accessories

### Rainhoods

Rainhoods are designed to shed water from the top of the enclosure, and to prevent water from pooling on the enclosure top.

| Catalogue Number | To suit enclosure Width x Depth (mm) | Dimensions (mm) |       | Slope Angle (degrees) |
|------------------|--------------------------------------|-----------------|-------|-----------------------|
|                  |                                      | Width           | Depth |                       |
| DDRH103          | 1000x300                             | 1000            | 314   | 1.8                   |
| DDRH104          | 1000x400                             | 1000            | 414   | 1.4                   |
| DDRH124          | 1200x400                             | 1200            | 414   | 1.4                   |
| DDRH125          | 1200x500                             | 1200            | 514   | 1.1                   |

### Channel Iron Plinth - 75 mm

Rugged hot dip galvanised channel iron construction for corrosion protection. Provides a robust 75mm high, floor mounting option for the Universal DD range.

| Catalogue Number | To suit enclosure Width x Depth (mm) | Dimensions (mm) |       |
|------------------|--------------------------------------|-----------------|-------|
|                  |                                      | Width           | Depth |
| DDCIP103         | 1000x300                             | 1000            | 255   |
| DDCIP104         | 1000x400                             | 1000            | 355   |
| DDCIP124         | 1200x400                             | 1200            | 355   |
| DDCIP125         | 1200x500                             | 1200            | 455   |



### External Vent Kit

Ensures that the enclosure does not become excessively hot by allowing natural circulation of air. The vent kit includes a gasket, insert filter and fittings. Note that by the nature of this item, the enclosure will then not be rated to IP55.

| Catalogue Number | Description                     | Dimensions                           |
|------------------|---------------------------------|--------------------------------------|
| IPVK             | External Vent Kit - Pebble Grey | 130 x 130mm (suits cutout 80 x 80mm) |



Non-metallic

General Purpose

Stainless Steel

Mining & Hazardous

Switchboard Building

Datatables

Climate Control

Technical Drawings

Enclosure Selection

## Universal DD Accessories (continued)

### Climate Control

B&R supply a wide variety of climate control equipment to suit almost any application. For full details please see the climate control section of this catalogue starting on page 188. The below shows typical selections only.

| Catalogue Number | Description  | Dimensions (mm) |       |       | Power (W) |
|------------------|--|-----------------|-------|-------|-----------|
|                  |  | Height          | Width | Depth |           |
| TX-FAN23BN0A     | Fan – External, Output 110m <sup>3</sup> /h            | 250             | 250   | 111   | 20        |
| TX-FAN25BN0A     | Fan – External, Output 230m <sup>3</sup> /h            | 250             | 250   | 119   | 56        |
| TX-FAN35BN0A     | Fan – External, Output 550m <sup>3</sup> /h            | 325             | 325   | 151   | 90        |
| TX-FIL25XN0A     | Filter – Suits 110 or 230m <sup>3</sup> /h output fan  | 250             | 250   | 30    | —         |
| TX-FIL35XN0A     | Filter – Suits 550m <sup>3</sup> /h output fan         | 325             | 325   | 30    | —         |
| TX-EGO10BM1A     | Air Conditioner – Side mounted, 1050W cooling capacity | 783             | 348   | 213   | 570       |
| TX-MIX36BX0A     | Heat Exchanger (air-air) – Side mounted 36W/K cooling  | 771             | 316   | 93    | 140       |



### Light Kits

For safety and to ensure easy installation and maintenance of equipment. The light kit comes complete with on-off switch, bracket, rail and all fittings required for installation.

| Catalogue Number | Description                                      |
|------------------|--|
| DDLTK10          | Light kit suitable for 1000 mm wide DD enclosure |
| DDLTK12          | Light kit suitable for 1200 mm wide DD enclosure |

### Lifting Eye Bolt

For ease of installation, lifting eye bolts ensure that the enclosure is not damaged when lifted, and is moved safely.

| Catalogue Number | Description      | Pack Quantity |
|------------------|------------------|---------------|
| LEB/12           | Lifting Eye Bolt | 2             |



### Split Gland Plate

For ease of installation, especially when using a plinth mounting, a split gland plate can ensure that access to cable glands and cabling is always available.

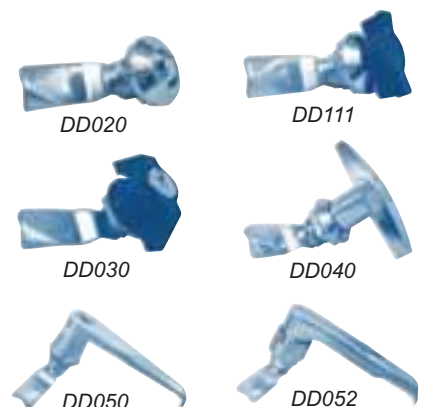
| Catalogue Number | Description       |
|------------------|-------------------|
| DDSGP            | Split Gland Plate |

### Locks

For security and ease of opening, the following locks for the Universal DD enclosure are available.

| Catalogue Number | Description                                   |
|------------------|---|
| DD020            | Turnbuckle lock*                              |
| DD111            | Wing Knob - non-lockable                      |
| DD030            | Wing Knob - lockable and keyed to code 92268  |
| DD040            | "T" Handle - lockable and keyed to code 92268 |
| DD050            | "L" Handle - lockable and keyed to code 92268 |
| DD052            | "L" Handle - padlockable                      |

\* For available lock inserts, see page 65





SPECIAL PURPOSE

# UNIVERSAL DD

Water is prevented from entering the enclosure on opening by a high capacity guttering system

Door rails included for flexible equipment mounting

Three point locking for safety and to ensure correct sealing on the facing door



Corrosion resistant 1.6 mm thick zinc coated steel with powdercoat paint finish

The Universal DD is an IP55, double door general purpose enclosure. It is extremely easy to access all equipment mounted on the included mounting pan, as it has no centre mullion to get in the way.

The Universal DD range includes a mounting pan, door rails, removable back, earth strap kit and gland plates. This makes for an easy installation of electrical components typically in industrial automation and process control type applications.

The mounting pan is fitted to a special support rail system, which allows its position in the enclosure to be altered to suit the application. This can help particularly when more cabling room is required behind the pan.

Zinc coated steel is used for the construction to ensure a long life even in the most arduous of conditions.

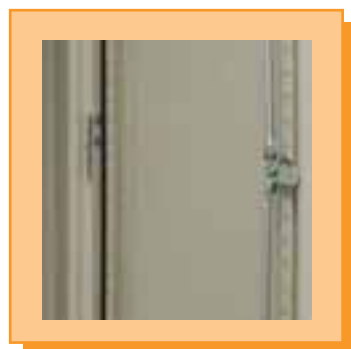
Contact your local B&R office for details  
[www.brenclosures.com.au](http://www.brenclosures.com.au)



## TECHNICAL INFORMATION



| Model   | Dimensions (mm) |       |       |                  | Mounting Pan Size (mm) |       |       |
|---------|-----------------|-------|-------|------------------|------------------------|-------|-------|
|         | Height          | Width | Depth | Max Usable Depth | Height                 | Width | Thick |
| DD10103 | 1000            | 1000  | 300   | 250              | 940                    | 915   | 2     |
| DD12103 | 1200            | 1000  | 300   | 250              | 1140                   | 915   | 2     |
| DD12124 | 1200            | 1200  | 400   | 350              | 1140                   | 1115  | 2     |
| DD16104 | 1600            | 1000  | 400   | 350              | 1540                   | 915   | 2     |
| DD16124 | 1600            | 1200  | 400   | 350              | 1540                   | 1115  | 2     |
| DD18104 | 1800            | 1000  | 400   | 350              | 1740                   | 915   | 2     |
| DD18124 | 1800            | 1200  | 400   | 350              | 1740                   | 1115  | 2     |
| DD20104 | 2000            | 1000  | 400   | 350              | 1940                   | 915   | 2     |
| DD20124 | 2000            | 1200  | 400   | 350              | 1940                   | 1115  | 2     |
| DD18125 | 1800            | 1200  | 500   | 450              | 1740                   | 1115  | 2     |
| DD20125 | 2000            | 1200  | 500   | 450              | 1940                   | 1115  | 2     |



## SPECIAL FEATURES

- NATA tested to IP55 protection rating
- Corrosion resistant 1.6mm thick zinc coated steel with powdercoat paint finish (also available in 316 stainless steel)
- Door rails included for flexible equipment mounting
- Three point locking for safety and to ensure correct sealing
- Robust mounting pan supplied with full depth adjustment in 25 mm increments
- Easy mounting pan fitting on specially designed support rails
- Water is prevented from entering the enclosure on opening by a high capacity guttering system
- Earth strap kit included for additional safety
- Viewing windows are available on request

## ACCESSORIES GUIDE

| Model   | Accessories |             |          |               |             |       |            |
|---------|-------------|-------------|----------|---------------|-------------|-------|------------|
|         | Rainhood    | Base Plinth | Vent Kit | Lifting Bolts | Split Gland | Locks | Light Kits |
| DD10103 | •           | •           | •        | •             | •           | •     | •          |
| DD12103 | •           | •           | •        | •             | •           | •     | •          |
| DD16104 | •           | •           | •        | •             | •           | •     | •          |
| DD18104 | •           | •           | •        | •             | •           | •     | •          |
| DD20104 | •           | •           | •        | •             | •           | •     | •          |
| DD12124 | •           | •           | •        | •             | •           | •     | •          |
| DD16124 | •           | •           | •        | •             | •           | •     | •          |
| DD18124 | •           | •           | •        | •             | •           | •     | •          |
| DD20124 | •           | •           | •        | •             | •           | •     | •          |
| DD18125 | •           | •           | •        | •             | •           | •     | •          |
| DD20125 | •           | •           | •        | •             | •           | •     | •          |

## SALES OFFICES

Queensland (Brisbane)  
Ph 07 3714 1000

Queensland (Townsville)  
Ph 07 4775 6255

New South Wales (Sydney)  
Ph 02 9687 0077

New South Wales (Newcastle)  
Ph 02 4961 4433

Victoria (Melbourne)  
Ph 03 8588 8400

South Australia (Adelaide)  
Ph 08 8243 1166

Western Australia (Perth)  
Ph 08 9248 9744

Tasmania (Launceston)  
Ph 03 6331 5545

Northern Territory (Darwin)  
Ph 08 8947 0870