

FTA TRIPOD MOUNTS

For Tin and Tile Roofs

The FTA Tripod mounts are a free-standing range of products that are suitable for installation upon tin and tile roof types.

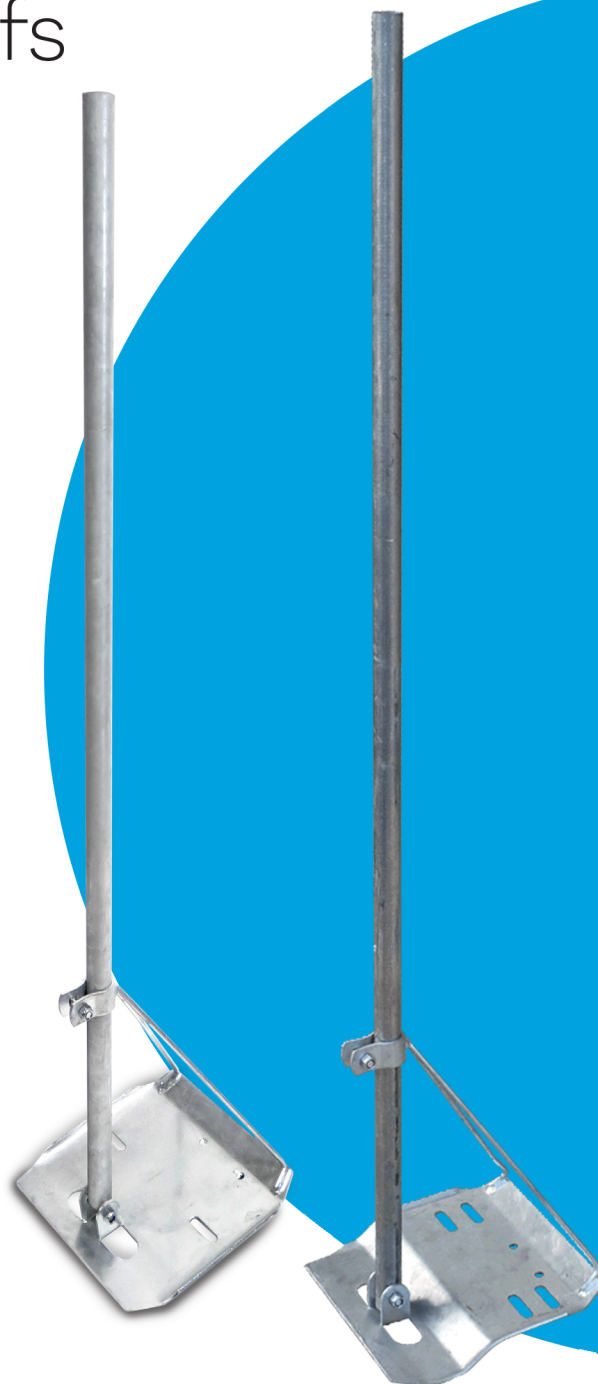
These mounts also include a 1.0m long, 25mm round steel tube mast to provide adequate installation height for metropolitan domestic and commercial free-to-air digital television antennas.

Available surface finish type:

- Natural galvanised compatible for a silver finish range of antennas.

Key features

- Strong all steel materials used
- Unique 2 piece hinging base plate
- Flat pack 6 quantity box
- Hot dipped galvanised for superior corrosion protection
- Only one spanner needed to tighten the mast clamping fasteners



CODE	DESCRIPTION	SURFACE FINISH
BC2844 - 6 PACK	TIN ROOF TRIPOD MOUNT	NATURAL GALVANISED
BC2880 - 6 PACK	TILE ROOF TRIPOD MOUNT	NATURAL GALVANISED

NOTE:

- Products are not supplied with installation fasteners

- Installer to determine based upon installation type