

8 Troubleshooting

PROBLEM	SUGGESTED SOLUTION
The Door Chime is intermittent when activated or sounds when not activated at all.	A door chime with the same frequency may be nearby. Change the channel on your HPM Door Chime (Refer Channel Selection section).
The Door Chime has stopped sounding.	Your Bell Press Unit battery may be flat. If the red indicator light on the Bell Press Unit no longer illuminates when the Bell Press is pressed, replace the Bell Press battery. (Refer Installation section - Bell Press Unit).
If you have checked your Bell Press battery and your Door Chime is still not sounding.	Check the distance between the Chime Unit and the Bell Press Unit. Relocate closer, if they are too far away from each other. Relocate further away, if they are within 1m of each other.
	Check the position of your Chime Unit and Bell Press. Relocate if they are close to a metal structure as it may be interfering with the transmission.
	Ensure Bell Press Unit and Chime Unit have the same Channel selected. (Refer Channel Selection section).
	The Volume Control may be in the OFF position. Move the Volume Control to either LOW or HIGH [D641/PIFL only].

9 Maintenance

Keep the Chime Unit dry. Liquids can damage the electronic circuits inside. To clean, use a damp cloth and mild detergent. Do not use solvents. Do not leave exhausted batteries in the Bell Press Unit or the Chime Unit. Keep the Chime Unit away from dust and dirt, which can prematurely wear parts. Modifying or tampering your HPM Door Chime's internal components can cause a malfunction and will invalidate its Warranty.

Warranty

HPM Legrand warrants this product for a period of 3 years from the date of purchase.

These goods come with guarantees that cannot be excluded under the Australian and New Zealand Consumer Laws. You are entitled to a replacement or a refund for a major failure and for compensation for any other reasonably foreseeable loss or damage. You are also entitled to have the goods repaired if the goods fail to be of acceptable quality and the failure does not amount to a major failure.

See the Warranty card enclosed with this product for further details.

Customer Service

For all Customer Service and Technical Support please call Monday to Friday during business hours.

HPM Legrand Australia
1300 369 777
www.hpm.com.au

HPM Legrand New Zealand
0800 476 009
www.hpm.co.nz

ABN: 31 000 102 661

A Group brand |  **legrand**



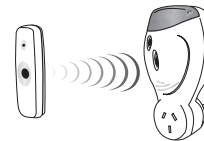
Wireless Door Chime

Plug-in

Cat. D641/PI, D641/PILR, D641/PIFL

Instruction Manual

Please read all instructions carefully before installation and use.



Specifications

Bell press supply voltage:	12V d.c
Transmission freq:	433.92MHz
Range:	Up to 35m [D641/PI] Up to 70m [D641/PIFL and D641/PILR]
Sound level:	70 dB

Battery requirement:

Door chime receiver:	Mains Power
Bell press transmitter:	1 x 12V A23 battery (supplied)

This series of wireless door chimes are not compatible with units from HPM's Cat D642 and D641 series or with D641/B, D641/BLR or D641/BLRCC.

Box contents

- Bell Press
- Door Chime receiver
- 1 x 12V battery
- Mounting screws and wall plugs
- Double-sided tape

1 Features

- Operating range up to 70m [D641/PIFL and D641/PILR]
- 2 melodies for selection
- Weather resistant bell press
- Flashing Light [D641/PIFL only]

2 Typical Applications

- Visitor alert
- Panic button
- Pager

LEI07950AAA

3 Installation

No wiring is required. Ensure both Plug-In Chime Unit (Fig. 1) and Bell Press Unit (Fig. 2) have the same channel selected (Refer Channel Selection section). Positioning the Plug-In Chime Unit or the Bell Press Unit on or near metal structures, frames, furniture or security doors may reduce the transmission range. It is also advisable to separate the units by at least 1 metre. Before permanently fixing the Bell Press Unit in place, test location of both units to ensure satisfactory operation.

Plug-In Chime Unit

No batteries required, simply plug the Plug-In Chime Unit (Fig. 1) in to any standard 240V power point and switch the power point ON. The Plug-In Chime Unit can be moved around to wherever a power point is located. The offset design allows continued use of the adjacent socket of a double power point. The Piggy Back Socket (Fig. 1 A) (available on HPM Cat D641/PILR and D641/PIFL) enables the power outlet to still be used when the Plug-In Chime Unit is plugged in - other appliances may be plugged directly into the Plug-In Chime Unit. The Plug-In Chime Unit is not weatherproof.

Bell Press Unit

Step 1: Remove the security screw at the bottom of the Bell Press Unit. - (Fig. 2 L)

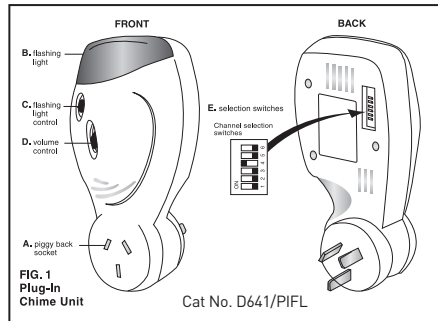
Step 2: Remove the Bell Press (Fig. 2 G) from the Mounting Bracket (Fig. 2 J) . Open the Battery Compartment cover on the back of the Bell Press. Insert 12V battery provided into the Battery Compartment (Fig. 2 K) ensuring that the (+) end of the battery is at the (+) in the Battery Compartment. Replace Battery Compartment cover.

Step 3: Ensure the channel selected is the same as the channel selected on the Plug-In Chime Unit (refer Channel Selection section).

Step 4: Select tune you wish to hear (refer Tune Selection section).

Step 5: Press the Bell Press Button (Fig. 2 I) to ensure that the red indicator light (Fig. 2 H) illuminates, indicating that the battery is correctly installed, and to test satisfactory operation.

Step 6: Secure the Mounting Bracket (Fig. 2 J) using the 2 x screws/ wall plugs or double sided tape provided. To ensure that the weatherproofing is maintained, mount the Bell Press in the upright position. The Bell Press (Fig. 2 G) can then be inserted into the Mounting Bracket (Fig. 2 J) and securely fastened at the bottom using the security screw supplied (Fig. 2 L). The weatherproof Bell Press Unit is suitable for outdoor use. It can also be used as a pager or a panic switch.

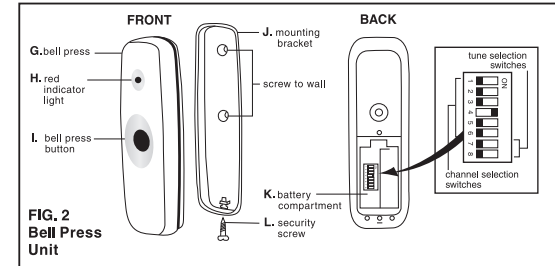


4 Door Chime Operation

Press the Bell Press Button (Fig. 2 I) to sound the Plug-In Chime Unit. Press again to repeat the chime. The operation and range of your HPM Door Chime will depend on location, temperature and battery condition.

5 Channel Selection

Inside the Battery Compartment of both the Bell Press (Fig. 2 K) and the Chime Unit (Fig. 1 F) there are 6 Channel Selection Switches. In the Bell Press, the first 6 switches are the Channel Selection Switches. The last 2 switches are for Tune Selection (Refer Tune Selection section). **It is essential that the Channel Selection Switches be in the same position on both units for them to recognise each other.** In the event that your Door Chime Unit sounds without your Bell Press Unit being used it is likely that another unit operating nearby, using the same frequency channel, is the cause. You will need to select a different channel:



Step 1: On the Bell Press Unit - The Channel Selection Switches are the first 6 switches located inside the Bell Press Battery Compartment (Fig. 2 K). Remove the Bell Press (Fig. 2 G) from the Mounting Bracket (Fig. 2 J). Open the Battery Compartment cover on the back of the Bell Press. Select a different channel by moving one or more of the 6 Channel Selection Switches to the ON position.

Step 2: On the Chime Unit - The Channel Selection Switches are located inside the Battery Compartment (Fig. 1 E). Move the Channel Selection Switches so that they correspond exactly to the Channel Selection Switch positions you have set on the Bell Press Unit. Test to ensure correct operation.

6 Tune Selection

Inside the Battery Compartment of the Bell Press Unit (Fig. 2 K) there is a row of 8 switches. The last 2 switches are for Tune Selection and represent the 2 tunes available - Ding Dong or Westminster. To change the tune, simply select the other Tune Selection Switch. NB. The first 6 switches are the Channel Selection Switches (Refer Channel Selection section).

7 Volume Selection (D641/PIFL only)

The Volume Control (Fig. 1 D) enables you to adjust the volume of your HPM Door Chime (HIGH or LOW) or turn it OFF completely.

8 Flashing Light Selection (D641/PIFL only)

The Flashing Light Control (Fig. 1 C) enables you to have a light (Fig. 1 B) flash when the Door Chime Unit is activated. This can be in addition to or instead of the tune sounding. Simply position the Flashing Light Control (Fig. 1 C) in either the ON or OFF position. Perfect for hearing impaired, families with children, shift workers not wanting to be woken or if there is loud background noise e.g. when vacuuming.