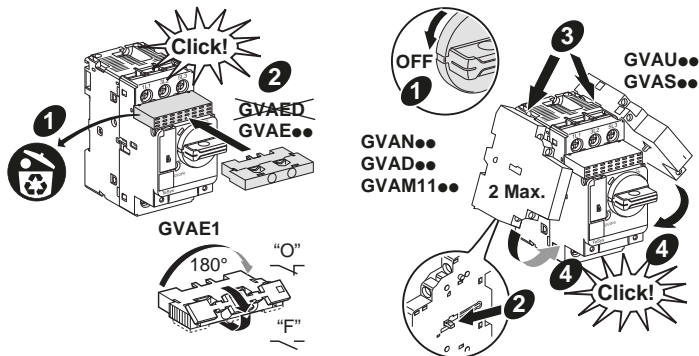
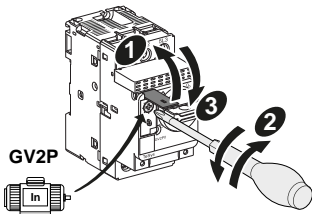
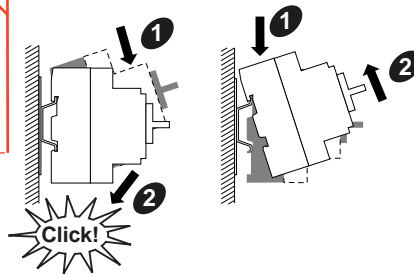
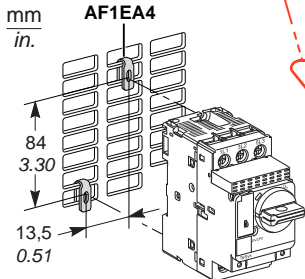


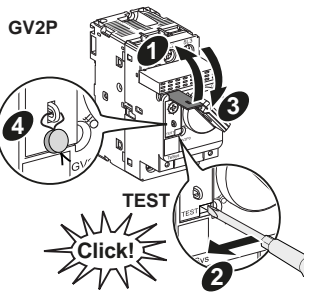
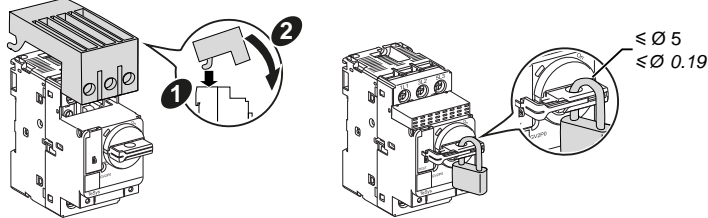


⚠ ⚠ DANGER / PELIGRO / DANGER / 危險	
<p><b>HAZARD OF ELECTRIC SHOCK, EXPLOSION, OR ARC FLASH</b> Disconnect all power before servicing equipment. <b>Failure to follow these instructions will result in death or serious injury.</b></p>	<p><b>PELIGRO DE DESCARGA ELÉCTRICA, EXPLOSIÓN O ARCO ELÉCTRICO</b> Desconecte todas las alimentaciones antes de manipular el producto. <b>Si no se siguen estas instrucciones provocará lesiones graves o incluso la muerte.</b></p>
<p><b>RISQUE D'ÉLECTROCUTION, D'EXPLOSION OU D'ARC ELECTRIQUE</b> Coupez toutes les alimentations avant de travailler sur cet appareil. <b>Le non-respect de ces instructions provoquera la mort ou des blessures graves.</b></p>	<p>可能有触电、爆炸或者电弧灼伤的危險 在此电力设备上工作时 请先切断所有电源。 不遵循上述规定将可能导致人员伤亡。</p>

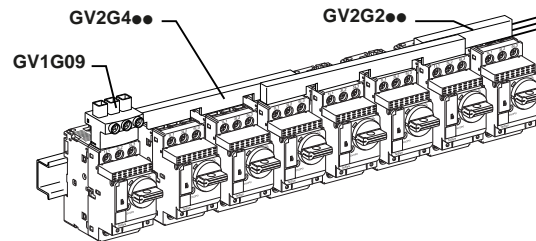




GV2GH7



10 mm	1...6 mm <sup>2</sup>	1,5...6 mm <sup>2</sup>	1...4 mm <sup>2</sup>	1,7 N.m	
0.4 in.	AWG 18...10	AWG 16...10	AWG 18...10	15 lb-in	

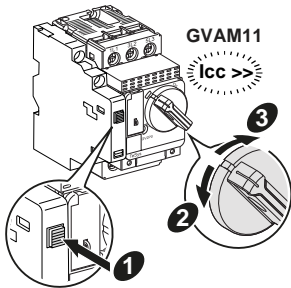


GV2P●●/Le●

Schneider Electric Industries SAS  
35, rue Joseph Monier - CS 30323  
F - 92506 Rueil Malmaison Cedex  
www.se.com/contact

04/2021  
W9 1675463 ..11 A11

© 2021 Schneider Electric - All rights reserved.



Schneider Electric Limited  
Stafford Park 5  
Telford, TF3 3BL  
United Kingdom  
www.se.com/uk

