

How

1. Decide the best position for the switch set and mount it. Be sure to click the switches into the backing plate in the desired order, beforehand.
2. Connect wiring switches as shown in the electrical diagram.
3. Remove the electrical terminal cover on your unit and wire according to the label beside the terminal strip. Once the wires are connected, incoming cable must not be fouled by cover. Remove cut-out portion as required and replace the cover.

Test

Clean the lamp surround and globes with a soft, moist cloth. Check power is switched on and all switches activate properly, according to their marked function.

Spare parts

Electrical switches supplied with this product are usually available from any electrical wholesaler. The central globe can be replaced by 100W maximum R100, screw-in reflector-type globe.

NOTE:

Maximum wattage of central globe is 100W.

Maximum wattage of each heat globe is 275W.

Warranty

The benefits conferred by this warranty are in addition to all implied warranties, other rights and remedies in respect of the product, which the consumer has under the Trade Practices Act and similar state and territory laws.

The original purchaser of this 7500ATP or 7600ATP product, is provided with the following warranty, subject to the following conditions. Clipsal by Schneider Electric warrants this product for a period of three (3) years from the date of purchase for all parts defective in workmanship or materials. All defective parts will be repaired at the point of installation, free of charge. Commercial applications are covered by this warranty and its conditions for 90 days only.

IMPORTANT: RETAIN YOUR RECEIPT

To obtain in-home service under warranty, you must retain your original purchase receipt. Service will otherwise be charged at current rates.

Warranty conditions

1. This warranty is only valid for appliances installed according to the manufacturer's instructions.
2. This appliance must not be modified or changed in any way.
3. All wiring must be carried out by a qualified electrician and must be connected to the voltage requirements as specified in the ratings label.
4. Heater globes supplied with this unit are covered by a separate one (1) year replacement warranty and excluded from the three (3) year in-home warranty. Incandescent globes are excluded from all the above warranties.
5. The manufacturer does not accept liability for any direct or consequent damage, loss or other expense arising from misuse or incorrect installation and operation of the appliance.
6. Warranty will only be given on appliances where proof of purchase is provided, e.g. original invoice.

Made in PRC

Schneider Electric (Australia) Pty Ltd

Contact us: clipsal.com/feedback

National Customer Care Enquiries:

Tel 1300 2025 25

Fax 1300 2025 56

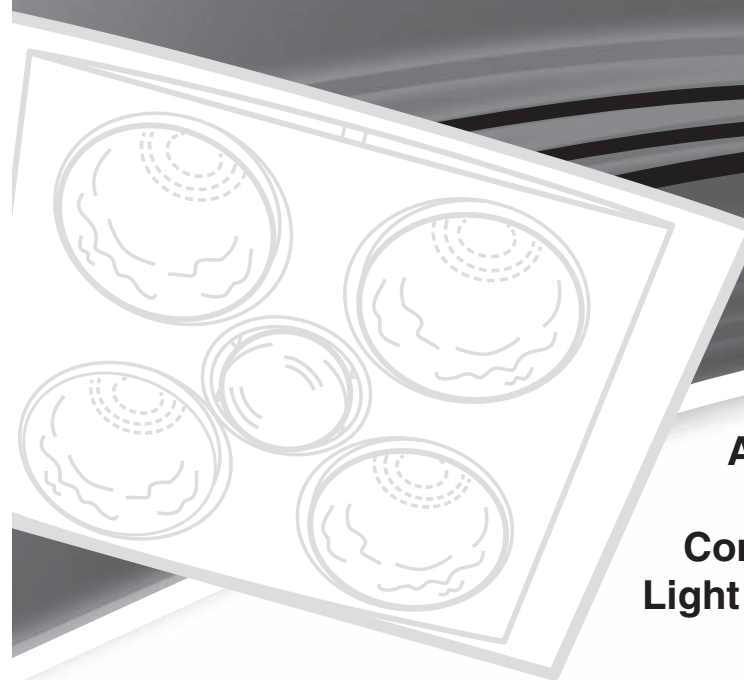
clipsal.com

Schneider Electric (Australia) Pty Ltd reserves the right to change specifications, modify designs and discontinue items without incurring obligation and whilst every effort is made to ensure that descriptions, specifications and other information in this catalogue are correct, no warranty is given in respect thereof and the company shall not be liable for any error therein.

© 2014 Schneider Electric. All Rights Reserved.
Trademarks are owned by Schneider Electric Industries SAS or its affiliated companies.

CLIPSAL[®]

by Schneider Electric



Airflow[®] Sunshine Radiant Globe Combination Heater, Light and Exhaust Fan

7500ATP



Installation Instructions and Warranty

IMPROVED DESIGN now with ceramic lamp holders

Thank you for purchasing this Clipsal by Schneider Electric Airflow product. You can be assured of years of trouble-free operation by installing this product carefully, according to these instructions.

Please read all instructions before commencing installation.

Airflow Sunshine products combine an exhaust fan and light to provide clean air, general lighting and gentle radiant heat in one compact, stylish unit. All functions conveniently switch separately from a supplied switch plate.

This product can be mounted in any room that requires instant, direct, radiant heat to ward off winter chills. The light has a separate switch operation making it suitable for bathrooms, en suites and change rooms.

Suitability

The 7500ATP has been designed especially for cavity ceilings. Flat roof installation is NOT recommended.

The 7500ATP must not be mounted directly over baths or showers, or in areas subject to direct splashing. They must be mounted in the horizontal position only. They are unsuitable for cathedral or raked ceilings.

Where to locate

Radiant globe heaters are not designed to heat entire rooms. They provide instant, concentrated heat to persons standing directly below the heat lamps. Therefore, the units should be located over the area where drying off takes place, not directly over a shower or bath.

Operating time

These heaters are not designed to be left on for extended periods of time, as this could cause overheating and premature failure.

**IMPORTANT:
THESE INSTRUCTIONS ARE ALSO YOUR
INSTALLATION TEMPLATE**

Ceiling insulation

Ceiling insulation should be kept well clear of the unit (at least 100mm). For optimum performance, models with exhaust fans should be installed in areas with good ventilation, to enable fresh air to flow into the room.

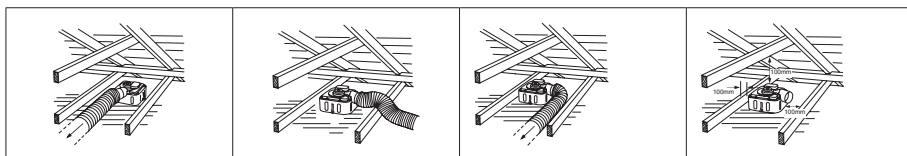
Replacement air

Any restrictions on return air entering the room, or blockages in the ducting that restrict air being exhausted, will impair effectiveness and may contribute to premature failure. Regulations concerning the discharge of air have to be fulfilled.

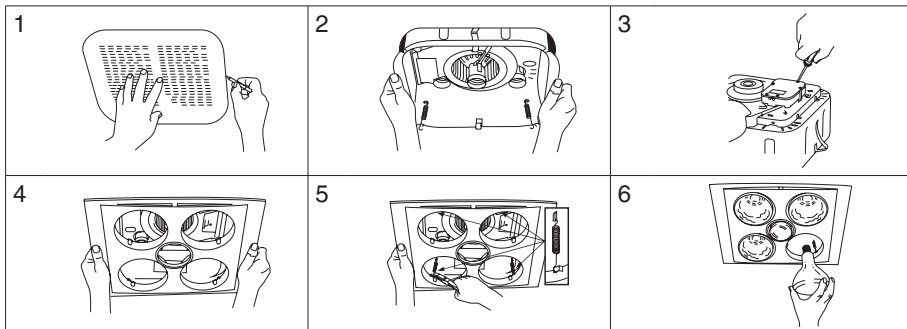
Radiant heat

This unit requires no warm-up period because of its efficient radiant heat globes. Heat is directed at you and not the air. For instant warming, you need to turn them on when you are in the room. They are designed for intermittent operation. Heater globes should not be left on for extended periods of time.

MAJOR CLEARANCES



MOUNTING



Mounting

- Using this card in its open state, as a template, position it in the area you want to place your product and draw around the edges with a pencil to mark the hole cutting size. **BE SURE TO CHECK ABOVE THE CEILING FOR MINIMUM SPACE OF 250mm OR MORE CLEARANCE AND THE LOCATION OF THE CEILING JOISTS.**

IMPORTANT NOTES:

- Do not mount directly below a socket outlet.
 - Ensure you have 250mm clearance to connect the flexible ducting.
 - Ensure there is a minimum of 100mm clear space between the unit and any ceiling insulation.
 - Ensure there is 310mm clearance between the duct side of this unit and any obstructions.
 - The appliance shall, under no circumstances, be covered with insulating (or similar) material.
- Joists, beams and rafters shall not be cut or notched to install the appliance.
 - Use a saw to cut the section along the drawn lines.
 - Remove the two (2) screws and terminal cover to access the terminal block. The 7500ATP uses screw-less spring-type mounting clips to support the product on the ceiling. Before trying to install the product into the hole, unclip the lamp surround from the main body by disconnecting four (4) springs. Remove the lamp surround and the globes to avoid damage from knocks and vibrations. Insert the product through the hole and ensure the spring-type mounting clips support the product on the ceiling.
 - Reattach the lamp surround by reconnecting the four (4) springs. The lamp surround has been designed to position heat globes correctly in the main body. Failure to position the lamp surround correctly may cause heat globes to touch the main body and cause warping. Screw centre light globe into place.

This product is designed to accept only 100W, R100, screw-in reflector-type globes.

- Screw the two (2) large heat globes through the lamp surround holes, tightening firmly to ensure a good electrical contact. Use only 275W globes as supplied with the product.

Important safeguards

This product includes heating functions that generate significant temperatures that can damage people or property if not installed and used correctly.

- Do not touch the heater during or after it has been operating.
- This appliance is not intended for use by persons (including children) with reduced physical, sensory or mental capabilities, or lack of experience and knowledge, unless they have been given supervision or instruction concerning the use of the appliance by a person responsible for their safety.
- Ensure that the switch is in the off position when changing the heat lamp (globe) or light globe.
- Ensure that the wattage of a replacement globe is the same as the globe supplied with the unit.
- Ensure that the grille is free of objects, dust build-up, etc. Make sure that the airflow through the grille is not inhibited.
- The switches or other controls are to be installed such that they cannot be touched by a person in the bath or shower.
- A means of disconnection must be included in the fixed wiring.
- Do not mount close to curtains or other combustible material.
- Children should be supervised to ensure that they do not play with the appliance.

Service and maintenance

There are no user-serviceable parts inside this heater. Contact your local electrician if servicing and maintenance is required.

Regular cleaning is recommended and the lamp surround can be removed and washed using warm soapy water.

IMPORTANT NOTES:

- The lamp surround is not recommended for cleaning in dishwashers.
- Do not use cleaning agents or solvents when cleaning this product.

Electrician's wiring instructions

Your new 7500ATP requires a 230-240V, 50Hz electrical supply. All electrical work must be carried out by a qualified electrician and installed in accordance with relevant electrical wiring regulations.

Your new 7500ATP comes with all required wall and architrave mounting, switch plates and switches.

