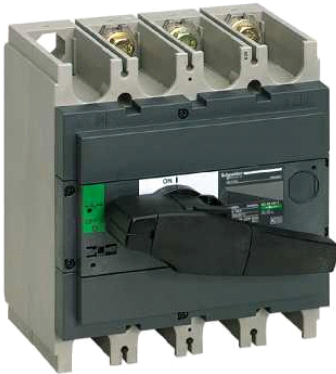


31104

switch-disconnector Compact INS250 - 160 A - 3 poles



Main

Range	Compact
Product or component type	Switch disconnector
Product name	Compact INS
Poles description	3P
Network type	AC DC
Network frequency	50/60 Hz
[Ie] rated operational current	DC-22A : 160 A DC 125 V 2 poles in series AC-22A : 160 A AC 50/60 Hz 440/480 V AC-22A : 160 A AC 50/60 Hz 660/690 V AC-22A : 160 A AC 50/60 Hz 220/240 V AC-22A : 160 A AC 50/60 Hz 380/415 V AC-23A : 160 A AC 50/60 Hz 440/480 V AC-23A : 160 A AC 50/60 Hz 380/415 V AC-22A : 160 A AC 50/60 Hz 500/525 V AC-23A : 160 A AC 50/60 Hz 500/525 V AC-23A : 160 A AC 50/60 Hz 220/240 V AC-23A : 160 A AC 50/60 Hz 480 V NEMA AC-23A : 160 A AC 50/60 Hz 660/690 V AC-22A : 160 A AC 50/60 Hz 480 V NEMA DC-23A : 160 A DC 125 V 2 poles in series
[Ui] rated insulation voltage	750 V AC 50/60 Hz
[Ith] conventional free air thermal current	160 A (60 °C)
[Icm] rated short-circuit making capacity	30 kA 690 V AC 50/60 Hz switch-disconnector alone 330 kA 690 V AC 50/60 Hz with upstream protection circuit breaker
[Ue] rated operational voltage	125 V DC 690 V AC 50/60 Hz
Suitability for isolation	Yes
Contact position indicator	Yes
Visible break	No
Pollution degree	3

Complementary

Control type	Direct front rotary handle
Handle colour	Black
Mounting mode	Fixed
Mounting support	Plate Rail
Upside connection	Front
Downside connection	Front
Maximum power	AC-23 : 45 kW 220/240 V AC 50/60 Hz AC-23 : 90 kW 660/690 V AC 50/60 Hz AC-23 : 90 kW 440 V AC 50/60 Hz AC-23 : 110 kW 500/525 V AC 50/60 Hz AC-23 : 45 kW 230 V NEMA AC 50/60 Hz AC-23 : 75 kW 380/415 V AC 50/60 Hz AC-23 : 90 kW 480 V NEMA AC 50/60 Hz
Rated duty	Uninterrupted
[Icw] rated short-time withstand current	1.8 kA (30 s) conforming to IEC 60947-3 2.2 kA (20 s) conforming to IEC 60947-3 4.9 kA (3 s) conforming to IEC 60947-3 8.5 kA (1 s) conforming to IEC 60947-3
Mechanical durability	15000 cycles

The information provided in this documentation contains general descriptions and/or technical characteristics of the performance of the products contained herein. This documentation is not intended as a substitute for and is not to be used for determining suitability or reliability of these products for specific user applications. It is the duty of any such user or integrator to perform the appropriate and complete risk analysis, evaluation and testing of the products with respect to the relevant specific application or use thereof. Neither Schneider Electric Industries SAS nor any of its affiliates or subsidiaries shall be responsible or liable for misuse of the information contained herein.

Electrical durability	AC-22A : 1500 cycles 440 V AC 50/60 Hz
	AC-22A : 1500 cycles 500 V AC 50/60 Hz
	AC-22A : 1500 cycles 690 V AC 50/60 Hz
	AC-23A : 1500 cycles 440 V AC 50/60 Hz
	AC-23A : 1500 cycles 500 V AC 50/60 Hz
	AC-23A : 1500 cycles 690 V AC 50/60 Hz
	DC-22A : 1500 cycles 125 V DC 2 poles in series
	DC-23A : 1500 cycles 125 V DC 2 poles in series

Connection pitch	35 mm
Height	136 mm
Width	140 mm
Depth	96 mm
Product weight	2 kg

Environment

standards	IEC 60947-1 IEC 60947-3
product certifications	CCC KEMA-KEUR
IP degree of protection	IP40 conforming to IEC 60529
IK degree of protection	IK07 conforming to EN 50102
ambient air temperature for operation	-25...70 °C
ambient air temperature for storage	-50...85 °C