

**THREADED ROD**

■ Ask us about  
Red Cutters



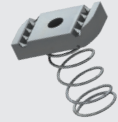
Supplied in 3m lengths

Threaded Size	Zinc Plated	Hot Dip Galvanised	Stainless Steel
M6	TR6Z <span style="color: green;">A</span>	-	-
M8	TR8Z <span style="color: green;">A</span>	TR8H <span style="color: green;">A</span>	TR8S <span style="color: orange;">C</span>
M10	TR10Z <span style="color: green;">A</span>	TR10H <span style="color: green;">A</span>	TR10S <span style="color: green;">A</span>
M12	TR12Z <span style="color: green;">A</span>	TR12H <span style="color: green;">A</span>	TR12S <span style="color: green;">A</span>
M16	TR16Z <span style="color: orange;">C</span>	TR16H <span style="color: orange;">C</span>	TR16S <span style="color: orange;">C</span>

**CHANNEL NUT, LONG SPRING**

Box Qty: **100**

Suits 41mm high channel.  
Suits all 41mm wide channel.



Threaded Size	Zinc Plated	Hot Dip Galvanised	Stainless Steel
M6	E1006Z <span style="color: green;">A</span>	E1006H <span style="color: green;">A</span>	E1006S <span style="color: green;">A</span>
M8	E1007Z <span style="color: green;">A</span>	E1007H <span style="color: green;">A</span>	E1007S <span style="color: green;">A</span>
M10	E1008Z <span style="color: green;">A</span>	E1008H <span style="color: green;">A</span>	E1008S <span style="color: green;">A</span>
M12	E1010Z <span style="color: green;">A</span>	E1010H <span style="color: green;">A</span>	E1010S <span style="color: green;">A</span>

**MUD GUARD WASHERS**



Box Qty:  
**100-200** varies depending on thread size.

Outside diameter 31mm

Threaded Size	Zinc Plated	Hot Dip Galvanised	Stainless Steel
M6	MW6Z <span style="color: green;">A</span>	MW6H <span style="color: green;">A</span>	MW6S <span style="color: orange;">C</span>
M8	MW8Z <span style="color: green;">A</span>	MW8H <span style="color: green;">A</span>	MW8S <span style="color: orange;">C</span>
M10	MW10Z <span style="color: green;">A</span>	MW10H <span style="color: green;">A</span>	MW10S <span style="color: orange;">C</span>
M12	MW12Z <span style="color: green;">A</span>	MW12H <span style="color: green;">A</span>	MW12S <span style="color: orange;">C</span>

**CHANNEL NUT, SHORT SPRING**

Box Qty: **100**

Suits 21mm high channel.  
Suits all 41mm wide channel.



Thread Size	Zinc Plated	Hot Dip Galvanised
M6	E4006Z <span style="color: green;">A</span>	E4006H <span style="color: green;">A</span>
M8	E4007Z <span style="color: green;">A</span>	E4007H <span style="color: green;">A</span>
M10	E4008Z <span style="color: green;">A</span>	E4008H <span style="color: green;">A</span>
M12	E4010Z <span style="color: green;">A</span>	E4010H <span style="color: green;">A</span>

**PAN HEAD SCREWS**



Box Qty:  
**100-200** varies depending on screw size.

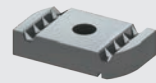
Size = thread size x length (mm)

Size	Zinc Plated	Stainless Steel
M6x16	PS616Z <span style="color: green;">A</span>	PS616S <span style="color: orange;">C</span>
M6x20	PS620Z <span style="color: green;">A</span>	PS620S <span style="color: orange;">C</span>
M6x25	PS625Z <span style="color: green;">A</span>	PS625S <span style="color: green;">A</span>
M8x25	PS825Z <span style="color: green;">A</span>	-

**CHANNEL NUT, NO SPRING**

Box Qty: **100**

Suits all 41mm wide channel



Thread Size	Zinc Plated	Hot Dip Galvanised
M6	E3006Z <span style="color: green;">A</span>	E3006H <span style="color: green;">A</span>
M8	E3007Z <span style="color: green;">A</span>	E3007H <span style="color: green;">A</span>
M10	E3008Z <span style="color: green;">A</span>	E3008H <span style="color: green;">A</span>
M12	E3010Z <span style="color: green;">A</span>	E3010H <span style="color: green;">A</span>

**COUNTERSUNK PHILLIPS SCREW**



Box Qty:  
**100-200** varies depending on screw size.

Size = thread size x length (mm)

Size	Zinc Plated	Stainless Steel
M6x16	CS616Z <span style="color: green;">A</span>	CS616S <span style="color: orange;">C</span>
M6x20	CS620Z <span style="color: green;">A</span>	CS620S <span style="color: orange;">C</span>
M6x25	CS625Z <span style="color: green;">A</span>	CS625S <span style="color: orange;">C</span>
M8x20	CS820Z <span style="color: orange;">C</span>	CS820S <span style="color: orange;">C</span>
M8x25	CS825Z <span style="color: orange;">C</span>	CS825S <span style="color: orange;">C</span>

**E3016 CHANNEL NUT, NO SPRING**

Box Qty: **100**

Suits all channel



Thread Size	Zinc Plated	Hot Dip Galvanised	Stainless Steel
M6	E3016Z <span style="color: green;">A</span>	E3016H <span style="color: green;">A</span>	E3016S <span style="color: green;">A</span>

FASTENERS

STRUT SYSTEMS

CABLE SUPPORTS

FIRERATED

PIPE SUPPORTS