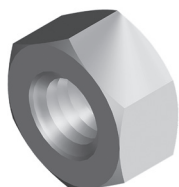


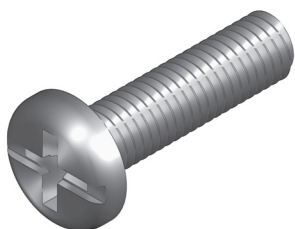
Thread Diameter	Thread Length mm	Zinc Plated	Hot Dip Galvanised	Stainless Steel
M6	20	HS620Z	HS620H	HS620S
	25	HS625Z	HS625H	HS625S
	30	HS630Z	HS630H	HS630S
	40	HS640Z	HS640H	HS640S
M8	20	HS820Z	HS820H	HS820S
	25	HS825Z	HS825H	HS825S
	30	HS830Z	HS830H	HS830S
	40	HS840Z	HS840H	HS840S
M10	20	HS1020Z	HS1020H	HS1020S
	25	HS1025Z	HS1025H	HS1025S
	30	HS1030Z	HS1030H	HS1030S
	40	HS1040Z	HS1040H	HS1040S
M12	25	HS1225Z	HS1225H	HS1225S
	30	HS1230Z	HS1230H	HS1230S
	40	HS1240Z	HS1240H	HS1240S
	50	HS1250Z	HS1250H	HS1250S

Hex Screw



Thread Diameter	Zinc Plated	Hot Dip Galvanised	Stainless Steel
M6	HN6Z	HN6H	HN6S
M8	HN8Z	HN8H	HN8S
M10	HN10Z	HN10H	HN10S
M12	HN12Z	HN12H	HN12S
M16	HN16Z	HN16H	HN16S

Hex Nut



Thread Diameter	Thread Length mm	Zinc Plated	Hot Dip Galvanised	Stainless Steel
M6	16	PS616Z	-	-
	20	PS620Z	PS620H	PS620S
	25	PS625Z	PS625H	PS625S

Pan Screw

channel

nuts and bolts

cantilever brackets

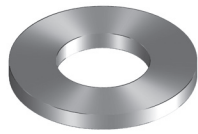
channel accessories

tray systems

steel cable ladders

aluminium cable ladders

covers



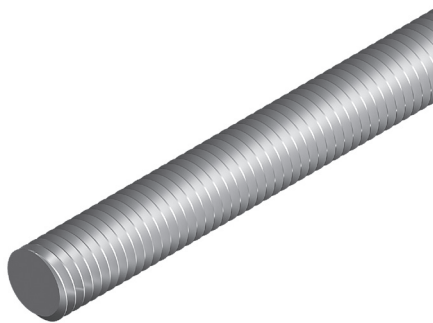
Thread Diameter	Zinc Plated	Hot Dip Galvanised	Stainless Steel
M6	FW6Z	FW6H	FW6S
M8	FW8Z	FW8H	FW8S
M10	FW10Z	FW10H	FW10S
M12	FW12Z	FW12H	FW12S
M16	FW16Z	FW16H	FW16S

Flat Washer



Thread Diameter	Zinc Plated	Hot Dip Galvanised	Stainless Steel
M6	SW6Z	SW6H	SW6S
M8	SW8Z	SW8H	SW8S
M10	SW10Z	SW10H	SW10S
M12	SW12Z	SW12H	SW12S
M16	SW16Z	SW16H	SW16S

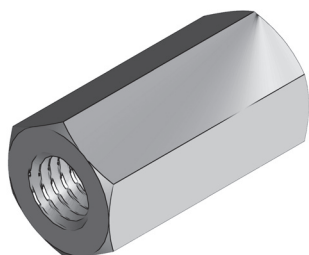
Spring Washer



Thread Diameter	Zinc Plated	Hot Dip Galvanised	Stainless Steel
M6	TR6Z	-	-
M8	TR8Z	-	-
M10	TR10Z	TR10H	TR10S
M12	TR12Z	TR12H	TR12S
M16	TR16Z	TR16H	TR16S

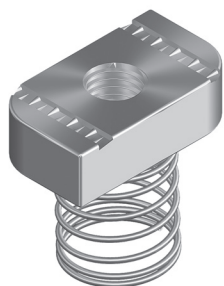
Standard length: 3.0 metres.

Threaded Rod



Thread Diameter	Zinc Plated	Hot Dip Galvanised	Stainless Steel
M6	RC6Z	-	-
M8	RC8Z	-	-
M10	RC10Z	RC10H	RC10S
M12	RC12Z	RC12H	RC12S
M16	RC16Z	RC16H	RC16S

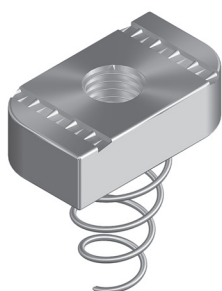
Rod Coupler



To fit all 41 mm high channels.

Channel Nut with Long Spring

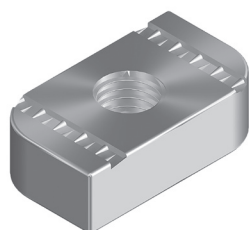
Thread Diameter	Zinc Plated	Hot Dip Galvanised	Stainless Steel
M6	B1006Z	B1006H	B1006S
M8	B1007Z	B1007H	B1007S
M10	B1008Z	B1008H	B1008S
M12	B1010Z	B1010H	B1010S



To fit all 21 mm high channels.

Channel Nut with Short Spring

Thread Diameter	Zinc Plated	Hot Dip Galvanised	Stainless Steel
M6	B4006Z	B4006H	B4006S
M8	B4007Z	B4007H	B4007S
M10	B4008Z	B4008H	B4008S
M12	B4010Z	B4010H	B4010S



Fits all channel sections.

Channel Nut without Spring

Thread Diameter	Zinc Plated	Hot Dip Galvanised	Stainless Steel
M6	B3006Z	B3006H	B3006S
M8	B3007Z	B3007H	B3007S
M10	B3008Z	B3008H	B3008S
M12	B3010Z	B3010H	B3010S



Fits all channel sections.

Channel Nut without Spring

Thread Diameter	Zinc Plated	Hot Dip Galvanised	Stainless Steel
M6	B3016Z	B3016H	B3016S

channel

nuts and bolts

cantilever brackets

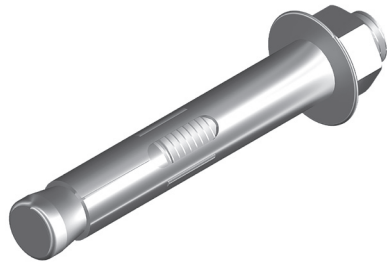
channel accessories

tray systems

steel cable ladders

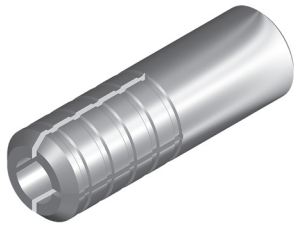
aluminium cable ladders

covers



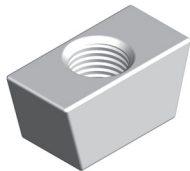
Thread Diameter	Thread Length mm	Zinc Plated
M6	35	DB635Z
M8	40	DB840Z
M10	40	DB1040Z
M10	60	DB1060Z
M12	60	DB1260Z
M12	75	DB1275Z

Dynabolt

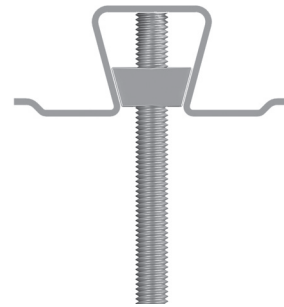


Thread Diameter	Anchor	Set In Tool
M6	DI6Z	ST6Z
M8	DI8Z	ST8Z
M10	DI10Z	ST10Z
M12	DI12Z	ST12Z

Drop In Anchor

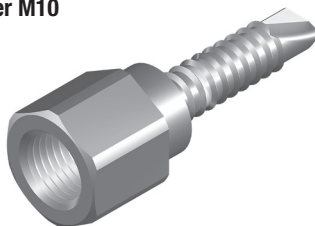


Ordering Code: WN10Z
 Note: Suits M10 Allthread.



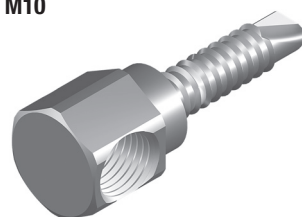
Wedge Nut

Vertical Hanger M10



Ordering Code: VH10Z

Side Hanger M10



Ordering Code: SH10Z

Rod Hanger