

PRODUCT DATASHEET

HQI-T 2000 W/N/E SUPER

POWERSTAR HQI-T 1000...2000 W | Metal halide lamps for enclosed luminaires



AREAS OF APPLICATION

- Factories and workshops
- Sports halls and multi-purpose halls
- Industrial installations
- Airports
- Docks and port facilities
- Marshaling yards, container transshipment facilities
- Approved only for use in enclosed luminaires
- Outdoor applications only in suitable luminaires

PRODUCT BENEFITS

- Output of up to 2,000 W
- High efficiency
- E40 screw base for simple lamp handling
- Long lifetime
- UV values significantly below the maximum permitted thresholds to IEC 61167 thanks to UV filter

PRODUCT FEATURES

- POWERSTAR quartz technology
- Light colors: neutral white (N), daylight (D)



TECHNICAL DATA

Electrical data

Nominal wattage	2000.00 W
Rated wattage	1980.00 W
Lamp current	9.6 A
PFC capacitor at 50 Hz	37 µF ¹⁾
Nominal voltage	220 V
Ignition voltage	4.0 / 5.0 kVp ²⁾

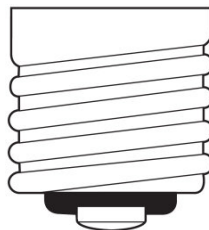
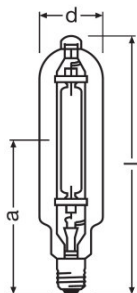
¹⁾ At rated voltage and $\cos \varphi \geq 0.9$

²⁾ Minimum / Maximum

Photometrical data

Rated luminous flux	245000 lm
Color rendering index Ra	63
Color temperature	4550 K
Light color	646
UV protection	Yes
Luminous flux	245000 lm

Dimensions & weight



E40
IEC 7004-24
DIN 49625

Diameter	106.0 mm
Length	430.0 mm
Light center length (LCL)	265.0 mm
Product weight	580.00 g

Temperatures & operating conditions

Maximum permitted outer bulb temperature	500 °C
Maximum permitted base edge temperature	250 °C

Lifespan

Lifespan B50	5500 h
---------------------	--------

Additional product data

Base (standard designation)	E40
Design / version	Clear
Mercury content	175.0 mg

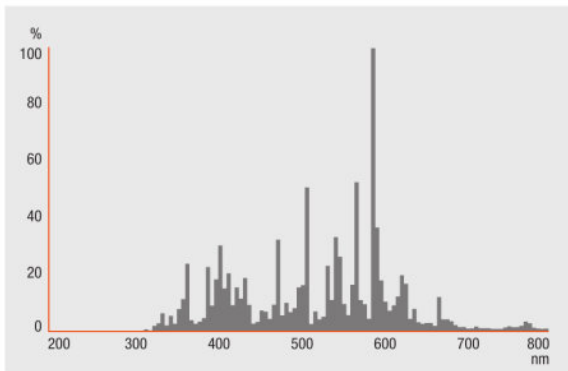
Capabilities

Dimmable	No
Burning position	p60
Enclosed luminaire required	Yes

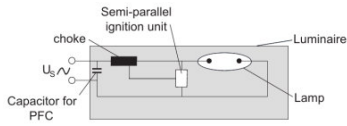
Country-specific categorizations

ILCOS	MT/UB-2000/642-E/E/SL-E40-106/430/H
--------------	-------------------------------------

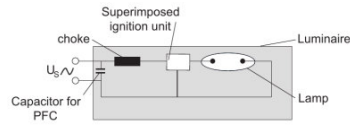
Light Distribution



Spectral power distribution



Circuit diagram



Circuit diagram

LOGISTICAL DATA

Product code	Product description	Packaging unit (Pieces/Unit)	Dimensions (length x width x height)	Volume	Gross weight
4008321979063	HQI-T 2000 W/N/E SUPER	Shipping carton box 4	525 mm x 270 mm x 275 mm	38.98 dm ³	3724.00 g

The mentioned product code describes the smallest quantity unit which can be ordered. One shipping unit can contain one or more single products. When placing an order, for the quantity please enter single or multiples of a shipping unit.

DISCLAIMER

Subject to change without notice. Errors and omission excepted. Always make sure to use the most recent release.