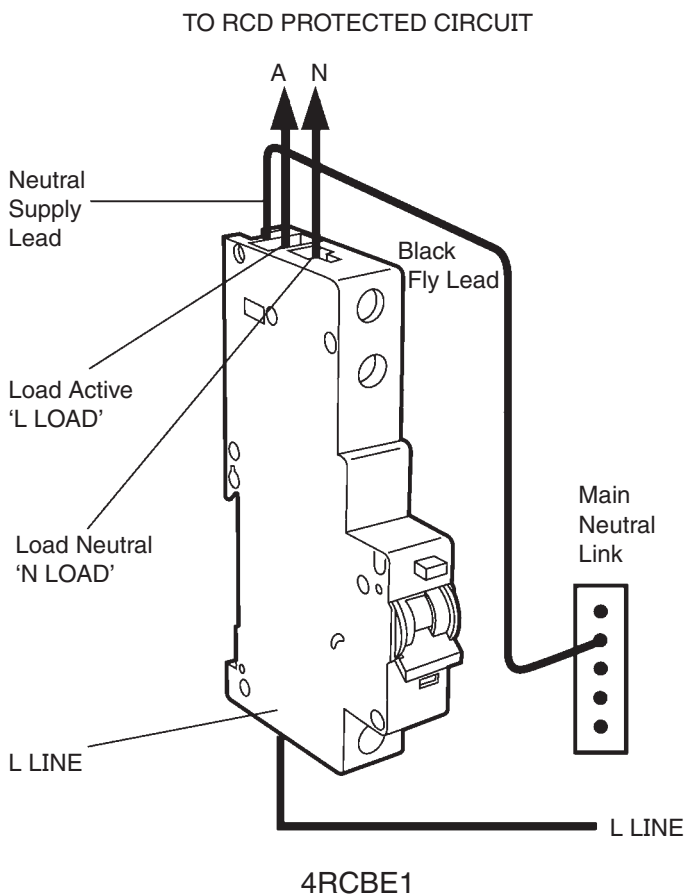


# Module (18mm) 1 Pole Combination Residual Current Device and Miniature Circuit Breaker

## 4RCBE Series

## Installation Instructions

1. Fit the RCD/MCB as required into the consumer switchboard.
2. Black Neutral fly lead must be connected to the main Neutral link.
3. Load connections are made to the outgoing terminals marked 'L LOAD' and 'N LOAD'.
4. Correctly connect line and load as marked to prevent damage to the unit.
5. High voltage insulation testers (meggers) must not be used with the unit in circuit. Disconnect the RCD/MCB prior to this testing.

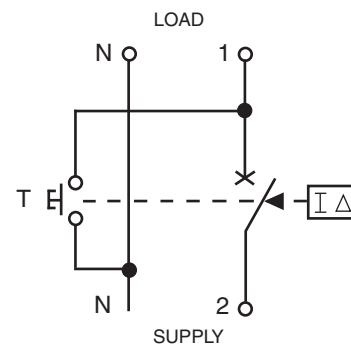


### Applications

4RCBE Series suitable for installation into:

4C--M SERIES	4CS12FD
4CW--M SERIES	4CS18FD
4CC6	4FCS12FD
4CC9	4FCS18FD
4C6FD*	
4C11FD*	
4C17FD*	
4C24FD*	
4CW24*	
4CW36*	
4FC11FD*	
4FC17FD*	

\*WARNING: Suitable wiring space limited on top side of 4RCBE.



## Electricians' on site fault finding guide

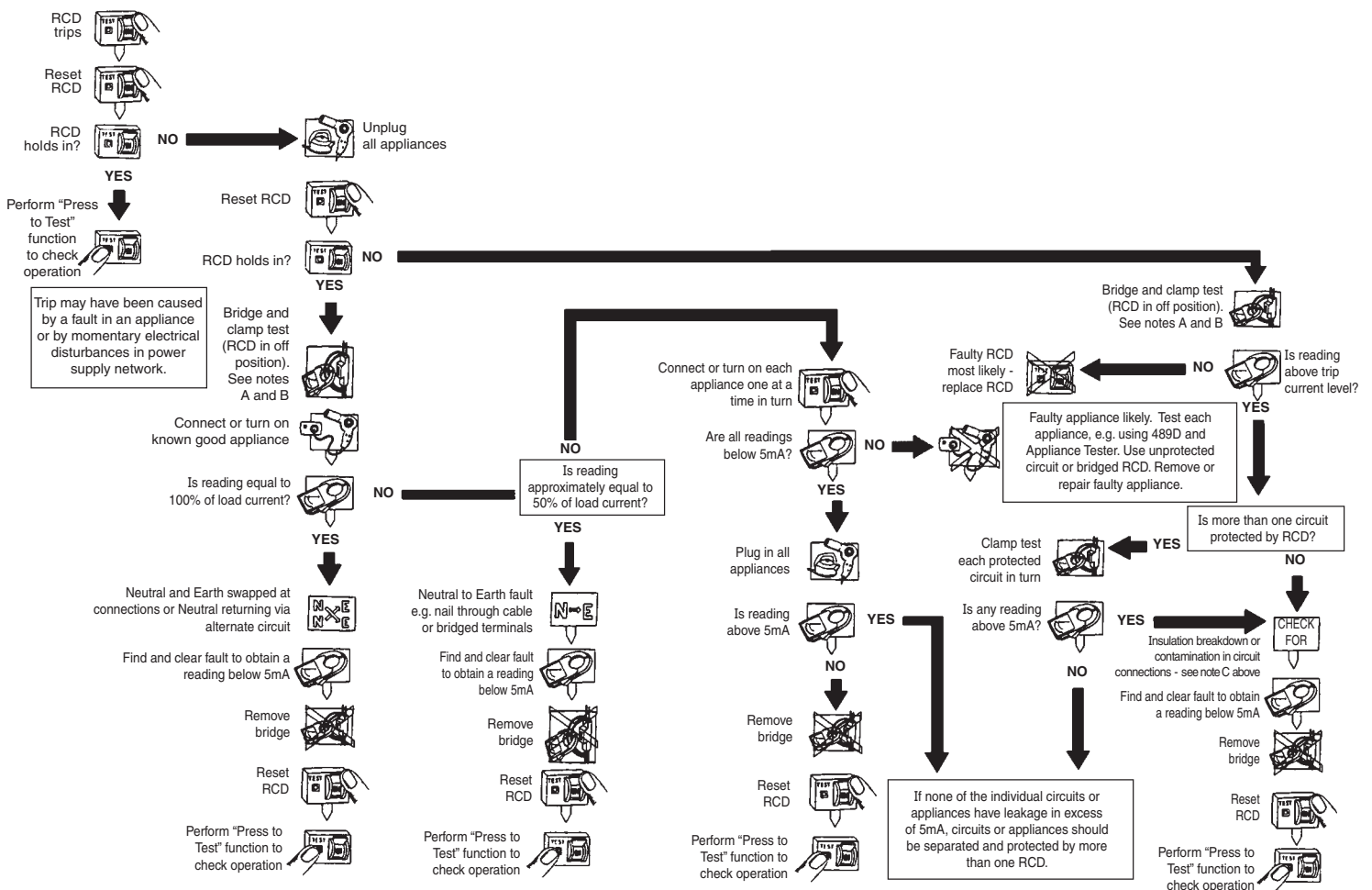
Remember to test regularly. RCDs should be tested monthly by operating their in-built "test" button. You should remind the customer of this.

When you talk to the customer, find out what appliances were in use when the RCD tripped.

**NOTE A:** Bridging of combination RCDs with overcurrent protection negates that function and may result in fusing the main fuse with faulty wiring. Note that in these instances, fault currents could be significantly higher and therefore suitable precautions should be taken.

**NOTE B:** Under no circumstances should the "Press to Test" function be utilised while an RCD is bridged.

**NOTE C:** Insulation breakdown could be alternatively identified by using the Clipsal 491 Insulation Tester.



## Warranty

- The benefits conferred herein are in addition to and in no way shall this warranty be deemed to derogate, either expressly or by implication, from all other rights and remedies in respect of the 4RCBE Series, which the consumer has under the Trade Practices Act (Commonwealth) or any other similar State or Territory Laws.
- The Warrantor is Clipsal Australia Pty Ltd of 33 - 37 Port Wakefield Road, Gepps Cross, South Australia 5094. With registered offices in all Australian States.  
**Contact your state branch on 1300 2025 25.**
- The 4RCBE Series products are guaranteed against faulty workmanship and materials for a period of one (1) year from the date of installation.
- Clipsal Australia Pty Ltd reserves the right to determine whether to repair or replace any faulty product free of charge for parts and labour or to give a refund in respect of the faulty product.
- This warranty is expressly subject to the 4RCBE being installed, wired, tested, operated and used in accordance with the manufacturer's instructions.
- Should the product (the subject of the claim) be found to be in good working order all costs of the claim shall be met by the consumer.
- When making a claim the consumer shall forward the 4RCBE to the nearest office of Clipsal Australia Pty Ltd together with adequate particulars of the defect within 28 days after the appearance of the defect.

**Clipsal Australia Pty Ltd**

A member of Schneider Electric

Contact us: [clipsal.com/feedback](http://clipsal.com/feedback)

National Customer Care Enquiries:

**Tel 1300 2025 25 Fax 1300 2025 56**

**clipsal.com**

Clipsal Australia Pty Ltd reserves the right to change specifications, modify designs and discontinue items without incurring obligation and whilst every effort is made to ensure that descriptions, specifications and other information in this catalogue are correct, no warranty is given in respect thereof and the company shall not be liable for any error therein.

© Clipsal Australia Pty Ltd. The identified trademarks and copyrights are the property of Clipsal Australia Pty Ltd unless otherwise noted.