



Fire Rated Wall Boxes

Installation Instructions



157MDF

157/1F

157/2F

2157/2F

2157/3F

Disclaimer

Schneider Electric reserves the right to change specifications, modify designs and discontinue items without incurring obligation and whilst every effort is made to ensure that descriptions, specifications and other information in this catalogue are correct, no warranty is given in respect thereof and the company shall not be liable for any error therein.

© Schneider Electric 2022

This material is copyright under Australian, New Zealand and international laws. Except as permitted under the relevant law, no part of this work may be reproduced by any process without prior written permission of and acknowledgement to Schneider Electric.



887846

For your safety

⚠ ⚠ DANGER

HAZARD OF ELECTRIC SHOCK, EXPLOSION, OR ARC FLASH

- It is illegal for persons other than an appropriately licensed electrical contractors or other persons authorized by legislation to work on the fixed wiring of any electrical installation.
- To comply with all safety standards, the device must be used only for the purpose described in this instruction and must be installed in accordance with the wiring rules and regulation in the location where it is installed.
- Isolate the electrical supply before doing any work on the product.
- Do not remove or displace intumescent material.
- Use appropriate Fire-Resistant Sealant to seal any gaps around box or to replace any intumescent material inadvertently removed.

Failure to follow these instructions will result in death or serious injury.

⚠ CAUTION

HAZARD OF EQUIPMENT DAMAGE

- Install the device according to instructions in this document.
- Fitting the gasket provided helps to ensure acoustic rating.
- Do not use this product for any other purpose than specified in this instruction.

Failure to follow these instructions can result in injury or equipment damage.

NOTICE

RISK OF EQUIPMENT DAMAGE OR MALFUNCTION

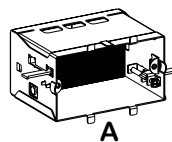
To avoid damaging the equipment and possibly voiding the warranty:

- Rating is dependent on strict adhesion to installation instructions.
- Do not overtighten clamping screws.

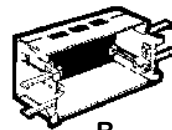
Failure to follow these instructions can result in equipment damage.

Technical data

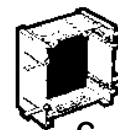
	Cat. No.	Width	Height (mm)	Depth	Mounting Centres
A	157MDF	96mm	52mm	70mm	84mm
B	157/1F	96mm	52mm	50mm	84mm
C	157/2F	96mm	96mm	47mm	84mm x 46mm
D	2157/2F	135mm	96mm	58mm	84mm x 72mm
E	2157/3F	205mm	96mm	58mm	84mm x 72mm (3 sets)



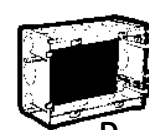
A



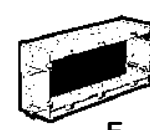
B



C



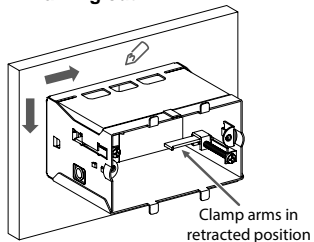
D



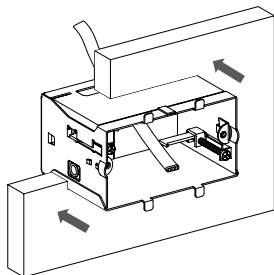
E

Installation

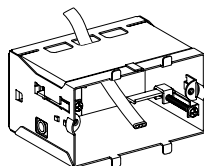
1. Marking out.



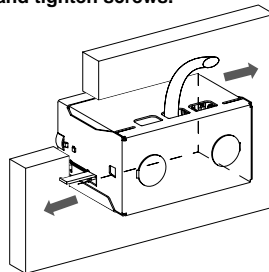
3. Insert box into cut-out.



2. Feed cable into wall box.



4. Extend clamp arms outwards and tighten screws.



Procedure

- (1) Use the box as a template to mark cut-out.
- (2) Cut opening in wall with care to properly fit the appropriate fire rated box.
- (3) Remove knockout for cable entry.
If bringing cables through rear of box, slit intumescent material carefully with a sharp knife without removing any material.
- (4) Feed cables into wallbox.
- (5) Retract clamping arms completely into box.
- (6) Insert box into wall cut-out.
Single gang only: fold down flap, insert box and restore flap after insertion.
- (7) Extend clamps and tighten the clamping screws until box is firmly fixed in position.
- (8) Gently tap retaining lugs until flush with wall face.
- (9) Use appropriate Fire-Resistant Sealant to seal any gaps around box or to replace any intumescent material inadvertently removed.
- (10) Fitting the provided gasket helps to ensure acoustic rating.

Customer care

Warranty information

We warrant this product for 2 years.
See **Warranty** links below.

Schneider Electric (Australia) Pty Ltd

33-37 Port Wakefield Road,
Gepps Cross, SA 5094

Customer Care: 13 73 28

Email: customercare.au@se.com

Warranty:

<https://www.se.com/au/en/about-us/legal/terms-and-conditions.jsp>

www.se.com

Schneider Electric (NZ) Ltd

Building 6, 60 Highbrook Drive
East Tamaki, Auckland 2013

Customer Care: 0800 652 999

Email: sales@nz.schneider-electric.com

Warranty:

<https://www.se.com/nz/en/about-us/legal/terms-and-conditions.jsp>

www.se.com