

# CABAC PATCH LEADS

When choosing your patch lead, whether it be CAT6a, Cat6 or CAT5e, match them to the components of the network they will be used in.

For example if the network is CAT5E, use CAT5e patch leads, if it is CAT6 use CAT6 patch leads and so on.

CAT6A is backwards compatible with the earlier standards, for example CAT6 and CAT5e. This means CAT6a patch leads can be used in a CAT6 and CAT5e network. Similarly CAT6 patch leads can be used in CAT5e networks.

CAT6a is characterised by a bandwidth of 500MHz and maximum transmission rates of 10Gbps.

CAT6 is characterised by a bandwidth of 250MHz and maximum transmission rates of 1Gbps.

CAT5e is characterised by a bandwidth of 100MHz and maximum transmission rates of 1Gbps.

## CAT6a - SHIELDED PATCH LEADS

- ACMA A-Tick Certified N10227
- Wiring Scheme: T568A
- Conductor Material: Bare Copper
- Fully moulded strain relief snagless boot
- LSZH Jacket
- Shielding: Individually shielded pairs S/FTP
- ETL verified to ANSI/TIA-568-C.2 Category 6A performance
- CAT6a is characterised by a bandwidth of 500MHz and maximum transmission rates of 10Gbps



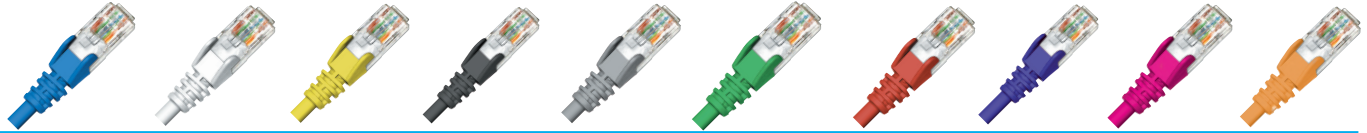
LENGTH (m)	BLUE	WHITE	YELLOW	BLACK	GREY	GREEN	RED	PURPLE
0.5	PLC6ABL0.5	PLC6AWH0.5	PLC6AYL0.5	PLC6ABK0.5	PLC6AGY0.5	PLC6AGN0.5	PLC6ARD0.5	PLC6APU0.5
1	PLC6ABL1	PLC6AWH1	PLC6AYL1	PLC6ABK1	PLC6AGY1	PLC6AGN1	PLC6ARD1	PLC6APU1
1.5	PLC6ABL1.5	PLC6AWH1.5	PLC6AYL1.5	PLC6ABK1.5	PLC6AGY1.5	N/A	N/A	N/A
2	PLC6ABL2	PLC6AWH2	PLC6AYL2	PLC6ABK2	PLC6AGY2	PLC6AGN2	PLC6ARD2	PLC6APU2
3	PLC6ABL3	PLC6AWH3	PLC6AYL3	PLC6ABK3	PLC6AGY3	PLC6AGN3	PLC6ARD3	PLC6APU3
5	PLC6ABL5	PLC6AWH5	PLC6AYL5	PLC6ABK5	PLC6AGY5	PLC6AGN5	PLC6ARD5	PLC6APU5
10	PLC6ABL10	PLC6AWH10	PLC6AYL10	PLC6ABK10	PLC6AGY10	PLC6AGN10	PLC6ARD10	PLC6APU10

In support of our policy of continuous product improvement we reserve the right to change materials and specifications without notice. Drawings, where used, are not to scale. All dimensions are in millimetres and sizes given are approximate. Where possible, technical MSDS data sheets are made available on the website. All products should be installed and used in accordance with manufacturer's instructions provided. Warning: products may be the subject of registered designs and patents. Refer to website for terms and conditions on warranty.



## CAT6 PATCH LEADS

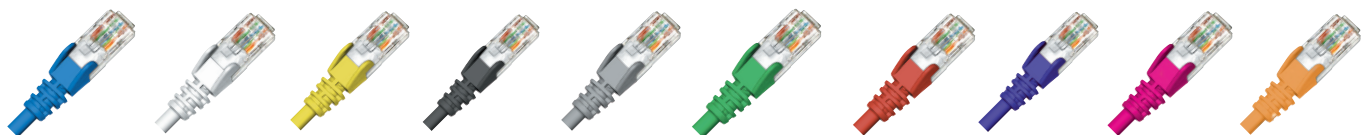
- ACMA A-Tick Certified N10227
- Wiring Scheme: T568A
- Conductor Material: Bare Copper
- Fully moulded strain relief snagless boot
- PVC jacket
- ETL verified to ANSI/TIA-568-C.2 Category 6 performance
- CAT6 is characterised by a bandwidth of 250MHz and maximum transmission rates of 1Gbps



LENGTH (m)	BLUE	WHITE	YELLOW	BLACK	GREY	GREEN	RED	PURPLE	PINK	ORANGE
0.3	PLC6BL0.3	N/A	N/A	N/A	N/A	N/A	N/A	N/A	N/A	N/A
0.5	PLC6BL0.5	PLC6WH0.5	PLC6YL0.5	PLC6BK0.5	PLC6GY0.5	PLC6GN0.5	PLC6RD0.5	PLC6PU0.5	PLC6PK0.5	PLC6OR0.5
1	PLC6BL1	PLC6WH1	PLC6YL1	PLC6BK1	PLC6GY1	PLC6GN1	PLC6RD1	PLC6PU1	PLC6PK1	PLC6OR1
1.5	PLC6BL1.5	PLC6WH1.5	PLC6YL1.5	PLC6BK1.5	PLC6GY1.5	PLC6GN1.5	PLC6RD1.5	PLC6PU1.5	PLC6PK1.5	PLC6OR1.5
2	PLC6BL2	PLC6WH2	PLC6YL2	PLC6BK2	PLC6GY2	PLC6GN2	PLC6RD2	PLC6PU2	PLC6PK2	PLC6OR2
3	PLC6BL3	PLC6WH3	PLC6YL3	PLC6BK3	PLC6GY3	PLC6GN3	PLC6RD3	PLC6PU3	PLC6PK3	PLC6OR3
5	PLC6BL5	PLC6WH5	PLC6YL5	PLC6BK5	PLC6GY5	PLC6GN5	PLC6RD5	PLC6PU5	PLC6PK5	PLC6OR5
10	PLC6BL10	PLC6WH10	PLC6YL10	PLC6BK10	PLC6GY10	PLC6GN10	PLC6RD10	PLC6PU10	PLC6PK10	PLC6OR10
20	PLC6BL20	PLC6WH20	PLC6YL20	PLC6BK20	PLC6GY20	PLC6GN20	PLC6RD20	N/A	N/A	N/A

## CAT5e PATCH LEADS

- ACMA A-Tick Certified N10227
- Wiring Scheme: T568A
- Conductor Material: Bare Copper
- Fully moulded strain relief snagless boot
- PVC jacket
- ETL verified to ANSI/TIA-568-B.2 Category 5e performance
- CAT5e is characterised by a bandwidth of 100MHz and maximum transmission rates of 1Gbps



LENGTH (m)	BLUE	WHITE	YELLOW	BLACK	GREY	GREEN	RED	PURPLE	PINK	ORANGE
0.3	PL5EBL0.3	N/A	N/A	N/A	N/A	N/A	N/A	N/A	N/A	N/A
0.5	PL5EBL0.5	PL5EWH0.5	PL5EYL0.5	PL5EBK0.5	PL5EGY0.5	PL5EGN0.5	PL5ERD0.5	PL5EPU0.5	PL5EPK0.5	PL5EOR0.5
0.75	N/A	N/A	N/A	PL5EBK0.75	N/A	N/A	N/A	N/A	N/A	N/A
1	PL5EBL1	PL5EWH1	PL5EYL1	PL5EBK1	PL5EGY1	PL5EGN1	PL5ERD1	PL5EPU1	PL5EPK1	PL5EOR1
1.5	PL5EBL1.5	PL5EWH1.5	PL5EYL1.5	PL5EBK1.5	PL5EGY1.5	PL5EGN1.5	PL5ERD1.5	PL5EPU1.5	PL5EPK1.5	PL5EOR1.5
2	PL5EBL2	PL5EWH2	PL5EYL2	PL5EBK2	PL5EGY2	PL5EGN2	PL5ERD2	PL5EPU2	PL5EPK2	PL5EOR2
3	PL5EBL3	PL5EWH3	PL5EYL3	PL5EBK3	PL5EGY3	PL5EGN3	PL5ERD3	PL5EPU3	PL5EPK3	PL5EOR3
5	PL5EBL5	PL5EWH5	PL5EYL5	PL5EBK5	PL5EGY5	PL5EGN5	PL5ERD5	PL5EPU5	PL5EPK5	PL5EOR5
10	PL5EBL10	PL5EWH10	PL5EYL10	PL5EBK10	PL5EGY10	PL5EGN10	PL5ERD10	PL5EPU10	PL5EPK10	PL5EOR10
15	PL5EBL15	N/A	N/A	N/A	N/A	N/A	N/A	N/A	N/A	N/A
20	PL5EBL20	PL5EWH20	N/A	PL5EBK20	PL5EGY20	PL5EGN20	N/A	N/A	N/A	N/A
30	PL5EBL30	PL5EWH30	N/A	PL5EBK30	PL5EGY30	PL5EGN30	N/A	N/A	N/A	N/A
40	PL5EBL40	PL5EWH40	N/A	PL5EBK40	PL5EGY40	PL5EGN40	N/A	N/A	N/A	N/A
50	PL5EBL50	PL5EWH50	N/A	PL5EBK50	PL5EGY50	PL5EGN50	N/A	N/A	N/A	N/A