

TERMINALS

END CONNECTORS 0.5-6.6MM



- High quality product - meets international standards
- Conforms to AS 3169 and AS 4437
- PVC insulated

Part No.	Description	Unit	Qty
EC1.25	WIRE SPL.COMB.X SECT.1-2.3MM2	PAK	50
EC2	WIRE SPL.COMB.X SECT.1-3MM2	PAK	50
EC5.5	WIRE SPL.COMB.X SECT 2.6-6.6MM2	PAK	25

WATERPROOF SPLICES



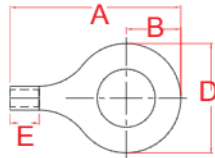
- Featuring a glue lined heat shrink insulation, shrunk onto the wire after crimping
- Completely waterproof connection
- Crimped using standard CABAC or MSSP tooling

Part No.	Nominal Conductor (mm ²)	Colour	Unit	Qty
WPS1.25	0.5 to 1.6	Red	PAK	25
WPS1.25/K	0.5 to 1.6	Red	KIT	1
WPS2	1.0 to 2.6	Blue	PAK	25
WPS2/K	1.0 to 2.6	Blue	KIT	1
WPS5.5	2.5 to 6.0	Yellow	PAK	25
WPS5.5/K	2.5 to 6.0	Yellow	KIT	1

RING TONGUE 10-20MM



- Soldered seam for added strength
- Large diameter rings on a small conductor
- Large ring for large diameter bolt e.g. earth connection
- 100Pk and 50Pk available depending on conductor size



Part No.	Nominal Conductor (mm ²)	Stud Size (mm)	A (mm)	B (mm)	D (mm)	E (mm)	Crimp Tool	Unit	Qty
RTU10-12	10	12	34	11	6.5	8.5	K26 / K27 / K28	PAK	100
RTU10-16	10	16	50	16	8.5	8.5	K26 / K27 / K28	PAK	100
RTU16-16	16	16	54	16	8.5	16.5	K26 / K27 / K28	PAK	50
RTU20-12	20	12	54	16	13	16.5	K28 / K9	PAK	50