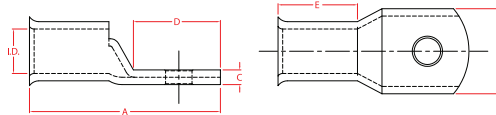


Copper Bell Mouth Lugs

Stranded Cables

CABAC's Bell Mouth Lug range is specifically designed to accommodate fine stranded flexible conductors. Because fine stranded cables have a larger diameter than normal cables, and they tend to splay out after stripping, CABAC has developed this range of lugs, which funnel the strands into the lug and make conductor insertion easy. At the top end of the range, around 150 to 240mm² some manufacturers cables will not fit into the nominal lug. In this case CABAC recommends using one lug size up, and using a special crimping method, described on the next page. CABAC has done tests on various manufacturers cables, and tables defining fitment of cables are available from our sales desk. Please contact CABAC for assistance.

Technical Data - Bell Mouth Lugs are identical to our normal Copper Lugs. Please see page B2 & B3.



Catalogue No.	Nominal Conductor (mm ²)	ID Size	Stud	Dimensions (mm)					Qty Per Box	Tooling			A/F Hex Die (mm)	No. of Crimps				
				A	B	C	D	E		Indent	Hex							
CAL6-6BM	6	3.8	6	27	12	1.0	15	9	100	HN1 HN2	K10/3	K25, K26, K27	K28	K06, K06C, B035	HT131LN-C, HT131-C, HT131-JC, RHU31, RHU31-C, B131-C, B131LN-C, B135-C, CW0-5108	ECW-H3D (to 630mm ²), RHU520	4.4	1
CAL6-8BM			8	27	12	1.0	15											
CAL6-10BM			10	32	16	1.0	20											
CAL10-6BM	10	4.7	6	27	12	1.8	14	10	100	HN1 HN2	K10/3	K25, K26, K27	K28	K06, K06C, B035	HT131LN-C, HT131-C, HT131-JC, RHU31, RHU31-C, B131-C, B131LN-C, B135-C, CW0-5108	ECW-H3D (to 630mm ²), RHU520	5.7	1
CAL10-8BM			8	29	14	1.5	16											
CAL10-10BM			10	32	16	1.3	19											
CAL16-6BM	16	5.5	6	37	11	2.3	14	19	50	HN1 HN2	K10/3	K25, K26, K27	K28	K06, K06C, B035	HT131LN-C, HT131-C, HT131-JC, RHU31, RHU31-C, B131-C, B131LN-C, B135-C, CW0-5108	ECW-H3D (to 630mm ²), RHU520	6.3	1
CAL16-8BM			8	39	14	1.7	16											
CAL16-10BM			10	41	16	1.5	18											
CAL16-12BM	16	5.5	12	49	18	1.4	23	21	50	HN1 HN2	K10/3	K25, K26, K27	K28	K06, K06C, B035	HT131LN-C, HT131-C, HT131-JC, RHU31, RHU31-C, B131-C, B131LN-C, B135-C, CW0-5108	ECW-H3D (to 630mm ²), RHU520	7.7	1
CAL25-6BM			6	41	14	2.4	16											
CAL25-8BM			8	41	14	2.4	16											
CAL25-10BM	25	7.1	10	44	16	2.0	19	21	50	HN1 HN2	K10/3	K25, K26, K27	K28	K06, K06C, B035	HT131LN-C, HT131-C, HT131-JC, RHU31, RHU31-C, B131-C, B131LN-C, B135-C, CW0-5108	ECW-H3D (to 630mm ²), RHU520	9.2	1
CAL25-12BM			12	46	18	1.6	23											
CAL35-6BM	35	8.2	6	44	16	3.0	18	21	50	HN1 HN2	K10/3	K25, K26, K27	K28	K06, K06C, B035	HT131LN-C, HT131-C, HT131-JC, RHU31, RHU31-C, B131-C, B131LN-C, B135-C, CW0-5108	ECW-H3D (to 630mm ²), RHU520	9.2	1
CAL35-8BM			8	44	16	3.0	18											
CAL35-10BM			10	46	18	2.6	20											
CAL35-12BM	35	8.2	12	50	20	2.3	24	21	50	HN1 HN2	K10/3	K25, K26, K27	K28	K06, K06C, B035	HT131LN-C, HT131-C, HT131-JC, RHU31, RHU31-C, B131-C, B131LN-C, B135-C, CW0-5108	ECW-H3D (to 630mm ²), RHU520	9.2	1
CAL50-6BM			6	48	18	3.2	20											
CAL50-8BM			8	48	18	3.2	20											
CAL50-10BM	50	9.5	10	48	18	3.2	20	22	50	HN1 HN2	K10/3	K25, K26, K27	K28	K06, K06C, B035	HT131LN-C, HT131-C, HT131-JC, RHU31, RHU31-C, B131-C, B131LN-C, B135-C, CW0-5108	ECW-H3D (to 630mm ²), RHU520	10.4	1
CAL50-12BM			12	52	21	2.7	24											
CAL70-6BM	70	11.2	6	54	21	3.3	24	24	25	HN1 HN2	K10/3	K25, K26, K27	K28	K06, K06C, B035	HT131LN-C, HT131-C, HT131-JC, RHU31, RHU31-C, B131-C, B131LN-C, B135-C, CW0-5108	ECW-H3D (to 630mm ²), RHU520	11.5	1
CAL70-8BM			8	54	21	3.3	24											
CAL70-10BM			10	54	21	3.3	24											
CAL70-12BM	70	11.2	12	54	21	3.3	24	24	25	HN1 HN2	K10/3	K25, K26, K27	K28	K06, K06C, B035	HT131LN-C, HT131-C, HT131-JC, RHU31, RHU31-C, B131-C, B131LN-C, B135-C, CW0-5108	ECW-H3D (to 630mm ²), RHU520	11.5	1
CAL95-8BM			8	60	25	3.9	26											
CAL95-10BM			10	60	25	3.9	26											
CAL95-12BM	95	13.4	12	60	25	3.9	26	27	25	HN1 HN2	K10/3	K25, K26, K27	K28	K06, K06C, B035	HT131LN-C, HT131-C, HT131-JC, RHU31, RHU31-C, B131-C, B131LN-C, B135-C, CW0-5108	ECW-H3D (to 630mm ²), RHU520	14.2	1
CAL95-16BM			16	64	28	3.4	30											
CAL120-10BM	120	15.6	10	64	29	5.0	26	30	25	HN1 HN2	K10/3	K25, K26, K27	K28	K06, K06C, B035	HT131LN-C, HT131-C, HT131-JC, RHU31, RHU31-C, B131-C, B131LN-C, B135-C, CW0-5108	ECW-H3D (to 630mm ²), RHU520	16.5	1
CAL120-12BM			12	64	29	5.0	26											
CAL120-16BM			16	68	29	5.0	30											
CAL150-10BM	150	16.7	10	71	32	5.5	32	30	20	HN1 HN2	K10/3	K25, K26, K27	K28	K06, K06C, B035	HT131LN-C, HT131-C, HT131-JC, RHU31, RHU31-C, B131-C, B131LN-C, B135-C, CW0-5108	ECW-H3D (to 630mm ²), RHU520	18.3	1
CAL150-12BM			12	80	32	5.5	41											
CAL150-16BM			16	80	32	5.5	41											
CAL185-10BM	185	18.4	10	74	35	5.7	32	32	20	HN1 HN2	K10/3	K25, K26, K27	K28	K06, K06C, B035	HT131LN-C, HT131-C, HT131-JC, RHU31, RHU31-C, B131-C, B131LN-C, B135-C, CW0-5108	ECW-H3D (to 630mm ²), RHU520	20.0	1
CAL185-12BM			12	83	35	5.7	41											
CAL185-16BM			16	83	35	5.7	41											
CAL240-12BM	240	21.2	12	92	40	7.1	42	38	1	HN1 HN2	K10/3	K25, K26, K27	K28	K06, K06C, B035	HT131LN-C, HT131-C, HT131-JC, RHU31, RHU31-C, B131-C, B131LN-C, B135-C, CW0-5108	ECW-H3D (to 630mm ²), RHU520	23.1	3
CAL240BM			92	40	7.1	42												
CAL300BM	300	23.5		101	45	7.8	46	42	1	HN1 HN2	K10/3	K25, K26, K27	K28	K06, K06C, B035	HT131LN-C, HT131-C, HT131-JC, RHU31, RHU31-C, B131-C, B131LN-C, B135-C, CW0-5108	ECW-H3D (to 630mm ²), RHU520	26.0	3
CAL500BM	500	30.0		124	56	8.5	56	48	1	HN1 HN2	K10/3	K25, K26, K27	K28	K06, K06C, B035	HT131LN-C, HT131-C, HT131-JC, RHU31, RHU31-C, B131-C, B131LN-C, B135-C, CW0-5108	ECW-H3D (to 630mm ²), RHU520	31.1	3

Note: Fine stranded cables need higher crimping forces so tools have to be de-rated from normal accepted crimping capacity.