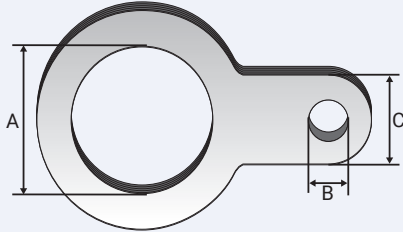




# ACCESSORIES

## Slip-On Earth Tag

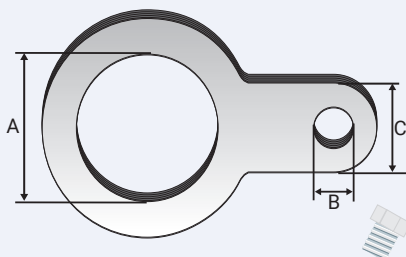
NICKEL PLATED BRASS OR STAINLESS STEEL 316/316L



Product Code	Size Ref.	Dimension 'A'	Dimension 'B'	Dimension 'C'	Square Section	Short Circuit Fault Current Ratings BS6121 Part 5: 1993	
6220-1	0/1	M20	7mm	12mm x 1.5mm	18mm <sup>2</sup>	20mm	3.06KA / 1 second
622902	2	M25	7mm	12mm x 1.5mm	18mm <sup>2</sup>	25mm	4.00KA / 1 second
622903	3	M32	12mm	22mm x 1.5mm	33mm <sup>2</sup>	32mm	5.40KA / 1 second
622904	4	M40	12mm	32mm x 1.5mm	48mm <sup>2</sup>	40mm	7.20KA / 1 second
622905	5	M50	12mm	40mm x 1.5mm	60mm <sup>2</sup>	50mm	10.40KA / 1 second
622906	6	M63	12mm	40mm x 1.5mm	60mm <sup>2</sup>	63mm	10.40KA / 1 second
622907	7	M75	12mm	40mm x 1.5mm	60mm <sup>2</sup>	75mm	10.40KA / 1 second
622908	8	M80	12mm	40mm x 1.5mm	60mm <sup>2</sup>	-	-
622909	9	M90	12mm	40mm x 1.5mm	60mm <sup>2</sup>	-	-

All dimensions are in mm.

## Screw-On Earth Tag



Product Code	Size Ref.	Dimension 'A'	Dimension 'B'	Dimension 'C'	Square Section	Short Circuit Fault Current Ratings BS6121 Part 5: 1993	
6030-1	0/1	M20	M6	10mm x 3mm	30mm <sup>2</sup>	20mm	26KA / 1 second
603202	2	M25	M6	10mm x 4mm	40mm <sup>2</sup>	25mm	26KA / 1 second
603203	3	M32	M6	12mm x 6mm	70mm <sup>2</sup>	32mm	26KA / 1 second
603204	4	M40	M8	20mm x 6mm	120mm <sup>2</sup>	40mm	26KA / 1 second
603205	5	M50	M10	24mm x 8mm	185mm <sup>2</sup>	50mm	43KA / 1 second
603206	6	M63	M12	40mm x 8mm	300mm <sup>2</sup>	63mm	43KA / 1 second
603207	7	M75	M12	40mm x 8mm	300mm <sup>2</sup>	75mm	43KA / 1 second
603208	8	M80	M12	40mm x 8mm	300mm <sup>2</sup>	-	-
603209	9	M90	M12	40mm x 8mm	300mm <sup>2</sup>	-	-

All dimensions are in mm.

## Sealing Gasket Metric

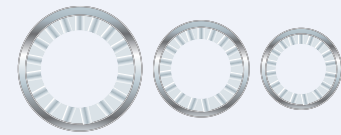


Product Code	Metric Size	Thickness 'A'
805520	M20	2.0
805525	M25	2.0
805532	M32	2.0
805540	M40	2.0
805550	M50	2.0
805563	M63	2.0
805575	M75	2.0
805580	M80	2.0
805590	M90	2.0

All dimensions are in mm.

## Serrated Washer

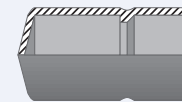
STAINLESS STEEL 316/316L



Product Code	Metric Size
805620	M20
805625	M25
805632	M32
805640	M40
805650	M50
805663	M63
805675	M75
805680	M80
805690	M90

All dimensions are in mm.

## Insulation Sleeve



Product Code	Size Reference
550502	2

All dimensions are in mm.

## Terminal Connector



Product Code	Size Ref.	Hole Diameter	Allen Key No.
580302	2	10mm	4mm

All dimensions are in mm.