

240 V 50 Hz – EC low loss ballasts (EEI=B2)

| Lamp | | | | Ballast | | Electrical | | | | | | | | Thermal | Physical | | | | |
|---------------------------|---------|---------|--------|---------|----------------|------------|-------------|--------------|--------------------|-------------|--------------|--------------------|-----------|-----------------|----------|--------|--------|-------------|--------|
| wattage | voltage | current | length | type | article number | loss hot | input power | lamp current | lamp start current | circuit P F | line current | line start current | capacitor | normal/abnormal | stack | figure | length | mtg centres | weight |
| W | V | mA | mm | | | W | W | mA | mA | cos φ | mA@0.9PF | mA@0.9PF | μF@0.9PF | Δt | mm | | mm | mm | kg |
| Linear and circular lamps | | | | | | | | | | | | | | | | | | | |
| 4 | 29 | 170 | 150 | EC4/6/8 | 89000114 | 5.5 | 10.0 | 165 | 170 | 0.25 | 46 | 50 | 2.0 | 60/95 | 27 | 2 | 84.5 | 76.0 | 0.33 |
| 6 | 42 | 160 | 225 | EC4/6/8 | 89000114 | EEI=B2 | 11.2 | 155 | 170 | 0.30 | 52 | 60 | 2.0 | 60/95 | 27 | 2 | 84.5 | 76.0 | 0.33 |
| 2x6 | 42 | 160 | 225 | EC13 | 89000037 | 4.4 | 16.4 | 160 | 215 | 0.43 | 76 | 107 | 1.5 | 55/105 | 27 | 2 | 84.5 | 76.0 | 0.33 |
| 8 | 56 | 145 | 300 | EC4/6/8 | 89000114 | EEI=B2 | 11.9 | 145 | 170 | 0.34 | 55 | 68 | 1.5 | 60/95 | 27 | 2 | 84.5 | 76.0 | 0.33 |
| 2x8 | 56 | 145 | 300 | EC13 | 89000037 | 4.0 | 18.2 | 145 | 215 | 0.52 | 84 | 131 | 1.5 | 55/105 | 27 | 2 | 84.5 | 76.0 | 0.33 |
| 13 | 95 | 165 | 525 | EC13 | 89000037 | EEI=B2 | 17.5 | 165 | 215 | 0.44 | 81 | 111 | 1.5 | 55/105 | 27 | 2 | 84.5 | 76.0 | 0.33 |
| 15 | 55 | 310 | 450 | EC15 | 89002928 | EEI=B2 | 23.7 | 310 | 360 | 0.32 | 110 | 134 | 3.5 | 55/80 | 50 | 1 | 150.0 | 135.5 | 0.55 |
| 18 | 57 | 370 | 600 | EC18/20 | 89002929 | EEI=B2 | 26.9 | 370 | 425 | 0.30 | 125 | 150 | 4.0 | 55/85 | 50 | 1 | 150.0 | 135.5 | 0.55 |
| 2x18 | 57 | 370 | 600 | EC36/40 | 89002931 | 6.5 | 42.5 | 370 | 560 | 0.48 | 197 | 313 | 3.5 | 45/130 | 54 | 1 | 150.0 | 135.5 | 0.60 |
| 20 | 57 | 370 | 600 | EC18/20 | 89002929 | 8.9 | 28.2 | 370 | 425 | 0.32 | 131 | 157 | 4.0 | 55/85 | 50 | 1 | 150.0 | 135.5 | 0.55 |
| 2x20 | 57 | 370 | 600 | EC36/40 | 89002931 | 6.5 | 45.1 | 370 | 560 | 0.51 | 209 | 332 | 3.0 | 45/130 | 54 | 1 | 150.0 | 135.5 | 0.60 |
| 22 | 62 | 400 | ø210 | EC22 | | EEI=B2 | 31.5 | 400 | 475 | 0.33 | 146 | 182 | 5.0 | 55/100 | 50 | 1 | 150.0 | 135.5 | 0.55 |
| 30 | 96 | 365 | 900 | EC30 | 89002930 | EEI=B2 | 39.5 | 360 | 475 | 0.46 | 183 | 253 | 3.5 | 55/100 | 50 | 1 | 150.0 | 135.5 | 0.55 |
| 32 | 81 | 450 | ø305 | EC32 | | EEI=B2 | 41.5 | 430 | 520 | 0.40 | 192 | 244 | 5.0 | 55/125 | 50 | 1 | 150.0 | 135.5 | 0.55 |
| 36 | 103 | 430 | 1,200 | EC36/40 | 89002931 | EEI=B2 | 44.8 | 415 | 625 | 0.45 | 207 | 328 | 4.0 | 55/150 | 54 | 1 | 150.0 | 135.5 | 0.60 |
| 40 | 103 | 430 | 1,200 | EC36/40 | 89002931 | 8.8 | 48.3 | 415 | 625 | 0.48 | 224 | 354 | 3.5 | 55/150 | 54 | 1 | 150.0 | 135.5 | 0.60 |
| 58 | 110 | 670 | 1,500 | EC58/65 | 89002932 | EEI=B2 | 68.4 | 660 | 940 | 0.43 | 317 | 474 | 7.0 | 50/135 | 90 | 1 | 195.0 | 180.0 | 1.00 |
| 65 | 110 | 670 | 1,500 | EC58/65 | 89002932 | 10.4 | 74.4 | 660 | 940 | 0.47 | 344 | 515 | 6.0 | 50/135 | 90 | 1 | 195.0 | 180.0 | 1.00 |
| Compact lamps | | | | | | | | | | | | | | | | | | | |
| 5 | 35 | 180 | TC-S | EC9 | 89000128 | 5.7 | 11.1 | 180 | 187 | 0.26 | 51 | 56 | 2.0 | 60/75 | 27 | 2 | 84.5 | 76.0 | 0.33 |
| 2x5 | 35 | 180 | TC-S | EC13 | 89000037 | 4.8 | 15.6 | 175 | 215 | 0.37 | 72 | 93 | 2.0 | 55/105 | 27 | 2 | 84.5 | 76.0 | 0.33 |
| 7 | 47 | 175 | TC-S | EC9 | 89000128 | EEI=B2 | 12.6 | 175 | 187 | 0.30 | 58 | 65 | 2.0 | 60/75 | 27 | 2 | 84.5 | 76.0 | 0.33 |
| 2x7 | 47 | 175 | TC-S | EC13 | 89000037 | 4.5 | 18.7 | 165 | 215 | 0.47 | 87 | 118 | 1.5 | 55/105 | 27 | 2 | 84.5 | 76.0 | 0.33 |
| 9 | 60 | 170 | TC-S | EC9 | 89000128 | EEI=B2 | 13.9 | 165 | 187 | 0.35 | 64 | 77 | 2.0 | 60/75 | 27 | 2 | 84.5 | 76.0 | 0.33 |
| 2x9 | 60 | 170 | TC-S | EC13 | 89000037 | 4.2 | 22.0 | 155 | 215 | 0.59 | 102 | 149 | 1.5 | 55/105 | 27 | 2 | 84.5 | 76.0 | 0.33 |
| 10 | 64 | 190 | TC-D | EC13 | 89000037 | 5.0 | 15.0 | 185 | 215 | 0.34 | 70 | 85 | 2.0 | 55/105 | 27 | 2 | 84.5 | 76.0 | 0.33 |
| 10 | 72 | 180 | TC-DD | EC13 | 89000037 | 4.8 | 15.3 | 175 | 215 | 0.36 | 71 | 91 | 2.0 | 55/105 | 27 | 2 | 84.5 | 76.0 | 0.33 |
| 11 | 91 | 155 | TC-S | EC9 | 89000128 | EEI=B2 | 16.7 | 155 | 187 | 0.45 | 77 | 98 | 1.5 | 60/75 | 27 | 2 | 84.5 | 76.0 | 0.33 |
| 13 | 91 | 175 | TC-D | EC13 | 89000037 | EEI=B2 | 17.6 | 170 | 215 | 0.43 | 82 | 108 | 2.0 | 55/105 | 27 | 2 | 84.5 | 76.0 | 0.33 |
| 13 | 91 | 175 | TC-T | EC13 | 89000037 | EEI=B2 | 17.6 | 170 | 215 | 0.43 | 82 | 108 | 2.0 | 55/105 | 27 | 2 | 84.5 | 76.0 | 0.33 |
| 16 | 103 | 195 | TC-DD | EC16 | 89000076 | EEI=B2 | 21.5 | 195 | 250 | 0.46 | 100 | 134 | 2.0 | 60/115 | 27 | 2 | 84.5 | 76.0 | 0.33 |
| 18 | 100 | 220 | TC-D | EC18H | 89000095 | EEI=B2 | 24.5 | 220 | 280 | 0.46 | 113 | 152 | 2.0 | 65/120 | 27 | 2 | 84.5 | 76.0 | 0.33 |
| 18 | 58 | 375 | TC-F | EC18/20 | 89002929 | EEI=B2 | 26.9 | 370 | 425 | 0.30 | 125 | 150 | 4.0 | 55/85 | 50 | 1 | 150.0 | 135.5 | 0.55 |
| 18 | 58 | 375 | TC-L | EC18/20 | 89002929 | EEI=B2 | 26.9 | 370 | 425 | 0.30 | 125 | 150 | 4.0 | 55/85 | 50 | 1 | 150.0 | 135.5 | 0.55 |
| 18 | 100 | 225 | TC-T | EC18H | 89000095 | EEI=B2 | 24.5 | 220 | 280 | 0.46 | 113 | 152 | 2.0 | 65/120 | 27 | 2 | 84.5 | 76.0 | 0.33 |
| 2x18 | 58 | 375 | TC-L | EC36/40 | 89002931 | 6.5 | 42.5 | 370 | 560 | 0.48 | 197 | 313 | 3.5 | 45/130 | 54 | 1 | 150.0 | 135.5 | 0.60 |
| 21 | 101 | 270 | TC-DD | EC21 | 89000259 | EEI=B2 | 26.8 | 270 | 340 | 0.41 | 124 | 164 | 3.0 | 40/80 | 50 | 1 | 150.0 | 135.5 | 0.60 |
| 24 | 87 | 345 | TC-F | EC18/20 | 89002929 | EEI=B2 | 32.0 | 345 | 425 | 0.39 | 148 | 191 | 3.5 | 55/85 | 50 | 1 | 150.0 | 135.5 | 0.55 |
| 24 | 87 | 345 | TC-L | EC18/20 | 89002929 | EEI=B2 | 32.0 | 345 | 425 | 0.39 | 148 | 191 | 3.5 | 55/85 | 50 | 1 | 150.0 | 135.5 | 0.55 |
| 26 | 105 | 325 | TC-D | EC18/20 | 89002929 | EEI=B2 | 32.8 | 315 | 425 | 0.43 | 152 | 215 | 3.0 | 55/85 | 50 | 1 | 150.0 | 135.5 | 0.55 |
| 26 | 105 | 325 | TC-T | EC18/20 | 89002929 | EEI=B2 | 33.3 | 315 | 425 | 0.44 | 154 | 219 | 3.0 | 55/85 | 50 | 1 | 150.0 | 135.5 | 0.55 |
| 28 | 108 | 320 | TC-DD | EC18/20 | 89002929 | EEI=B2 | 35.2 | 315 | 410 | 0.47 | 163 | 223 | 3.0 | 55/85 | 50 | 1 | 150.0 | 135.5 | 0.55 |
| 36 | 106 | 435 | TC-F | EC36/40 | 89002931 | EEI=B2 | 44.8 | 415 | 625 | 0.45 | 207 | 328 | 4.0 | 55/150 | 54 | 1 | 150.0 | 135.5 | 0.60 |
| 36 | 106 | 435 | TC-L | EC36/40 | 89002931 | EEI=B2 | 44.8 | 415 | 625 | 0.45 | 207 | 328 | 4.0 | 55/150 | 54 | 1 | 150.0 | 135.5 | 0.60 |
| 38 | 110 | 430 | TC-DD | EC36/40 | 89002931 | EEI=B2 | 47.3 | 415 | 625 | 0.47 | 219 | 346 | 4.0 | 55/150 | 54 | 1 | 150.0 | 135.5 | 0.60 |

Notes

Other wattages available on request.
 Refer to Energy Classification System table for ballasts from CELMA and/or MEPS.
 Some ballast and lamp combination may not operate within the EEI=B2 rating.

EC energy control ballasts



Figure 1
50, 54 and (90 mm) stack

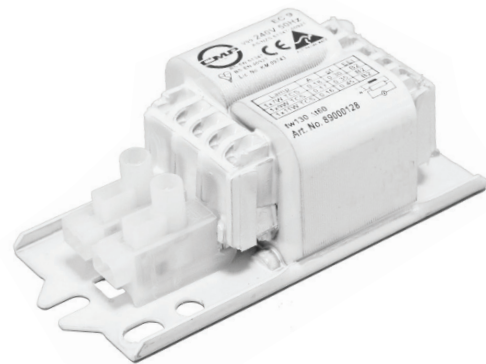
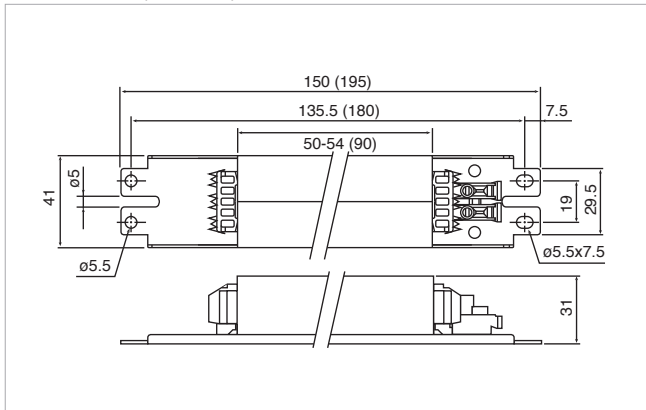
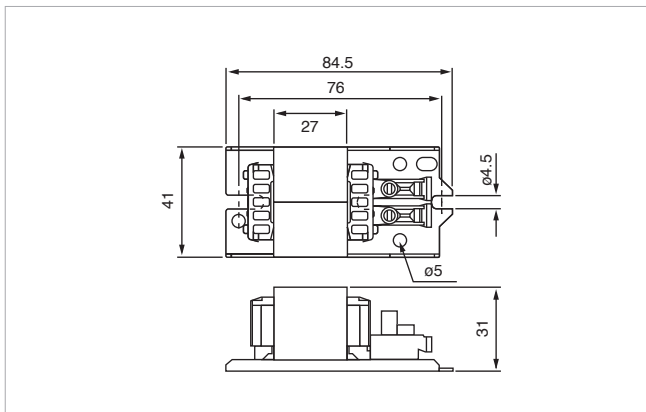


Figure 2
27 mm stack



- slim cross-section and compact
- low magnetic stray field
- varnish impregnation
- long service life
- non-audible noise level
- nomex class "H" gap for fixed calibration
- resistant to moisture and condensation
- 10 A push-in terminals (screw terminals on request)
- low power consumption
- maximum winding temperature $t_w 130^\circ\text{C}$
- other supply voltages than listed are available i.e. 120 V, 277 V etc.

100% final testing

- continuity
- winding short circuit
- core to coil high voltage test
- operating values